



Price

£550,000

Freehold

5x  3x  2x 

**Broke Wood Way,
Maidstone, Kent ME16**

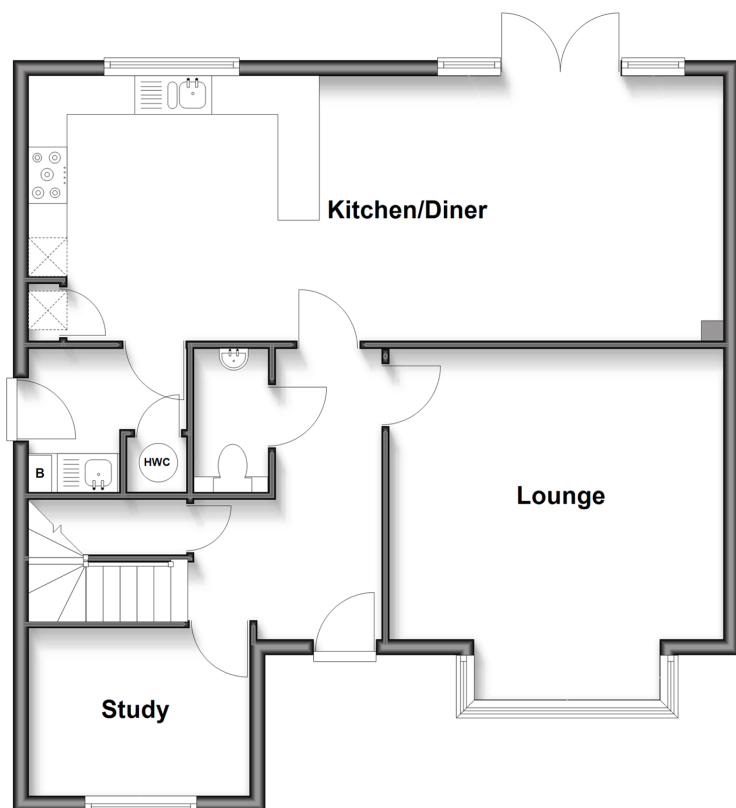
OVER 60?

Secure this property
for up to **59% less!**

Wards
Helping you move forwards

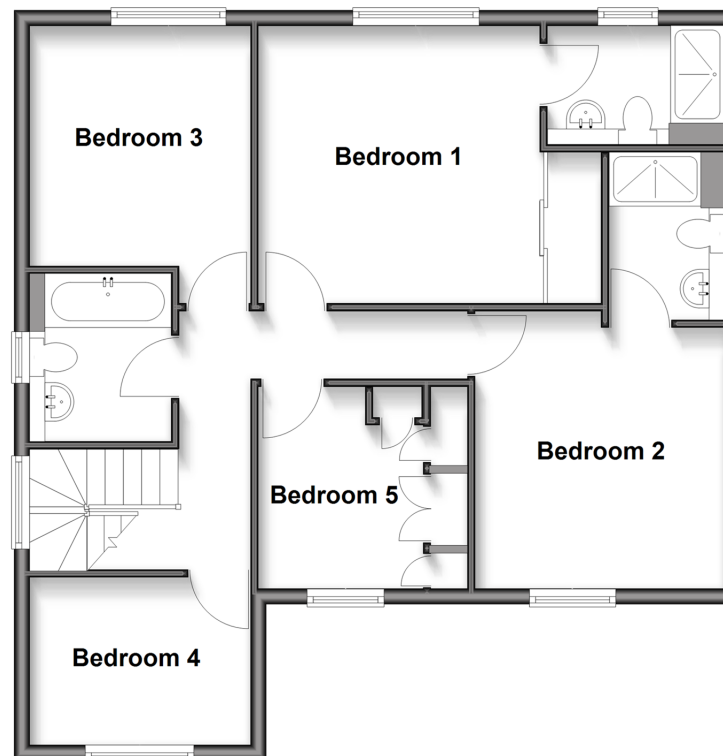
Ground Floor

Approx. 73.4 sq. metres (790.0 sq. feet)



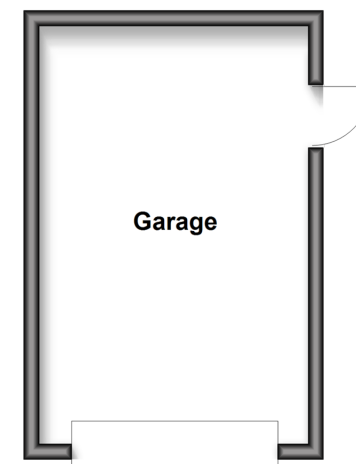
First Floor

Approx. 72.2 sq. metres (776.8 sq. feet)



Outbuilding

Approx. 19.0 sq. metres (204.0 sq. feet)



Accommodation

GROUND FLOOR

Entrance Hall
Cloakroom
Study: 9'5 x 7'2 (2.87m x 2.19m)
Lounge: 14'2 x 12'3 (4.32m x 3.74m)
Kitchen/Diner: 29'6 x 11'2 (9.00m x 3.41m)
Utility Room: 6'7 x 6'4 (2.01m x 1.93m)

FIRST FLOOR

Landing
Bedroom 1: 12'0 x 11'8 (3.66m x 3.56m)
En-Suite Shower Room
Bedroom 2: 11'6 x 10'4 (3.51m x 3.15m)
En-Suite Shower Room
Bedroom 3: 10'7 x 9'7 (3.23m x 2.92m)
Bedroom 4: 8'8 x 6'9 (2.64m x 2.06m)
Bedroom 5: 9'6 x 7'1 (2.90m x 2.16m)
Bathroom

OUTBUILDING

Garage: 18'0 x 11'9 (5.49m x 3.58m)

OUTSIDE

Rear Garden
Front Garden
Driveway



Main features

- Substantial family home set within popular development
- En-suite facilities to bedroom 1 and bedroom 2 plus family bathroom
- Double glazed with gas fired central heating
- Open-plan fitted kitchen/diner
- Single garage and tandem driveway for up to 3 vehicles



Nearest Schools

Primary Schools: Barming Primary 0.4 miles, West Borough Primary 0.5 miles, St Francis' Catholic Primary, Maidstone 0.8 miles

Secondary Schools: Bower Grove School 0.5 miles



Transport Information

Train Stations: East Farleigh 0.6 miles, Barming 0.8 miles, Maidstone Barracks 1.5 miles



Address

Broke Wood Way, Maidstone, Kent ME16



Directions

For directions to this property please contact us.



Wards
Helping you move forwards

Call Maidstone Branch 01622 683737 ■ wardsofkent.co.uk



■ Legal advice should be taken to verify fixtures/fittings, planning, alterations and/or lease details ■ Appliances & services are untested, dimensions are approximate and floor plans are not to scale
■ Through a Homewise Home For Life Plan people aged 60+ can secure this property for up to 50% less, by purchasing a Lifetime Lease.



13157157/20251029/CV/DS