



MARTINS ESTATES

SALES AND LETTINGS

Martins Estates Sales And Lettings High Street
Ashford
Kent
TN24 8SF

Tel: 01233610444



6 Ryeland Way, Ashford, TN25 7FU

Asking Price £289,995

A beautifully presented two-bedroom mid-terrace home, finished to a high standard throughout and ideally suited for first-time buyers, professionals, or investors alike.

The property features a modern downstairs cloakroom, a smartly fitted kitchen, and a well-proportioned living area creating a comfortable and practical layout. Upstairs, there are two generous double bedrooms, with the principal bedroom benefiting from a stylish en-suite shower room, along with a contemporary family bathroom.

Externally, the property further benefits from covered parking plus an additional allocated parking space, providing convenient and secure parking options.

Offered in excellent condition throughout, this attractive home is truly ready to move into.

6 Ryeland Way, Ashford, TN25 7FU

kitchen

7'6" x 10'11" (2.29m x 3.34m)

living room

13'11" x 14'1" (4.26m x 4.31m)

bedroom 1

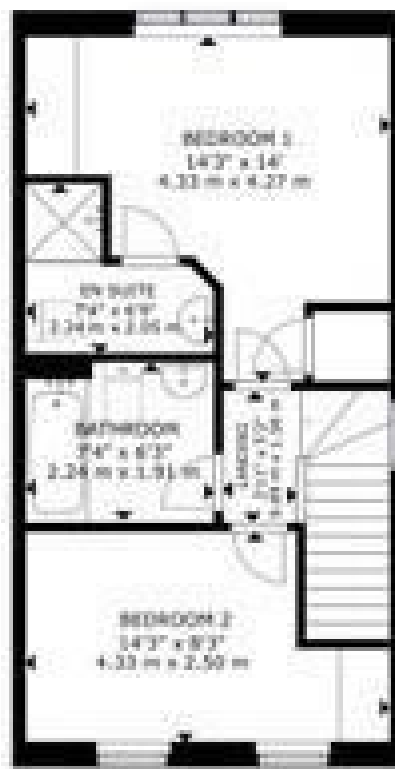
14'2" x 14'0" (4.33m x 4.27m)

bedroom 2

14'2" x 8'2" (4.33m x 2.50m)

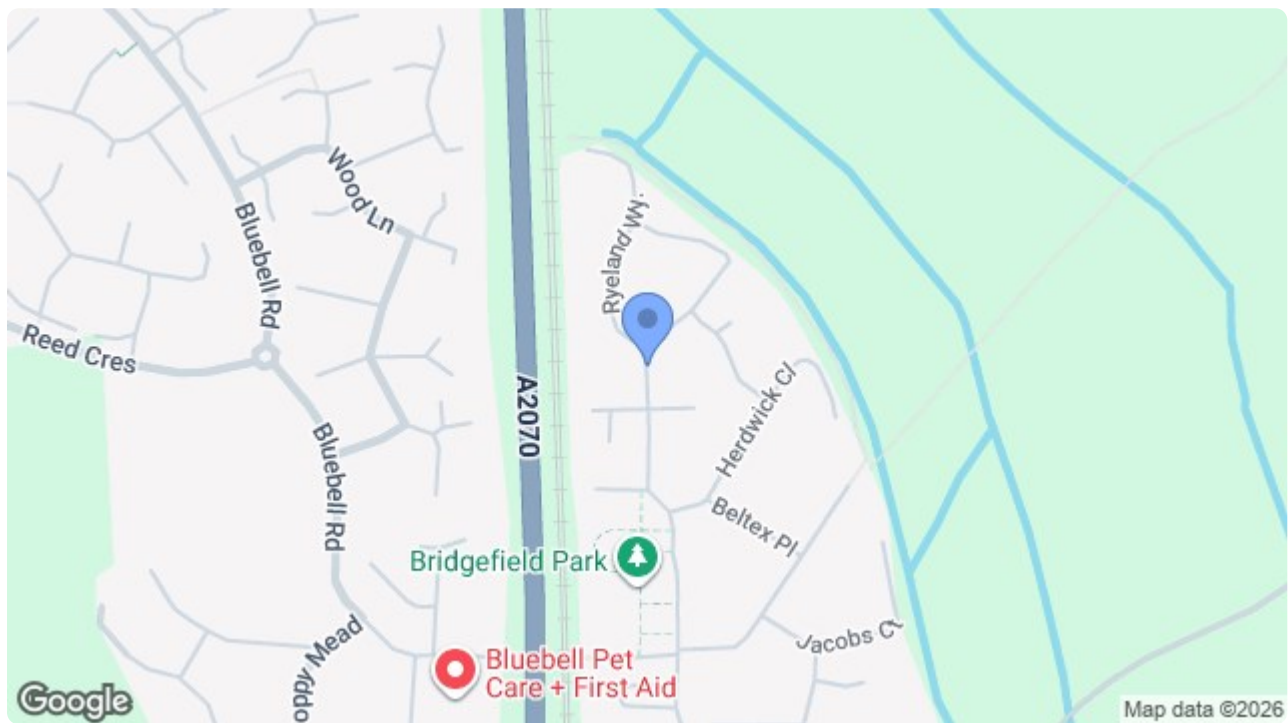


FLOOR 0



FLOOR 1

© Crown Copyright and
Database right. All rights reserved. No part of
this publication may be reproduced without
the prior written permission of Ordnance Survey
under licence from the Controller of Her Majesty's Stationery Office.



Energy Efficiency Rating		Current	Potential
Very energy efficient - lower running costs			
(92 plus) A			95
(81-91) B		82	
(69-80) C			
(55-68) D			
(39-54) E			
(21-38) F			
(1-20) G			
Not energy efficient - higher running costs			
England & Wales		EU Directive 2002/91/EC	

Environmental Impact (CO ₂) Rating		Current	Potential
Very environmentally friendly - lower CO ₂ emissions			
(92 plus) A			
(81-91) B			
(69-80) C			
(55-68) D			
(39-54) E			
(21-38) F			
(1-20) G			
Not environmentally friendly - higher CO ₂ emissions			
England & Wales		EU Directive 2002/91/EC	

69 HIGH STREET, ASHFORD, KENT TN24 8SF

Tel: 01233 610444

www.martins Estates.co.uk

email: sales@martins Estates.co.uk



Martine Estates Property Management Ltd
Registered in England and Wales No. 10031401
Registered office: 69 High Street, Ashford, Kent, TN24 8SF
Martins Wilkins T/A Martins Estates Sales and Lettings