



Alyth Gardens, NW11

£5,350 Per calendar month

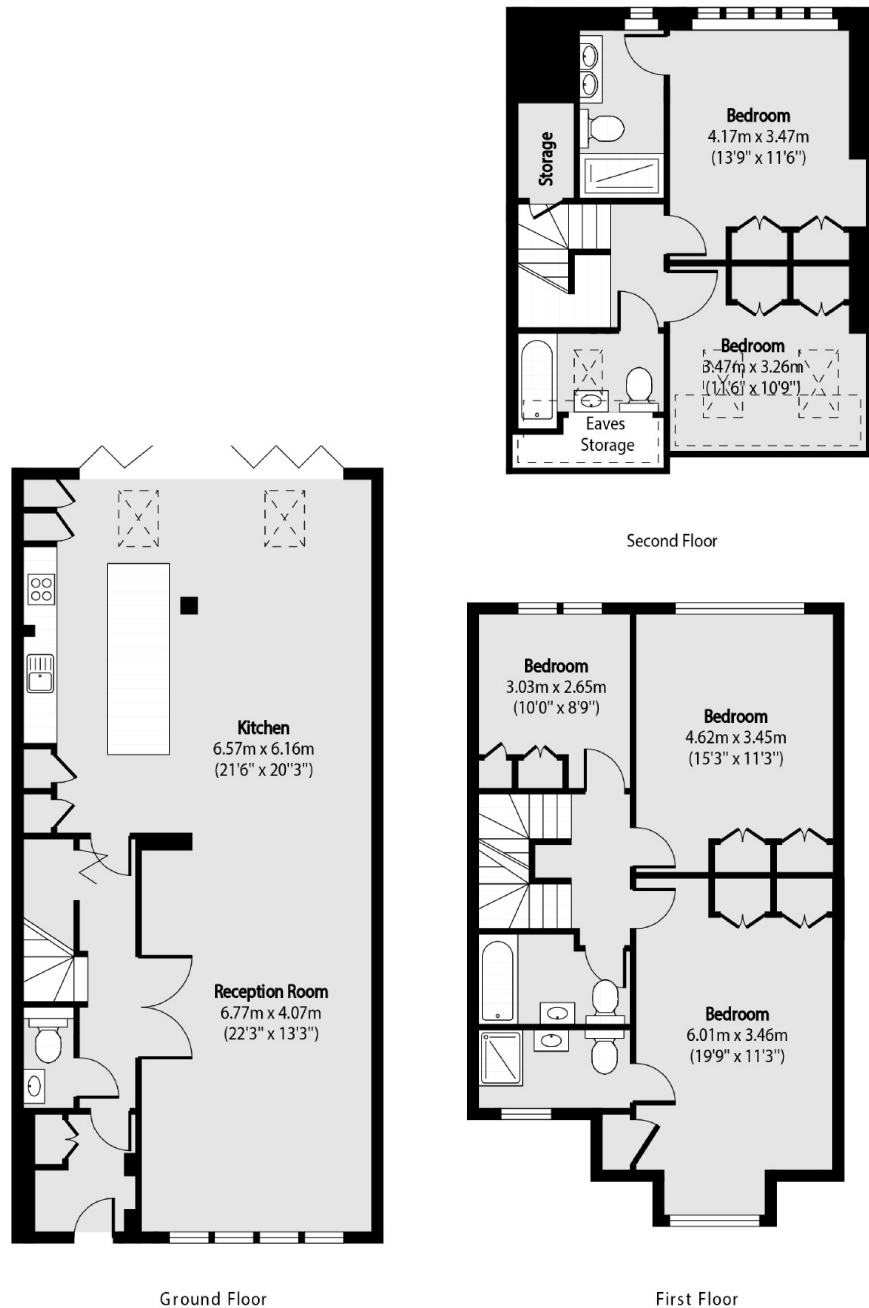
An impressive five bedroom, four bathroom terrace house set over three floors. The property has wooden floors throughout, a private garden, open plan kitchen and built in storage.

Located on a quiet residential street in Golders Green under half a mile to Golders Green Station and an array of shops, cafes and restaurants.

Features

Terrace House
Five Bedrooms
Four Bathrooms
Private Garden
Wood Floors Throughout
Recently Refurbished

Alyth Gardens, London, NW11



Total area (approx): 186.82 sq m (2011 sq. ft)