



## HIDE PLACE, SW1P

£850,000

Underground parking

Roof terrace

Penthouse

Long lease

Natural light

Energy rating c

@marshandparsons  
marshandparsons.co.uk

MARSH &  
PARSONS



# ABOUT THE PROPERTY

A truly exceptional three-bedroom penthouse apartment situated within The Regency, an exclusive and discreet development in the heart of Westminster. This elegant residence combines sophisticated contemporary design with timeless architecture, offering an impressive sense of space, light, and luxury throughout.

The Regency is located in Hide Place, a tranquil location behind Vincent Square. The development is extremely convenient for access to many of the renowned local landmarks which include the Houses of Parliament, Westminster Abbey, Tate Britain and the River Thames.



# STEP INSIDE HIDE PLACE

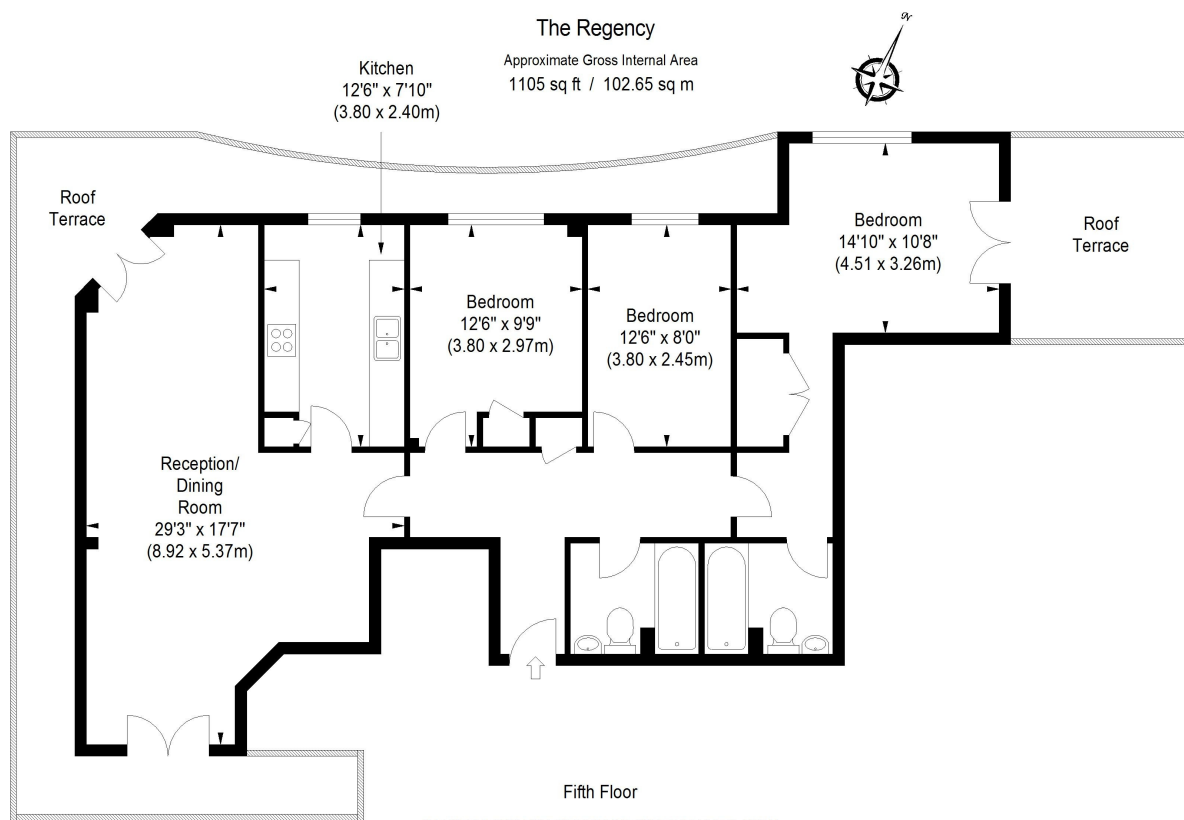


ILLUSTRATION FOR IDENTIFICATION PURPOSES ONLY

ALL MEASUREMENTS ARE MAXIMUM, AND INCLUDE WINDOW BAYS AND WARDROBES WHERE APPLICABLE  
THIS PLAN MUST NOT BE REPRODUCED BY ANY OTHER PERSON WITHOUT PERMISSION

**Pimlico & Westminster**  
020 7590 0800

Energy Rating: C We aim to make our particulars both accurate and reliable. However, they are not guaranteed; nor do they form part of an offer or contract. If you require clarification on any points then please contact us, especially if you're traveling some distance to view. Please note that appliances and heating systems have not been tested and therefore no warranties can be given as to their good working order

**MARSH &  
PARSONS**