



Denmark Hill | London | SE5

Leasehold

£400,000

- Two double bedrooms
- Private balcony
- Open plan
- Lots of natural light
- Chain free
- Local amenities
- Denmark Hill Station
- Excellent bus routes
- Ruskin Park
- Kings College Hospital



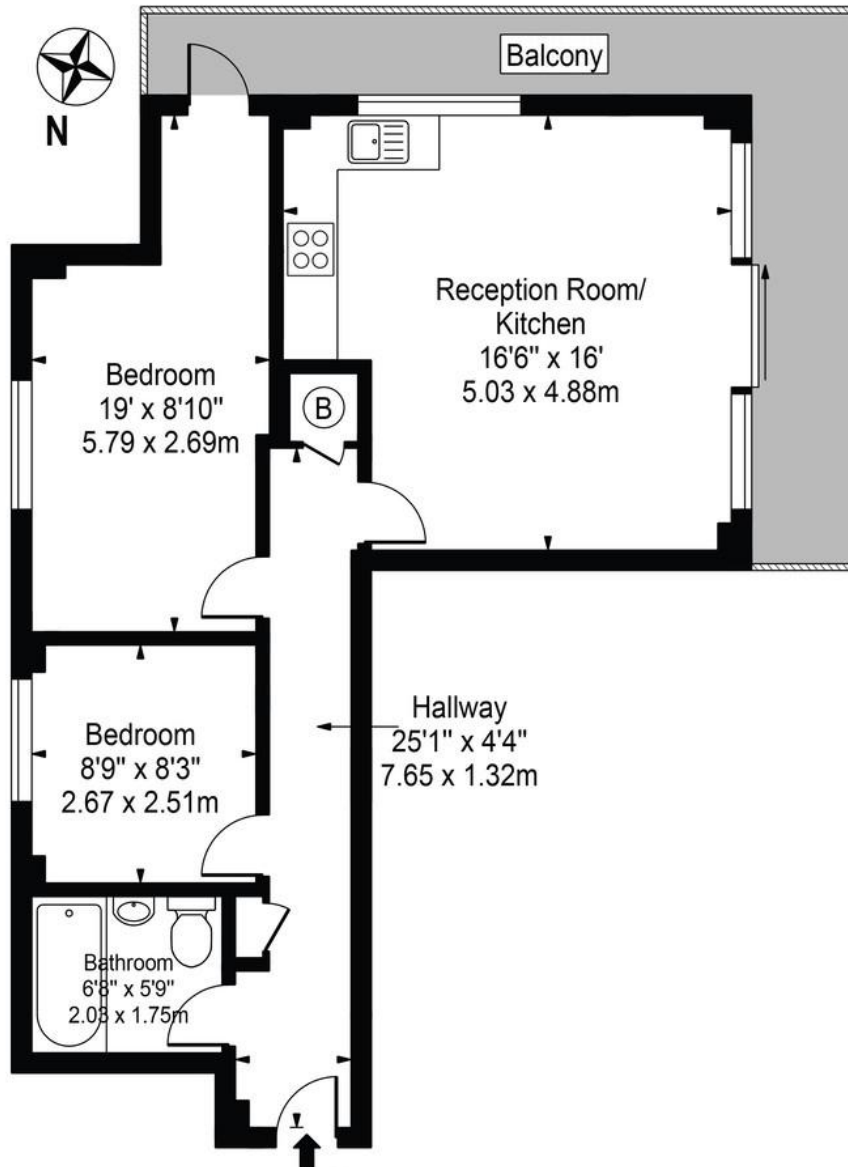
Stylish two bedroom apartment on the second floor of a modern block. Located two minutes from Denmark Hill Station. Directly opposite Ruskin park with a large balcony overlooking the Park. The flat has neutral decoration through out. Modern bathroom suite and plenty of storage make this the perfect flat for someone wanting to put their stamp on a property in a great location. Excellent transport links to the City & West End, walking distance to bars and nightlife of Brixton and Peckham, directly opposite Ruskin Park.



Score	Energy rating	Current	Potential
92+	A		
81-91	B		84 B
69-80	C	77 C	
55-68	D		
39-54	E		
21-38	F		
1-20	G		

Denmark Hill, SE5 8EN

Approx. Gross Internal Area 611 Sq Ft - 56.76 Sq M



Second Floor

For Illustration Purposes Only - Not To Scale

This floor plan should be used as a general outline for guidance only and does not constitute in whole or in part an offer or contract. Any intending purchaser or lessee should satisfy themselves by inspection, searches, enquiries and full survey as to the correctness of each statement. Any areas, measurements or distances quoted are approximate and should not be used to value a property or be the basis of any sale or let.

Viewing Arrangements

Strictly by appointment

Contact Details

121 Denmark Hill

London

SE5 8EN

www.urbanvillagehomes.co.uk

sales@urbanvillagehomes.com

020 3519 9121

Agents Note: Whilst every care has been taken to prepare these sales particulars, they are for guidance purposes only. All measurements are approximate and for general guidance purposes only and whilst every care has been taken to ensure their accuracy, they should not be relied upon and potential buyers are advised to recheck the measurements.