



Kirk House Mill Mount
York, YO24 1AG
Guide Price £600,000

We are delighted to offer for sale this exceptional two-bedroom, two-and-a-half-bathroom ground floor apartment, situated within this prestigious and exclusive gated development on Scarcroft Road. Beautifully presented throughout, the apartment offers generously proportioned living accommodation finished to an exceptionally high standard. Ideally positioned close to York's historic city centre and railway station, the property also enjoys convenient access to a range of popular local amenities, including York Racecourse, Bishopthorpe Road, independent shops, and highly regarded schools. Accessed via its own private entrance, the luxurious accommodation comprises an entrance porch, welcoming hallway with built-in storage cupboards, and an impressive 20ft open-plan living kitchen featuring a central island and a range of integrated appliances. There is also a guest WC/cloakroom, a superb principal bedroom with dressing room and a bespoke four-piece en-suite bathroom, together with a second spacious double bedroom, also benefitting from a dressing room and four-piece en-suite. Externally, the development enjoys a private garden/patio area together with well-maintained communal gardens, two designated resident parking spaces, additional visitor parking spaces, and useful storage areas. An accompanied viewing is highly recommended to fully appreciate the quality, space, and setting of this outstanding home.

Entrance Porch

Composite entrance door, window to front, carpet, Oak door to

Hallway

Storage cupboards, power points, Amtico flooring with under floor heating,

WC/Cloaks

Wash hand basin, low level WC, tiled flooring.





Kitchen Area

Modern Shaker style kitchen with Quartz worktops, sink and mixer tap, built-in appliances including eye level oven, hob, fridge and freezer, dishwasher, wine cooler, Amtico flooring.

Living/Dining Area

Double doors to front, window to side, media wall with TV point and power points, Amtico flooring with under floor heating.

Master Bedroom

Windows to rear, radiator, power points, carpet. Dressing room with separate storage cupboard.

En-Suite

Four piece suite comprising walk-in shower enclosure, bath with mixer tap, low level WC, wash hand basin, radiator, tiled flooring.

Bedroom 2

Windows to front, radiator, power points, carpet. Dressing room with separate storage cupboard.

En-Suite

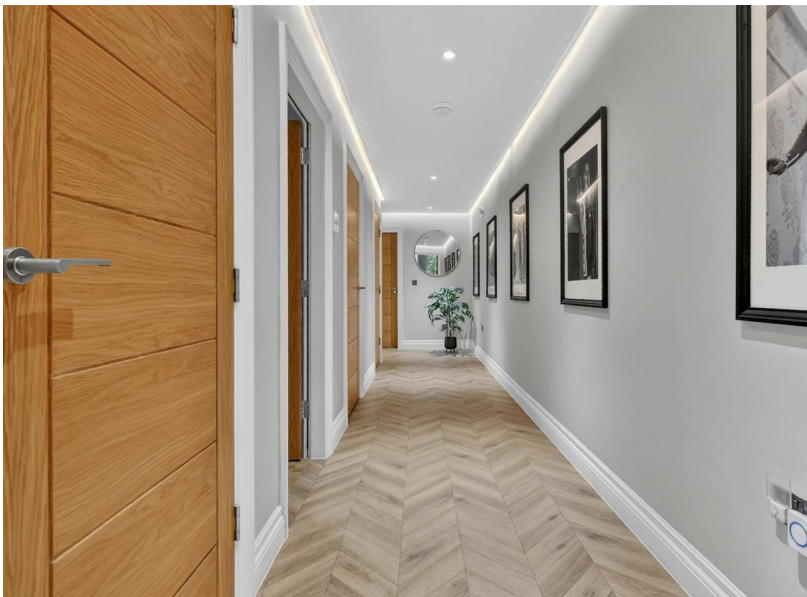
Four piece suite comprising walk-in shower enclosure, bath with mixer tap, low level WC, wash hand basin, radiator, tiled flooring.

Outside

Gated access. Two designated parking spaces plus visitor parking spaces and a private garden/patio area. Communal gardens with useful storage.

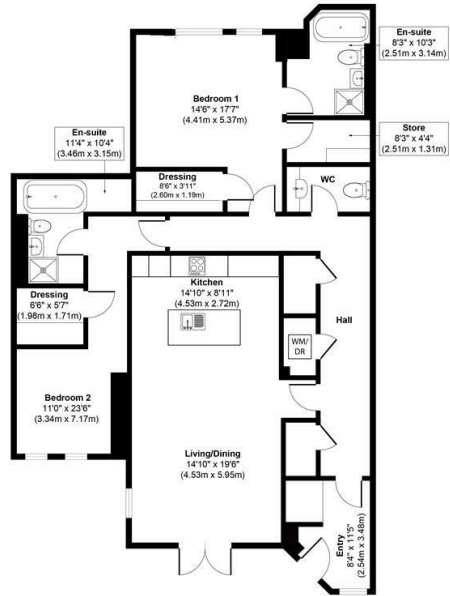
Agents Note:

To be able to purchase a property in the United Kingdom all agents have a legal requirement to conduct Identity checks on all customers involved in the transaction to fulfil their obligations under Anti Money Laundering regulations. A charge to carry out these checks will apply. Please ask our branch for further details.



FLOOR PLAN

Approx. Gross Internal Floor Area 1533 sq. ft / 142.40 sq. m

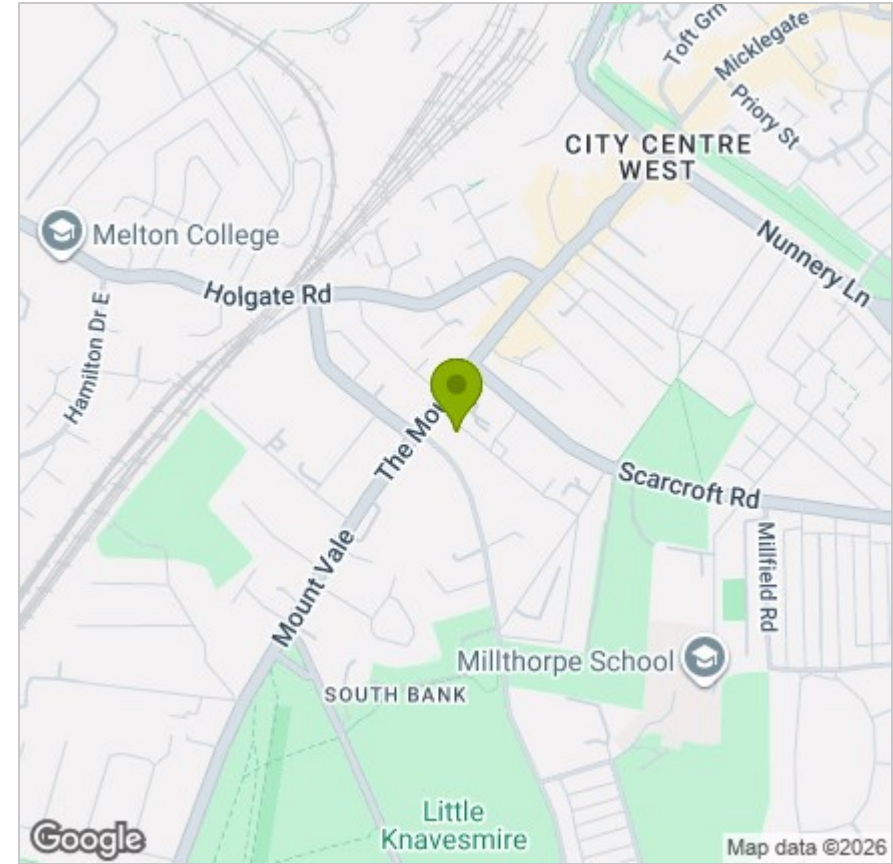


Approximate Floor Area
1533 sq. ft
(142.40 sq. m)

Illustration for identification purposes only, measurements approximate, not to scale.
Copyrighted and Produced by MS Property Marketing.



LOCATION



EPC

Energy Efficiency Rating		Current	Potential
Very energy efficient - lower running costs			
(92 plus)	A		
(81-91)	B		
(69-80)	C	75	75
(55-68)	D		
(39-54)	E		
(21-38)	F		
(1-20)	G		
Not energy efficient - higher running costs			
England & Wales		EU Directive 2002/91/EC	

These particulars, whilst believed to be accurate are set out as a general outline only for guidance and do not constitute any part of an offer or contract. Intending purchasers should not rely on them as statements of representation of fact, but must satisfy themselves by inspection or otherwise as to their accuracy. No person in this firm's employment has the authority to make or give any representation or warranty in respect of the property.