



**FORTUNE & COATES**

The People's Estate Agent



## Corfton Tye Green Village, Harlow, CM18 6QZ

**£799,999**

Fortune and Coates are delighted to present this well-presented three-bedroom detached family home, located within Tye Green Village, Harlow. Homes in this location are rarely available, making this a fantastic opportunity to purchase within this quiet and desirable setting.

Upon entering, you are welcomed by a spacious entrance hallway with stairs rising to the first floor and access to a convenient ground floor W/C.

The living room is a beautifully presented and generous space, with large windows flooding the room with natural light, complemented by a feature fireplace creating a warm and inviting atmosphere.

The kitchen is stylish and contemporary, fitted with a range of modern wall and base units with marble-effect worktops and splash back. A central island provides

Living room 16'6" x 12'5" (5.04 x 3.81)

Kitchen 13'10" x 20'10" (4.22 x 6.36)

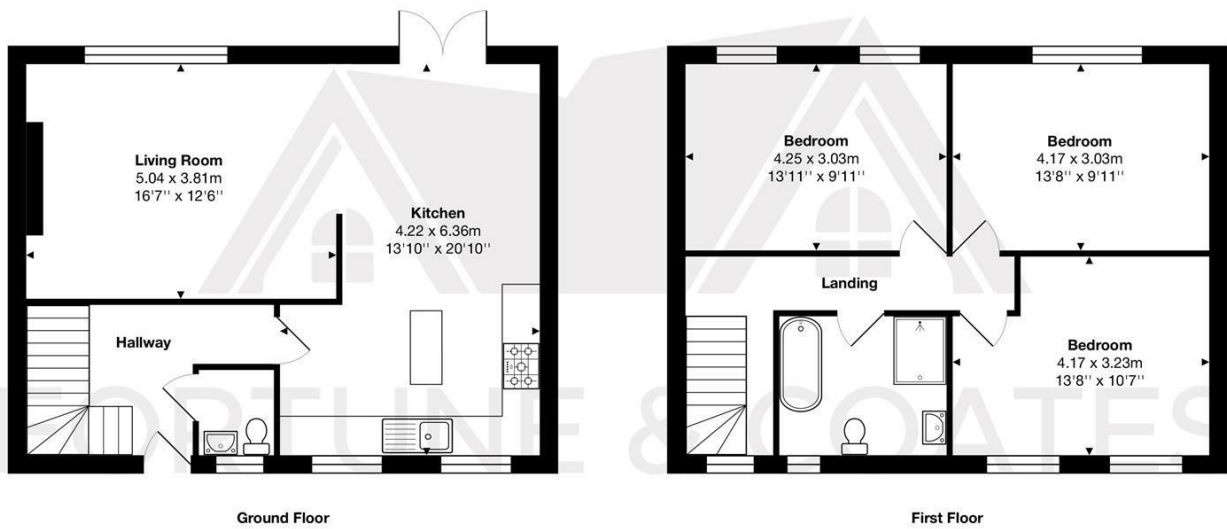
Bedroom 13'11" x 9'11" (4.25 x 3.03)

Bedroom 13'8" x 10'7" (4.17 x 3.23)

Bedroom 13'8" x 9'11" (4.17 x 3.03)

AGENT NOTE: The information provided about this property does not constitute or form part of an offer or contract, nor may it be regarded as representations. All interested parties must verify accuracy and your solicitor must verify tenure/lease information, fixtures & fittings and, where the property has been extended/converted, planning/building regulation consents. All dimensions are approximate and quoted for guidance only as are floor plans which are not to scale, and their accuracy cannot be confirmed. Reference to appliances and/or services does not imply that they are necessarily in working order or fit for the purpose.

## Floor Plan

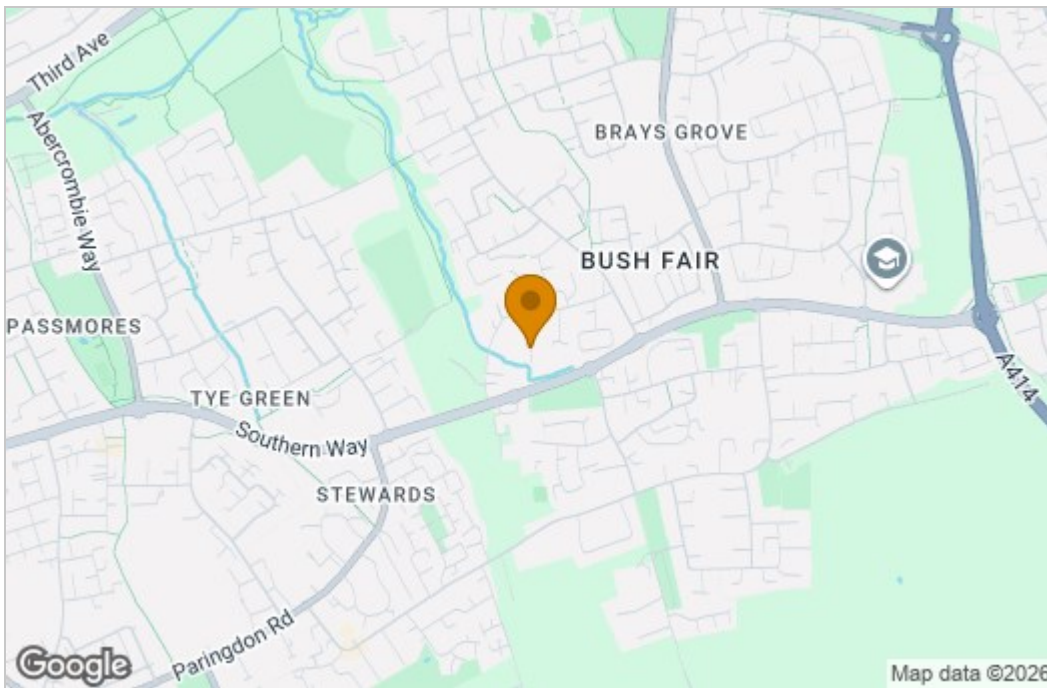


Total Area: approx. 107.3 m<sup>2</sup> ... 1155 ft<sup>2</sup>

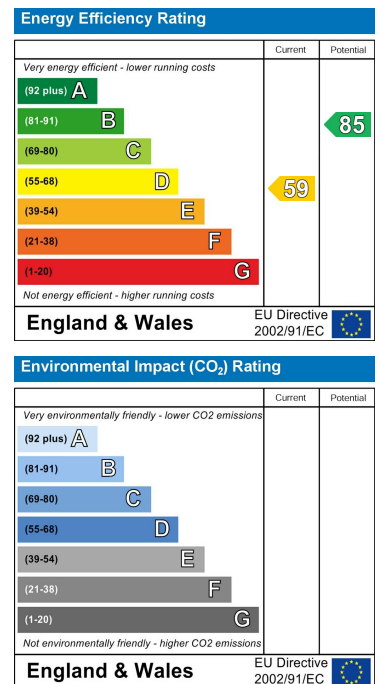
THE FLOORPLAN IS FOR ILLUSTRATIVE PURPOSES ONLY AND IS NOT TO SCALE.  
Measurements and features are approximate and may differ from the actual property. Verify all details independently; no liability is accepted for errors or omissions.

Property marketing provided by www.fotomarketing.co.uk

## Area Map



## Energy Efficiency Graph



These particulars, whilst believed to be accurate are set out as a general outline only for guidance and do not constitute any part of an offer or contract. Intending purchasers should not rely on them as statements of representation of fact, but must satisfy themselves by inspection or otherwise as to their accuracy. No person in this firm's employment has the authority to make or give any representation or warranty in respect of the property.