

abbotFox



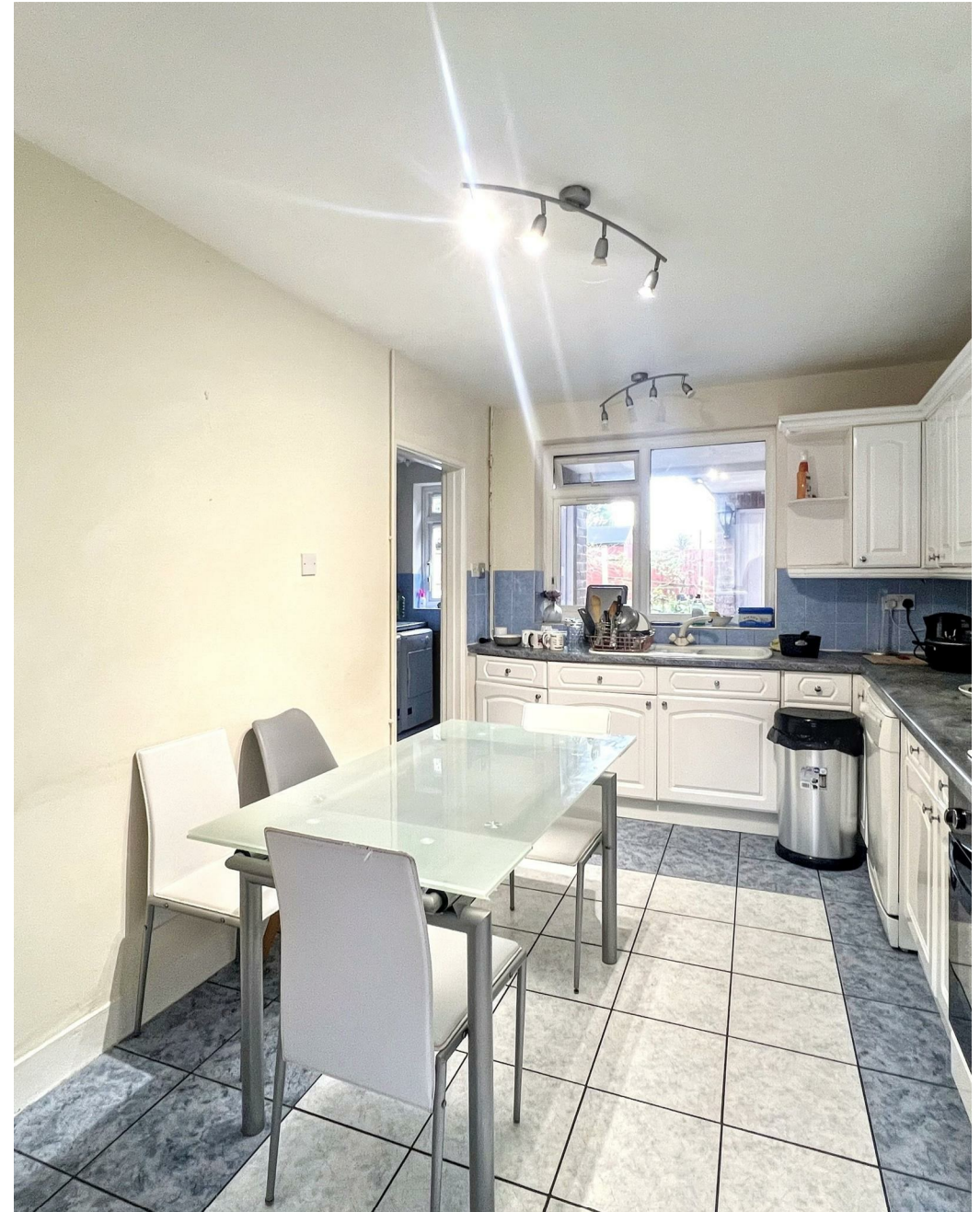


Buckingham Road, Norwich  
*£1,800 PCM*

“

We are a team of genuine individuals who hold a deep passion for both property and marketing. Collectively, we bring over 70 years of experience in the property market of Norfolk and Suffolk. Our affection for both counties runs deep, and we are enthusiastic about sharing our passion with you.

Colin McKenzie | **Branch Partner**













## THE DETAIL\_\_\_\_\_

abbotFox presents this four-bedroom student let available

This spacious and fully refurbished four-bedroom student property offers the perfect combination of comfort, style, and convenience. The property features a large, bright lounge ideal for relaxing or socialising, a modern kitchen-diner with plenty of space for cooking and dining, and a practical utility room.

Accommodation comprises four well-proportioned bedrooms, a contemporary bathroom, and a separate WC, offering ample space for students. The property has been thoughtfully refurbished throughout to provide a fresh and welcoming environment.

Externally, the property benefits from off-road parking, a secure rear garden – perfect for outdoor relaxation – and dedicated bike storage, making it ideal for student tenants. Located close to local amenities and transport links, this property is perfectly positioned for student living.











## THE HIGHLIGHTS\_\_

- Student Let
- Available September
- Four Bedroom
- Newly Refurbished
- Spacious Lounge
- Kitchen Diner
- Utility
- Bathroom
- WC
- Close To UEA



*Let's talk*

01603 660000

[sales@abbotfox.co.uk](mailto:sales@abbotfox.co.uk)

[@abbotfox](#)

EPC RATING -

Disclaimer – In accordance with the Property Misdescriptions Act, the company abbotFox gives notice that all descriptions, references to condition, necessary permissions for use and other details are given in good faith and believed to be correct, but any purchaser should not rely on them as statements of fact, and must satisfy themselves by inspection or other means, as to their accuracy.