



JON-PAUL BRAMPTON POWERED BY **exp** TM UK

@jon-paul.brampton@exp.uk.com

🌐 jonpaulbrampton.exp.uk.com

📞 07359 015 020

Charles Street, Tring, Hertfordshire

Offers Over £485,000

🛏️ 2 🚿 1 🚗 1

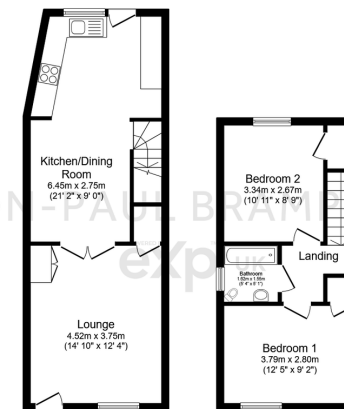


- Victorian cottage with parking
- Two bedrooms
- High ceilings
- Period charm
- No onward chain
- Kitchen/diner
- Wood burning stove
- Tring Conservation Area
- Courtyard garden
- Watch the video tour!





JP Brampton presents...two bedroom Victorian cottage with parking in the Tring Conservation Area.



Ground Floor
Floor area 38.8 sq.m. (417 sq.ft.)

First Floor
Floor area 29.8sq.m. (320 sq.ft.)

Total floor area: 68.5 sq.m. (738 sq.ft.)

This floor plan is for illustrative purposes only. It is not drawn to scale. Any measurements, floor areas (including any total floor area), openings and orientations are approximate. No details are guaranteed, they cannot be relied upon for any purpose and do not form any part of any agreement. No liability is taken for any error, omission or misstatement. A party must rely upon its own inspection(s). Powered by www.Propertybox.io

JON-PAUL BRAMPTON
exp UK

Energy performance certificate (EPC)		
21 CHARLES STREET TRING HP20 9SD	Energy rating D	Valid until: 4 June 2031
Property type End-terrace house	Total floor area 92 square metres	Certificate number: 2004-9125-6915-3028-8601
Rules on letting this property		
Properties can be let if they have an energy rating from A to E.		
You can read guidance for landlords on the regulations and exemptions https://www.gov.uk/guidance/domestic-estate-letting-property-minimum-energy-efficiency-standards-landlords-guidance		