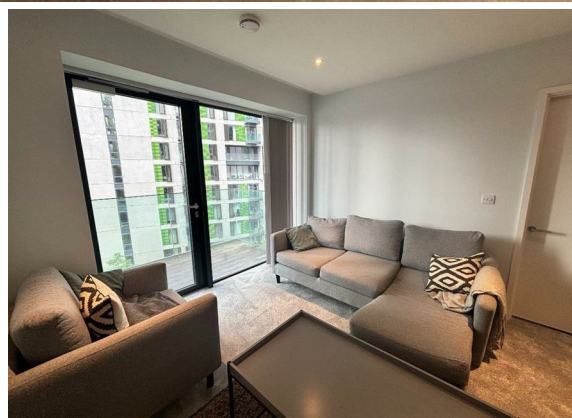
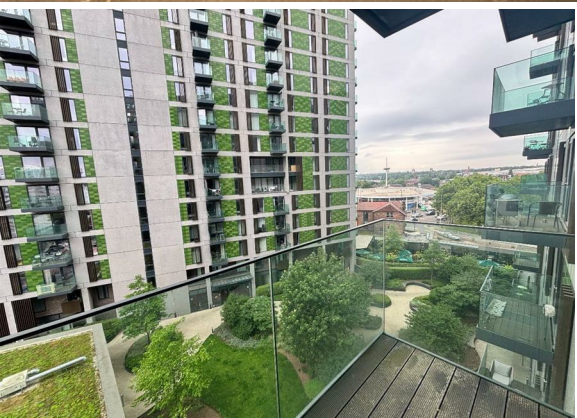




2 Bed
Apartment
located in

£1,500 PCM



 **NPP**
RESIDENTIAL

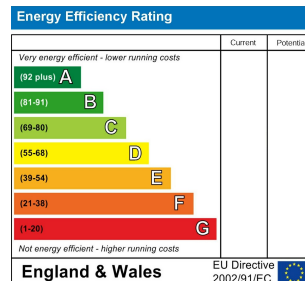


Floor Plan
Floor area 63.9 m² (688 sq.ft.)

TOTAL: 63.9 m² (688 sq.ft.)

This floor plan is for illustrative purposes only. It is not drawn to scale. Any measurements, floor areas (including any total floor area), openings and orientations are approximate. No details are guaranteed, they cannot be relied upon for any purpose and do not form any part of any agreement. No liability is taken for any error, omission or misstatement. A party must rely upon its own inspection(s). Powered by www.Propertybox.io

EPC Rating:
Council Tax Band: D



DIRECTIONS

CONTACT

22 Lloyd Street
Manchester
M2 5WA

E: info@nppresidential.co.uk
T: 0161 639 0059
<https://nppresidential.co.uk/>

