



Hawtrey Road, NW3

£1,269 Per week

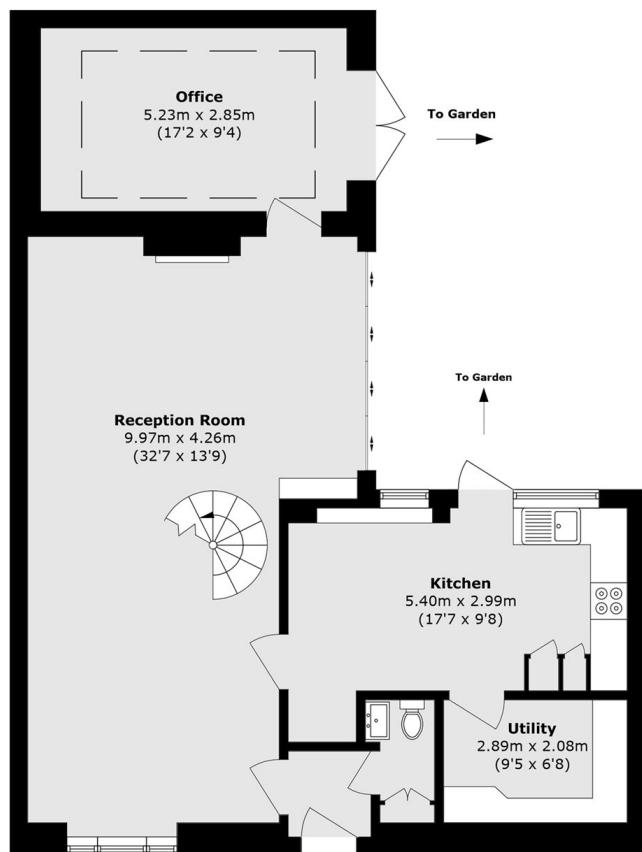
A spacious three bedroom house located walking distance from Primrose Hill. This property offers a spacious reception, separate kitchen, three double bedrooms, two bathrooms one being an en-suite, a conservatory and private garden.

Hawtrey Road ideally located for Primrose Hill and Swiss Cottage underground station (Jubilee line) and Chalk Farm (Northern Line).

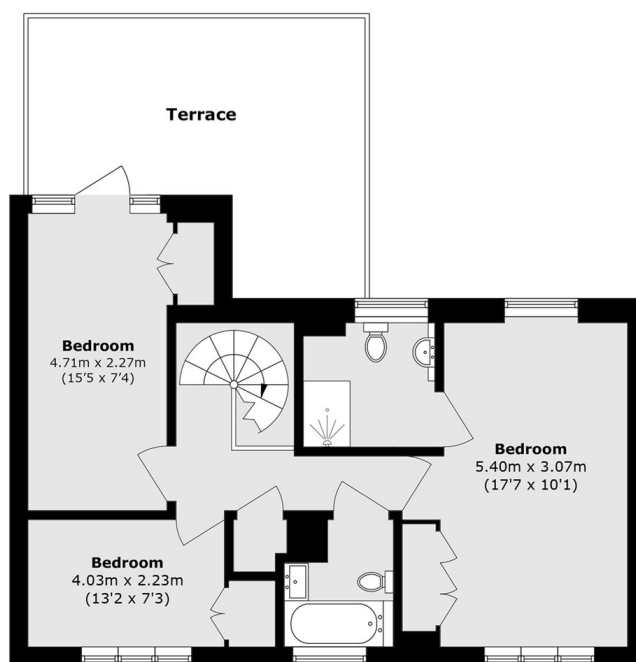
Features

- Three Double Bedroom
- Separate Kitchen
- Private Garden
- Great Location
- Wooden Floors
- Conservatory

Hawtrey Road, London, NW3



Ground Floor



First Floor

Total area (approx.): 153.1 sq. m (1647.9 sq. ft)

Terrace area (approx.): 19.6 sq. m (211.0 sq. ft)