



FOR SALE
Denison's
01202 464748

103

103 Salisbury Road

Denison's

103 Salisbury Road

Burton, BH23 7JR

£535,000

A beautifully presented and refurbished chalet bungalow situated in a highly sought-after village location, just a short walk from the village green, local shop and parish church, and approximately two miles from the historic town centre of Christchurch, including the renowned Christchurch Priory. This attractive and thoughtfully extended home offers versatile and well-proportioned accommodation comprising three bedrooms, a modern shower room and a separate bathroom, ideal for both families and those seeking flexible living space. The property further benefits from gas central heating and is presented in excellent decorative order throughout. To the rear is a south-westerly facing, low-maintenance garden, perfect for enjoying the afternoon and evening sun. Externally, the property also provides off-road parking and a garage. An internal viewing is highly recommended to appreciate the quality, location and lifestyle this superb home has to offer.



Entrance Hallway 20' 3" x 6' 8" (6.17m x 2.03m)

Living Room/Bedroom 17' 5" x 12' 7" (5.30m x 3.83m)

Office/Bedroom 9' 8" x 8' 2" (2.94m x 2.49m)

Kitchen/Diner 18' 7" x 15' 2" (5.66m x 4.62m)

Living Area 9' 2" x 13' 0" (2.79m x 3.96m)

Dining Room/Snug 8' 9" x 12' 8" (2.66m x 3.86m)

Bathroom 5' 0" x 8' 2" (1.52m x 2.49m)

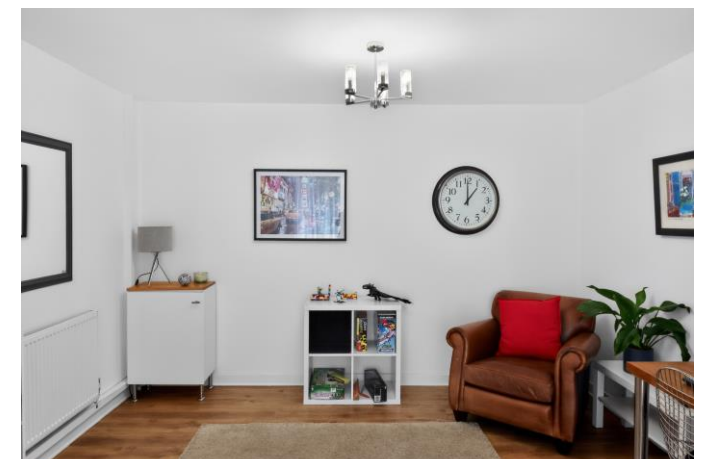
Bedroom 15' 9" x 12' 8" (4.80m x 3.86m)

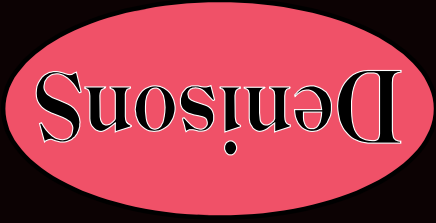
Bathroom 5' 5" x 6' 11" (1.65m x 2.11m)

Bedroom 18' 7" x 11' 11" (5.66m x 3.63m)

Rear Garden

Garage





Denisons for themselves and for the Vendors or lessors of this property, whose Agents they are, give notice that these particulars are produced in good faith, are set out as a general guide only and do not constitute any part of a Contract. No person in the employment of Denisons has any authority to make or give any representation or warranty whatever in relation to this property.

www.denisons.com

Mayfair
 Cashel House, London, W1U 3JT
 0870 112 7099
 mayfair@denisons.com

Christchurch
 12 Castle Street, Christchurch BH23 1DT
 01202 484748
 christchurch@denisons.com



Score	Energy rating	Current	Potential
1-20	G		
21-38	F		
39-54	E		
55-68	D		
69-80	C	72 C	
81-91	B		81 B
92+	A		

103 Salisbury Road

Approximate Gross Internal Area
 1561 sq ft - 145 sq m



Not to Scale. Produced by The Plan Portal 2026
 For Illustrative Purposes Only.