



ANDREW
EXELBY
ESTATE AGENTS

Harbour Mews, Sennen Cove

£535,000

3 2 1



THREE BED END OF TERRACE COTTAGE ** OFF STREET PARKING FOR TWO CARS ** METRES FROM COVE AND SEAFRONT ** CHAIN FREE

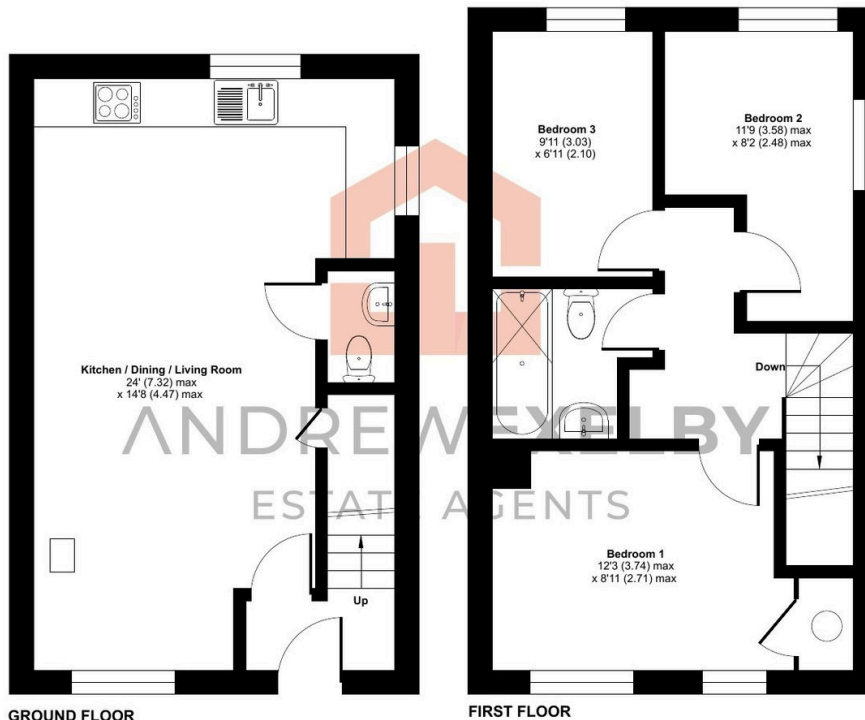


Key Features

- END OF TERRACE 3 BED HOUSE
- OFF STREET PARKING FOR TWO CARS
- GLORIOUS SEA AND BEACH VIEWS
- LESS THAN 100 METRES FROM COVE
- LOFT SPACE IDEAL FOR CONVERSION
- BUILT IN 2000 WITH RECENT IMPROVEMENTS
- FRONT PATIO GARDEN FOR SEATING
- LEASEHOLD: 976 YEARS REMAINING
- EPC - TBC
- COUNCIL TAX BAND - BUSINESS RATES

The Harbour Mews, Sennen Cove, Penzance, TR19

Approximate Area = 732 sq ft / 68 sq m
For identification only - Not to scale



Floor plan produced in accordance with RICS Property Measurement 2nd Edition, Incorporating International Property Measurement Standards (IPMS2 Residential). © nichcom 2026. Produced for Andrew Exelby Estate Agents. REF: 1433965