

Apt 2 Lyndhurst Court 22 Whitelaw Road, Chorlton, Manchester, M21 9RS



JP&Brimelow
ESTATE AGENTS

Offers In The Region Of £200,000




VIDEO TOUR AVAILABLE A delightful and well-presented, ONE DOUBLE BEDROOM, lower ground floor apartment within this attractive, period conversion. Situated on a highly popular residential road, off High Lane in a central Chorlton location. Within a five-minute walk to the Metrolink station on Wilbraham Road, giving you direct access to City life and Media City. Close to all the independent shops, restaurants and bars nearby on Beech Road, Chorlton centre, parks and schools are also within close proximity. In brief the well-planned apartment consists of; A private entrance for Apt one & two, a private entrance hall, an open plan lounge/ kitchen area, a modern white three-piece bathroom suite, and a good-sized double bedroom completing this delightful apartment. The apartment benefits from electric heating, an intercom system, and secure gated parking.





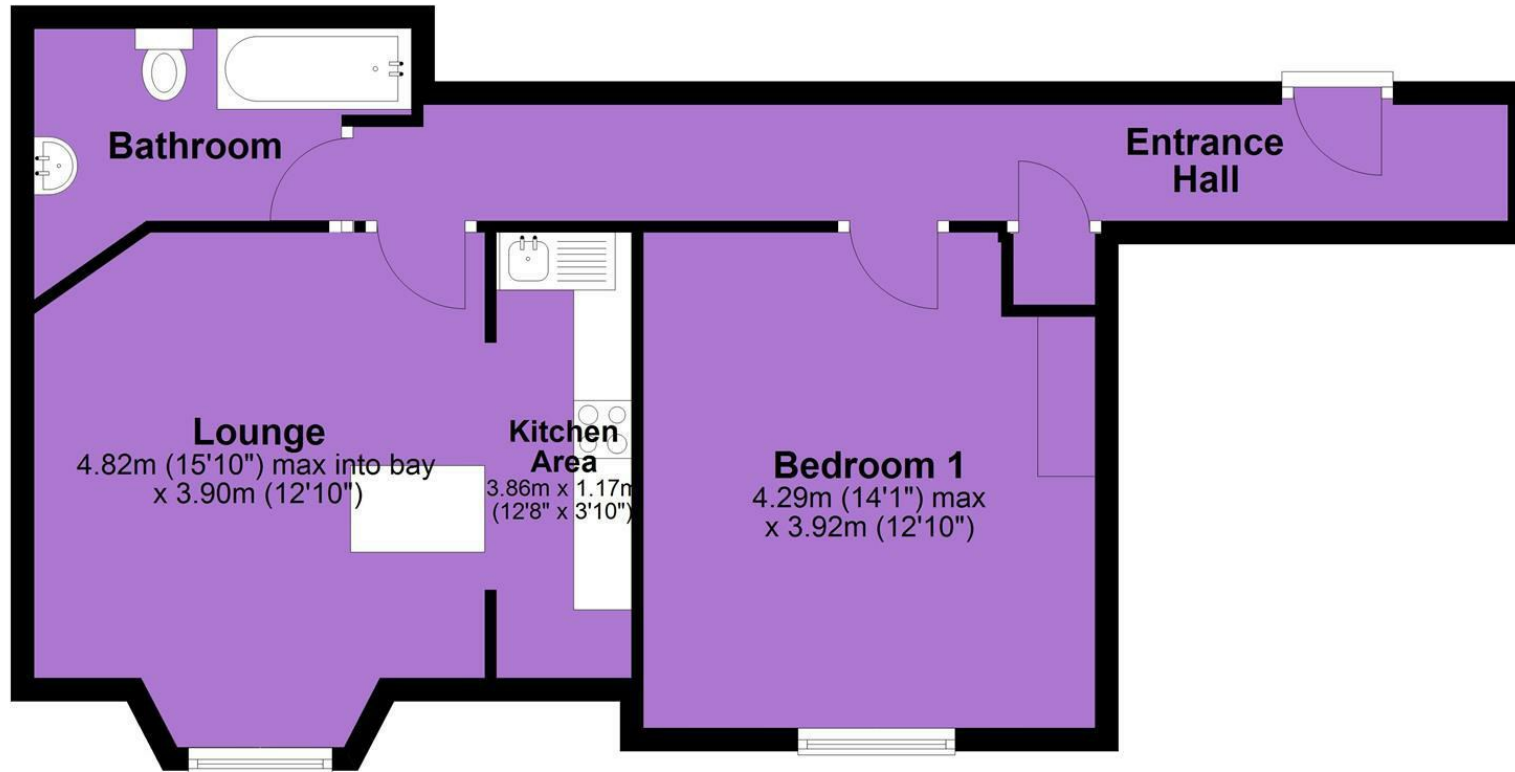
EPC Chart

Energy Efficiency Rating		Current	Potential
<i>Very energy efficient - lower running costs</i>			
(92 plus) A			
(81-91) B			81
(69-80) C			
(55-68) D			
(39-54) E		44	
(21-38) F			
(1-20) G			
<i>Not energy efficient - higher running costs</i>			
England & Wales		EU Directive 2002/91/EC 	



Tenure: **Leasehold** Council Tax Band: **A**

Lower Ground Floor



JP & Brimelow Estate Agents Ltd
430 Barlow Moor Road, Manchester, M21 8AD
Tel: 0161 8822233
E: sales@jpbrimelow.co.uk www.jpandbrimelow.co.uk



JP & Brimelow
ESTATE AGENTS

NOTICE: JP & Brimelow Estate Agents Ltd for themselves and for the vendors or lessors of this property whose agents they are give notice that:

- (i) the particulars are set out as a general outline only for the guidance of intending purchasers or lessees, and do not constitute, nor constitute part of, an offer or contract;
- (ii) all descriptions, dimensions, references to the condition and necessary permissions for use and occupation, and other details are given in good faith and are believed to be correct but any intending purchasers or tenants should not rely on them as statements or representations of fact but must satisfy themselves by inspection or otherwise as to the correctness of each of them;
- (iii) no person in the employment of JP & Brimelow Estate Agents Ltd has any authority to make or give any representation or warranty whatever in relation to this property.

 [jpandbrimelowstateagents](https://www.instagram.com/jpandbrimelowstateagents)

 [@jpandbrimelow](https://www.twitter.com/jpandbrimelow)