



Busch Close, TW7

£1,795 Per calendar month

This beautifully presented two bedroom first floor apartment is set within a modern gated development close to Syon Park. Refurbished to a high standard, it offers bright living space, two double bedrooms and a modern fitted kitchen. The development benefits from secure entry and allocated parking, with the River Thames and local amenities nearby.

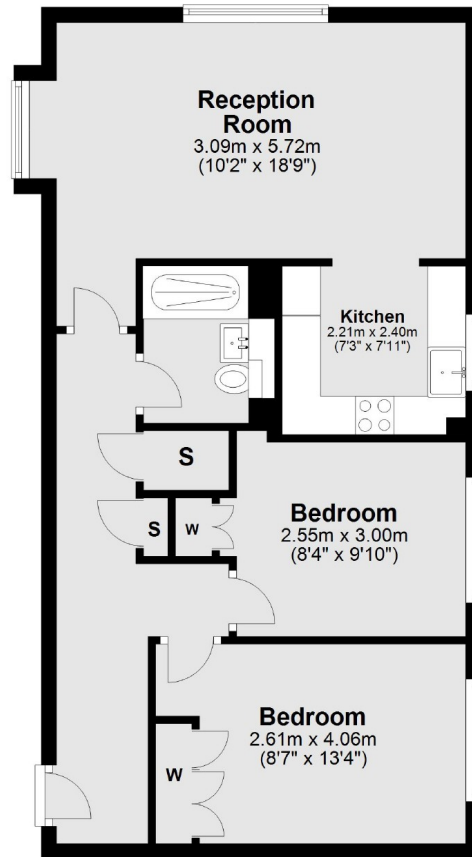
Catherine House is situated opposite Syon Park with Syon Lane mainline station only 0.4 miles away with its trains to London Waterloo and half a mile from the River Thames.

Features

- Gated Development
- Bright Reception Room
- Two Double Bedrooms
- Luxury Shower Room
- Close To Syon Park
- Allocated Parking Space

Busch Close, Isleworth, TW7

Second Floor



Total area: approx. 58.1 sq. metres (625.7 sq. feet)