



Langham Way, Ivybridge

£290,000

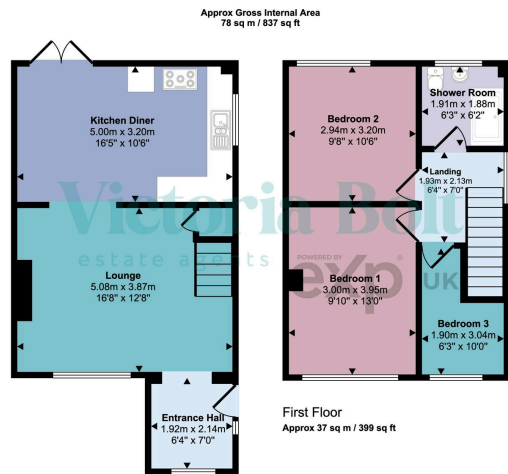
🛏 2 🚿 1 🛋 1



- Three-bedroom semi-detached home
- Modern kitchen-diner with garden access
- Tiered rear garden with decking and patio areas
- Off-road parking to the front
- Quiet residential location
- Bright and spacious lounge
- Contemporary first-floor shower room
- Elevated position with pleasant open views
- Newly fitted windows at the front of the property
- Convenient access to Ivybridge town centre, schools and transport links



A well-presented three-bedroom semi-detached home with a modern kitchen-diner, tiered rear garden and open views, located in a popular residential area of Ivybridge close to local amenities and countryside walks.



Ground Floor
Approx 41 sq m / 438 sq ft

This floorplan is only for illustrative purposes and is not to scale. Measurements of rooms, doors, windows, and any items are approximate and no responsibility is taken for any error, omission or mis-statement. Icons of items such as bathroom suites are representations only and may not look like the real items. Made with Made Snappy 360.

