



Guide Price
£300,000

Freehold

2x  1x  2x 

**Mill Road, Dartford,
Kent, DA2**

OVER 60?

Secure this property
for up to **59% less!**

Wards
Helping you move forwards



Main features

- End of terrace house
- Large rear garden ideal for entertaining
- End of terrace position offering added privacy
- Convenient access to local amenities and transport links
- Ideal for first time buyers or investors

Accommodation

SPLIT LEVEL GROUND FLOOR

Lounge: 11'3 x 10'1 (3.43m x 3.08m)

Dining Room: 11'3 x 10'1 (3.43m x 3.08m)

Kitchen: 10'1 x 6'9 (3.08m x 2.06m)

Bathroom: 6'9 x 5'6 (2.06m x 1.68m)

FIRST FLOOR

Landing

Bedroom 1: 11'3 x 10'3 (3.43m x 3.13m)

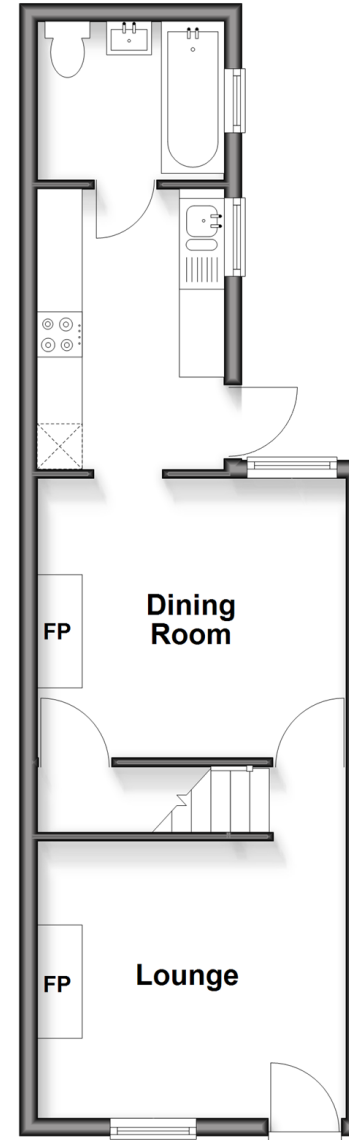
Bedroom 2: 11'4 x 10'1 (3.46m x 3.08m)

OUTSIDE

Rear Garden

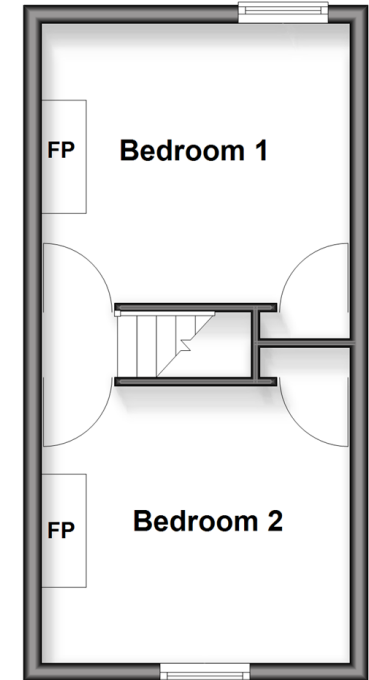
Split Level Ground Floor

Approx. 34.8 sq. metres (374.6 sq. feet)



First Floor

Approx. 24.3 sq. metres (261.6 sq. feet)



Call Dartford - 01322 288211 ■ wardsof Kent.co.uk

■ Through a Homewise Home For Life Plan people aged 60+ can secure this property for up to 59% less, by purchasing a Lifetime Lease



9012RVL9/20260509/YD/YD