



**202 Halter Way, Andover, SP11 6BF**  
**£1,650 Per Month**

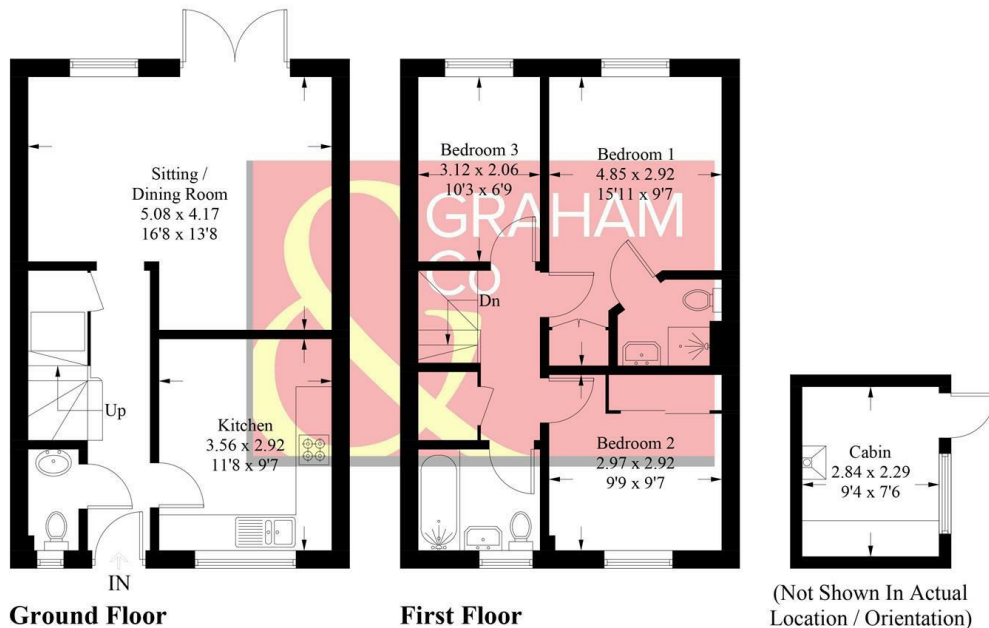
## PROPERTY DESCRIPTION BY *Tanya Owens*

Graham & Co are pleased to offer this three bedroom semi detached family home. Accommodation comprises a spacious hallway, large and modern kitchen, living room, three well-appointed bedrooms, one with an ensuite and then a separate family bathroom. Externally there is an enclosed rear garden, a cabin and off road parking.

Unfurnished.  
Available mid July.

### Halter Way, SP116

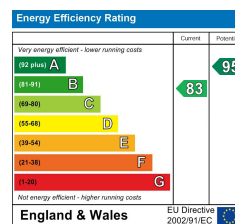
Approximate Gross Internal Area = 81.5 sq m / 877 sq ft  
Cabin = 6.5 sq m / 70 sq ft  
Total = 88 sq m / 947 sq ft



PRODUCED FOR GRAHAM AND CO

Whilst every attempt has been made to ensure the accuracy of the floorplan, measurements of doors, windows and rooms are approximate. These plans are for representation purposes only as defined by RICS Code of Measuring Practice and used as such by any prospective purchaser. © Emzo Marketing (ID1093315)

## DIRECTIONS



**Tax Band: C**



**OPEN 7 DAYS**

If you are considering selling your home please contact us today for your free no obligation valuation

**01264 356500**

IMPORTANT: we would like to inform prospective purchasers that these sales particulars have been prepared as a general guide only. A detailed survey has not been carried out, nor the services, appliances and fittings tested. Room sizes should not be relied upon for furnishing purposes and are approximate. If floor plans are included, they are for guidance only and illustration purposes only and may not be to scale. If there are any important matters likely to affect your decision to buy, please contact us before viewing the property.