

First Floor, Flat 20, Barstaple House, Old Market Street, Old Market, BS2 0EU

£1,195 Per Calander Month

marktempler

RESIDENTIAL LETTINGS





PROPERTY TYPE

Upper Floor Apartment



LOCATION

Old Market Street



BEDROOMS

1



RECEPTION ROOMS

1



BATHROOMS

1



WARMTH

Electric heating



PARKING

None here



OUTSIDE SPACE

Communal grounds



EPC RATING

E



COUNCIL TAX BAND

A

- Delightful first floor converted apartment
- Good size double bedroom accommodation
- Holding deposit - £275.76
- Security deposit - £1,378.84
- Tenancy term - from 12 months
- EPC Rating - E
- Council Tax Band - A

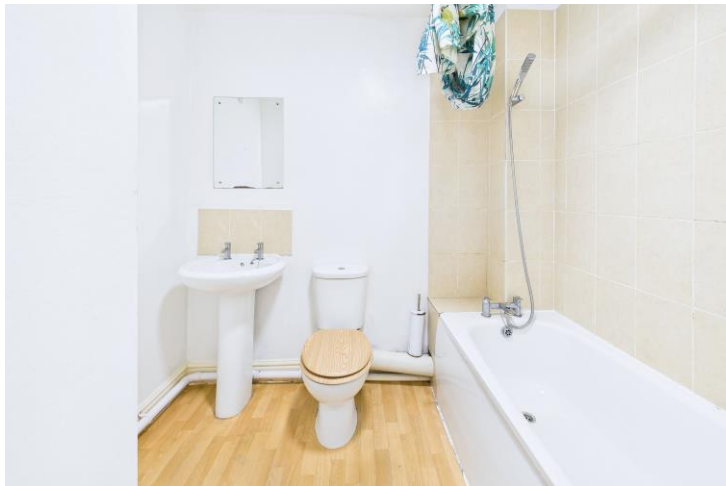
What will it cost to rent this property?

When you submit a completed application form, we will discuss the details with the Landlord. If the Landlord is happy to proceed you will be required to pay:

1. Holding deposit, equivalent to 1 week's rent. This will reserve the property.

Once references are complete, you will be asked to pay:

2. First month's rent
3. Security deposit, equivalent to 5 weeks' rent (for rents under £50,000 per year). This covers damages or defaults on the part of the tenant during the tenancy.



Utilities

Mains water and drainage, mains electric supply, electric heating. This information has been provided by the Landlord and is correct to the best of our knowledge.

Broadband

Standard broadband available with highest available download speed 17 Mbps and highest available upload speed 1Mbps. This information is sourced via checker.ofcom.org.uk, we advise you make your own enquires.

Mobile phone coverage / signal

There is limited to likely coverage indoors depending on the provider and likely coverage outdoors with a range of providers. This information is sourced via checker.ofcom.org.uk, we advise you make your own enquires.



Modern kitchen with integrated fridge freezer and use of washing machine

Close to Bristol Temple Meads Station

White bathroom suite with shower over the bath

Well-tended communal grounds with bike store area

Available From

This property is available to from approximately 13th January 2026 There is an additional cost of £20.00 Per Calendar Month for the tenant to pay, to cover the cost of the water rates



For the latest properties and local news follow Mark Templer Residential Lettings on:



