



Pinkmove

Barn 1 Parc Road

Offers in the region of £575,000

- Bespoke Single Level Living Barn Conversion
- Sought-After Village Location
- Open-Plan Living Space
- Exposed Beams
- Stunning Country Kitchen
- Countryside Views
- Beautiful Courtyard Garden
- EPC Rating: D



2 1 1

Pinkmove

01633 746088
team@pinkmove.co.uk



Pinkmove

About the property

Situated in the sought-after village of Llangybi, this beautifully presented bespoke barn conversion offers a perfect combination of charm, style, and countryside living.

The property features a spacious open-plan living area with stylish exposed beams, creating a warm and characterful space ideal for both relaxing and entertaining. This is complemented by a stunning country kitchen, offering ample space for dining and family gatherings.

Flooded with natural light, the kitchen opens onto the garden, providing a peaceful and private outdoor haven. Externally, the property boasts a beautifully maintained enclosed courtyard garden, thoughtfully designed with a generous paved seating area, mature planting, and timber summer house-creating the perfect space for outdoor dining, entertaining, and relaxation.

The garden further benefits from stunning countryside views, offering a tranquil backdrop and an ideal setting to enjoy the surrounding landscape, with an additional seating area positioned to make the most of the outlook.

There are two generously sized bedrooms, along with a well-appointed bathroom complete with a luxurious freestanding bath, an attractive rustic vanity, and a separate shower cubicle. This unique home seamlessly blends original barn features with modern finishes, creating a distinctive and inviting living environment. Set within a tranquil rural setting with countryside views, yet within easy reach of local amenities, ideal for those seeking a quieter life.



Pinkmove



Pinkmove



Accommodation

Lounge

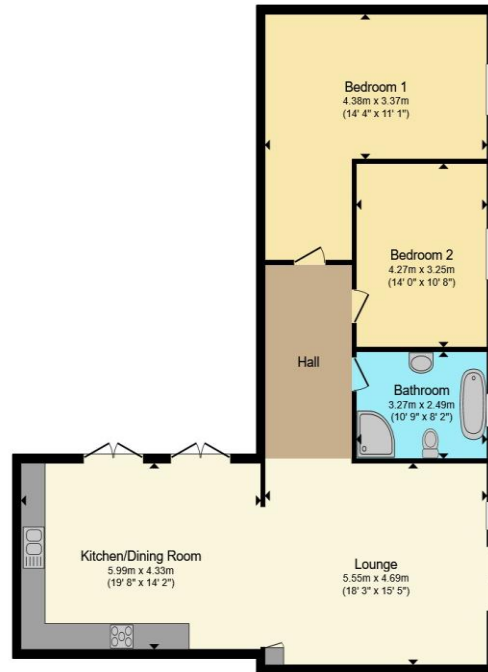
Kitchen/Dining Room

Bathroom

Bedroom 1

Bedroom 2

Floorplan



Total floor area 110.3 sq.m. (1,187 sq.ft.) approx

This floor plan is for illustrative purposes only. It is not drawn to scale. Any measurements, floor areas (including any total floor area), openings and orientation are approximate. No details are guaranteed, they cannot be relied upon for any purpose and they do not form part of any agreement. No liability is taken for any error, omission or misstatement. A party must rely upon its own inspection(s). Powered by www.focalagent.com

Pinkmove

Important Information

Note while we endeavour to make our sales details accurate and reliable, if there is any point which is of particular interest to you, please contact the office and we will be pleased to confirm the position for you. We have not personally tested any apparatus, equipment, fixtures, fittings or services and cannot verify they are in working order or fit for their purposes. Nothing in these particulars is intended to indicate that carpets or curtains, furnishings or fittings, electrical goods (whether wired or not). Gas fires or light fittings or any other fixtures not expressly included form part of the property offered for sale. This computer generated Floorplan, if applicable, is intended as a general guide to the layout and design of the property. It is not to scale and should not be relied upon for dimensions. Tenure: We cannot confirm the tenure of the property as we have not had access to the legal documents. The buyer is advised to obtain verification from their solicitor or surveyor.

Peter Alan Limited is registered in England and Wales under company number 2073153, Registered Office is Cumbria House, 16-20 Hockliffe Street, Leighton Buzzard, Bedfordshire, LU7 1GN. VAT Registration Number is 500 2481 05. For activities relating to regulated mortgages and non-investment insurance contracts, Peter Alan Limited is an appointed representative of Connells Limited which is authorised and regulated by the Financial Conduct Authority. Connells Limited's Financial Services Register number is 302221. Most buy-to-let

