



Queenswood House, Eastfield Road

Brentwood, CM14 4HF

An excellent opportunity to purchase a first floor retirement apartment. The property benefits from a lounge/diner, fitted kitchen, bedroom with fitted wardrobes, shower room, entrance hallway two storage cupboards, newly fitted carpets, residents parking facilities, arranged social clubs, guest accommodation, communal lounge and gardens. Conveniently situated within walking distance of Brentwood High Street and Brentwood train Station enabling the new owner to remain as independent and social as possible.

£130,000 - Leasehold - Council Tax: C

Queenswood House, Eastfield Road

Brentwood, CM14 4HF



Entrance Hall

Entrance door, carpet, electric heater, two storage cupboards, intercom, emergency pull cord.

Reception Room

14'10 x 10'9 (4.52m x 3.05m)

Double glazed window to rear over looking communal gardens, coved ceiling, carpet, electric heater, emergency pull cord.

Kitchen

7'11 x 6'1 (2.41m x 1.85m)

Tiled flooring, fitted wall and base units, stainless steel single drainer sink, electric hob, oven and extractor, integrated fridge freezer, plumbing for washing machine, part tiled walls.

Bedroom

11'7 x 9'11 (3.53m x 3.02m)

Double glazed window to rear over looking communal gardens, coved ceiling, carpet, electric heater, emergency pull cord, fitted wardrobes.

Shower Room

Walk in shower enclosure, tiled walls and flooring, low level WC, vanity wash hand basin, extractor, heated towel rail, emergency pull cord.

Residents Parking

Residents communal parking area.

Communal Gardens

Residents communal gardens.

Material Information

We have been advised by the sellers the following information:

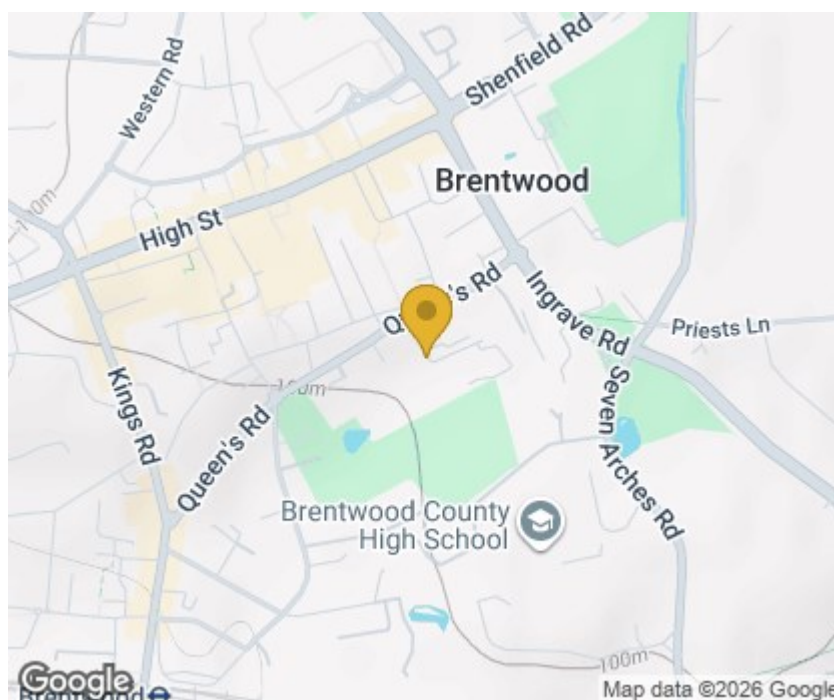
Lease Remaining: 57

Annual Ground Rent: Peppercorn

Ground Rent Review Period: tbc

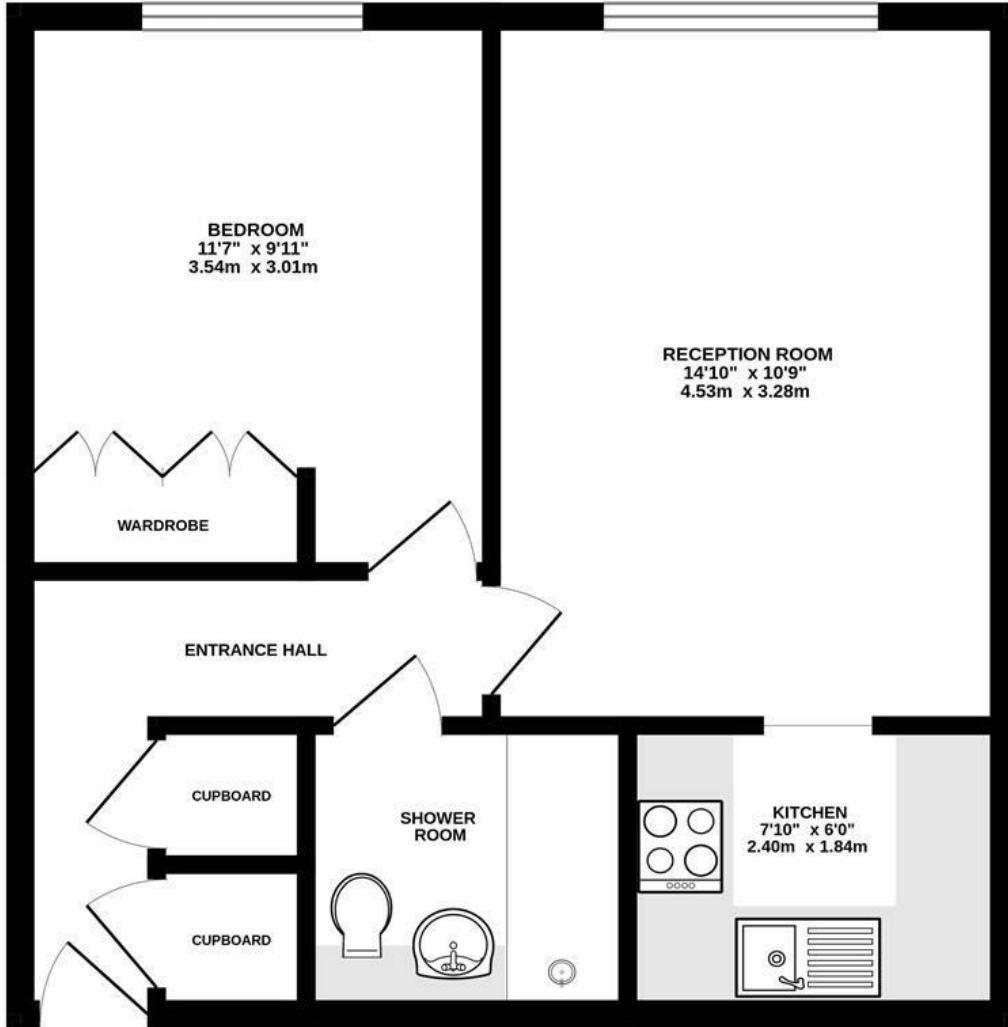
Review increase: tbc

Annual Service Charge: £2,914.00 per annum





FIRST FLOOR
431 sq.ft. (40.0 sq.m.) approx.



TOTAL FLOOR AREA : 431 sq.ft. (40.0 sq.m.) approx.

Whilst every attempt has been made to ensure the accuracy of the floorplan contained here, measurements of doors, windows, rooms and any other items are approximate and no responsibility is taken for any error, omission or mis-statement. This plan is for illustrative purposes only and should be used as such by any prospective purchaser. The services, systems and appliances shown have not been tested and no guarantee as to their operability or efficiency can be given.
Made with Metropix ©2025

These particulars, whilst believed to be accurate are set out as a general outline only for guidance and do not constitute any part of an offer or contract. Intending purchasers should not rely on them as statements of representation of fact, but must satisfy themselves by inspection or otherwise as to their accuracy. No person in this firm's employment has the authority to make or give any representation or warranty in respect of the property.

Material Information:
Council Tax Band: C
Tenure: Leasehold

