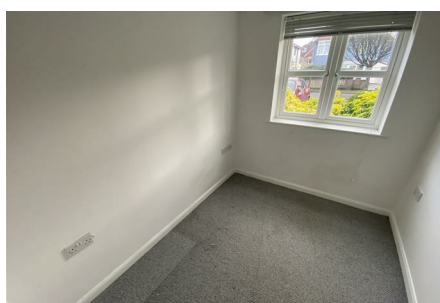


Southwood Avenue, Bournemouth, Bournemouth, Dorset BH6 3QB



£1,250 Per Calendar Month



**** RIGHT BY THE SEA ****

2 Bed, 2 Bath Ground Floor Flat – Southbourne | £1,250 PCM | Available Immediately

Southwood Avenue,
Bournemouth, Dorset, BH6 3QB

A well-presented two-bedroom, two-bathroom ground floor flat ideally located in the highly sought-after Southbourne area, just moments from the sea. Allocated Parking.

This spacious flat benefits from a fantastic coastal location, with Southbourne Beach only a short walk away, making it perfect for those who enjoy seaside living, coastal walks, and a relaxed lifestyle.

Situated close to Southbourne Grove, the property is within easy reach of a wide range of local amenities including independent shops, cafés, bars, restaurants, and supermarkets. Excellent transport links are nearby, providing convenient access to Bournemouth town centre, Christchurch, and surrounding areas.

BELVOIR!

Belvoir Bournemouth
122-124 Castle Lane West, Bournemouth, Dorset, BH9 3JU



Call: 01202 430 108

belvoir.co.uk

GROUND FLOOR 509 sq.ft. (47.3 sq.m.) approx.



TOTAL FLOOR AREA 509 sq.ft. (47.3 sq.m.) approx.

Whilst every attempt has been made to ensure the accuracy of the floorplan contained here, measurements of doors, windows, rooms and any other item are approximate and no responsibility is taken for any error, omission or mis-statement. This plan is for illustrative purposes only and should be used as such by any prospective purchaser. The services, systems and appliances shown have not been tested and no guarantee as to their operability or efficiency can be given.
Made with Metropix 6/2024

Energy Efficiency Rating		Current	Potential
Very energy efficient - lower running costs			
(92 plus) A			
(81-91) B			
(69-80) C			
(55-68) D			
(39-54) E			
(21-38) F			
(1-20) G			
Not energy efficient - higher running costs			
England & Wales	EU Directive 2002/91/EC	75	79

Environmental Impact (CO ₂) Rating		Current	Potential
Very environmentally friendly - lower CO ₂ emissions			
(92 plus) A			
(81-91) B			
(69-80) C			
(55-68) D			
(39-54) E			
(21-38) F			
(1-20) G			
Not environmentally friendly - higher CO ₂ emissions			
England & Wales	EU Directive 2002/91/EC		