



1



1



1



D



Description

We are delighted to offer this one-bedroom town centre flat in Guildbourne Court. The accommodation comprises a fitted kitchen with delightful views of the South Downs, a spacious lounge, a good-sized double bedroom, and a bathroom with an electric shower over the bath. The property also benefits from a south-facing balcony, perfect for enjoying sea views. Additional advantages include a lift service and a private entrance, making this an ideal home in a central location.

Cash buyers only.

Key Features

- One-bedroom town centre flat
- Own private entrance and lift service
- South-facing balcony with sea views
- Good-sized double bedroom
- Fitted kitchen with South Downs views
- Bathroom suite with electric shower
- Cash buyers only
- Convenient central location
- Leasehold with 133 years remaining | Service Charge: £2360 per annum
- EPC Rating D | Council Tax A

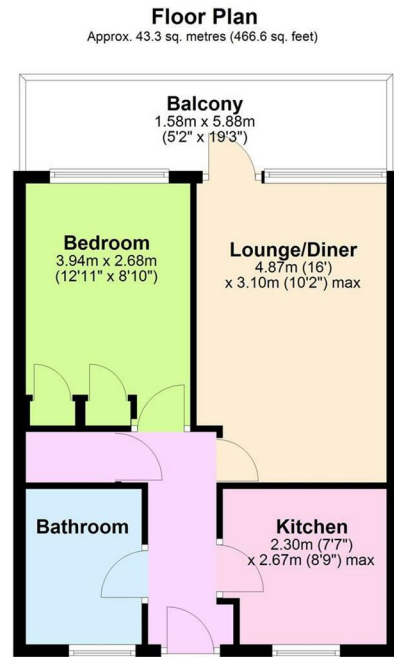


robertluff.co.uk

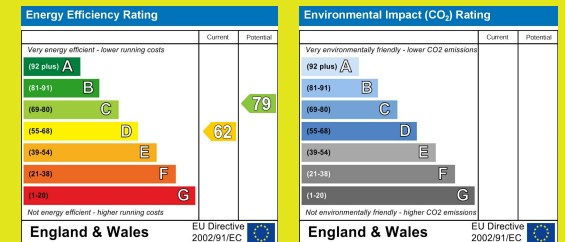
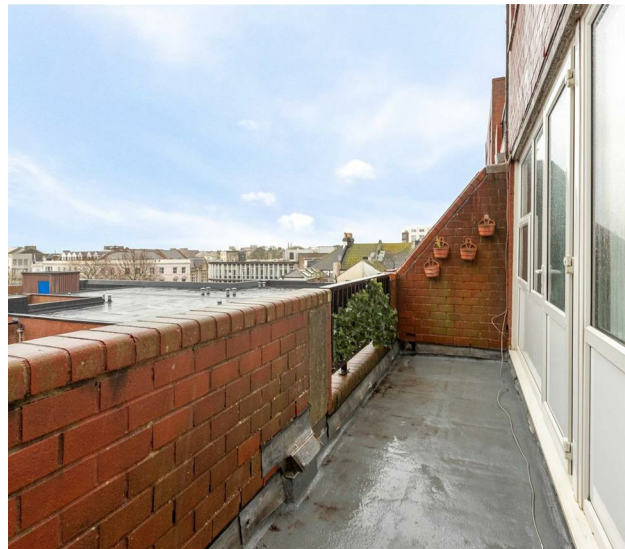
30 Guildbourne Centre, Worthing, West Sussex, BN11 1LZ | 01903 331247 | info@robertluff.co.uk

Robert
Luff & Co

Floor Plan Guildbourne Centre



Total area: approx. 43.3 sq. metres (466.6 sq. feet)



The information provided about this property does not constitute or form any part of an offer or contract, nor may it be regarded as representations. All interested parties must verify accuracy and your solicitor must verify tenure/lease information, fixtures and fittings and, where the property has been extended/converted, planning/building regulation consents. All dimensions are approximate and quoted for guidance only as are floor plans which are not to scale and their accuracy cannot be confirmed. References to appliances and/or services does not imply that they are necessarily in working order or fit for the purpose.

robertluff.co.uk

30 Guildbourne Centre, Worthing, West Sussex, BN11 1LZ

01903 331247 | info@robertluff.co.uk

Robert
Luff & Co