



Cambridge Park, TW1

£21,000 Per calendar month

An exceptional seven bedroom family residence of outstanding quality, finished to the highest standard throughout. Set behind secure electronic gates with beautifully landscaped gardens of around 0.4 acres, this elegant home perfectly balances luxurious living with impressive entertaining space. The property also features a self-contained staff annexe, providing excellent flexibility for guests or live-in help. Rarely does a property of such calibre and privacy come to the lettings market.

Located in the heart of East Twickenham, this prestigious address offers effortless access to the boutique shops, cafés, and riverside walks of St Margarets and Richmond. Richmond Park and excellent local schools are close by, while St Margarets and Richmond Stations provide fast connections into Central London. Blending village charm with urban sophistication, this is one of south west London's most sought-after locations. Marble Hill Park is also close by.

Features

- Prestigious Gated Home
- Seven Elegant Bedrooms
- Car Port & Double Garage
- Self-Contained Annexe
- Entertaining Spaces
- Manicured Private Gardens



Cambridge Park, TW1

This beautifully designed home offers an exceptional blend of sophistication, comfort, and space. Every detail has been considered, from the high-specification finishes to the seamless flow between the living areas and the bedroom accommodation.

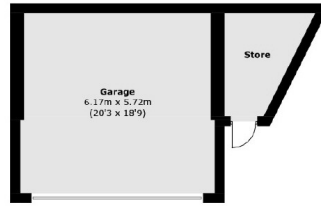
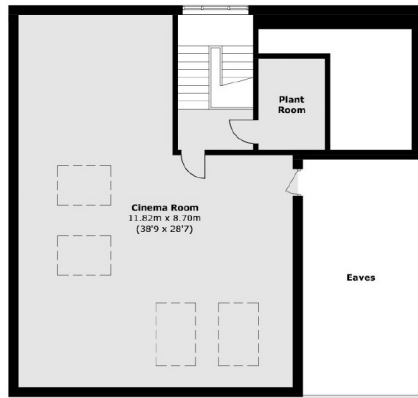
The ground floor comprises a grand reception hall leading to a formal drawing room, an elegant study, and a welcoming family room. A versatile playroom opens onto an internal courtyard that connects to a self-contained staff annexe. The heart of the home is a breathtaking open-plan kitchen and entertaining area, designed for both family living and large-scale hosting, with a separate utility room completing the ground floor.

The first floor offers a luxurious principal bedroom suite with an impressive en suite bathroom and dressing area, accompanied by two additional bedroom suites.

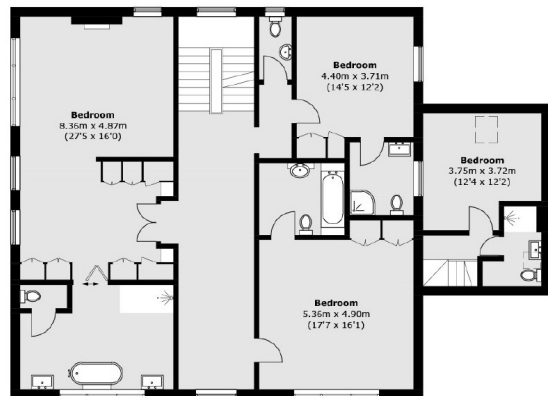
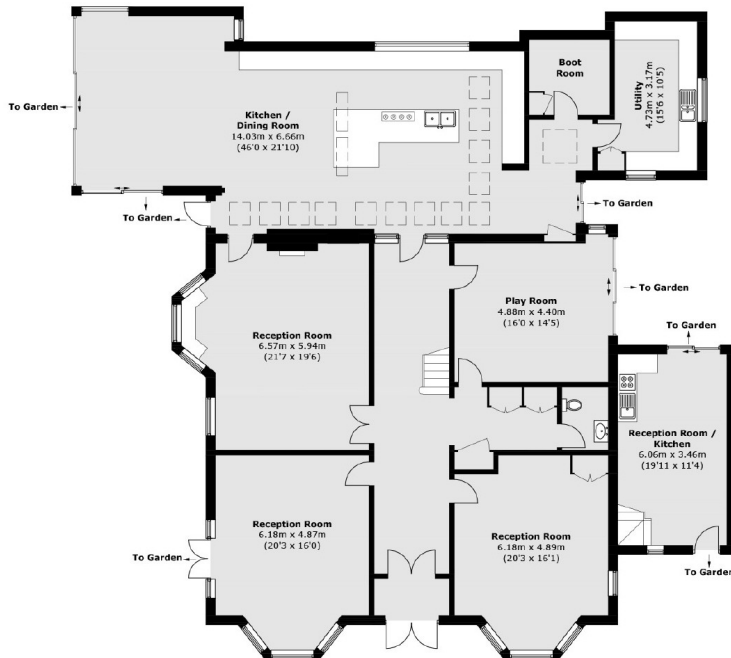
On the second floor there are four further double bedrooms and two beautifully appointed family bathrooms, along with access to a substantial loft. The house is surrounded by landscaped gardens approaching 0.4 acres and screened by mature trees to ensure complete privacy. Secure electronic gates open to a large driveway with ample off-street parking, a car port and garage.



Cambridge Park, Twickenham, TW1



(Not Shown In Actual Location / Orientation)



Ground Floor **First Floor**
 Total area (approx.): 666.4 sq. m (7,173.0 sq. ft)
 Annex: 41.9 sq. m (451.0 sq. ft)
 (Excluding Eaves)
 Garage / Store: 43.2 sq. m (465.0 sq. ft)