

## Marshall Street, W1F

£725 Per week

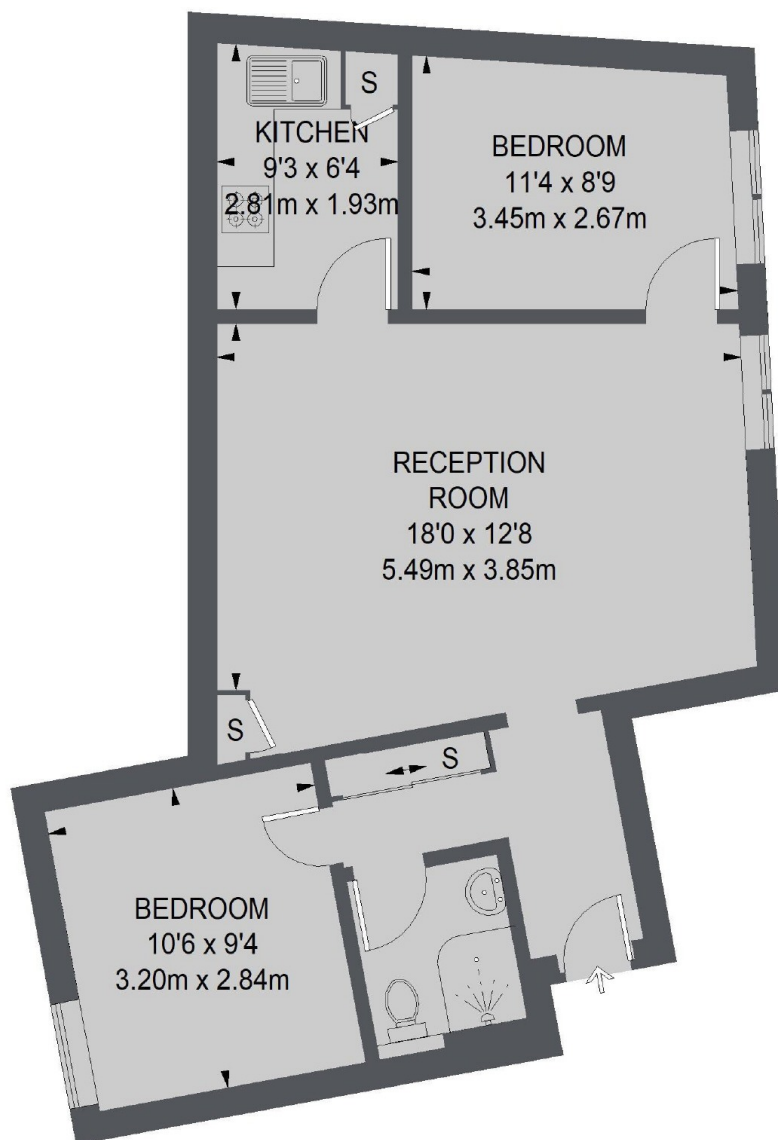
A well proportioned two double bedroom apartment on the second floor of this well maintained secure development in the heart of Soho with lift access and separate kitchen.

Marshall Street is ideally located in the heart of London's West End offering a variety of shops, restaurants and bars. Carnaby Street and Piccadilly Circus are close by.

### Features

- Lift Access
- Double Bedrooms
- Cloakroom
- Dual Aspect
- Fully Tiled Bathroom
- Separate Kitchen

# Marshall Street, London, W1F



## SECOND FLOOR

TOTAL APPROX. FLOOR AREA  
612 SQ. FT. (56.82 SQ. M.)