



Warren Mews, WIT

£1,962 Per week

Dexters



Warren Mews, W1T

This exceptionally spacious three bedroom apartment is arranged over three floors of the serene mews area, centrally located in Fitzrovia. The apartment has an open plan kitchen/dining area along with modern furniture throughout the property with great storage space.

Located on a cobbled mews between Conway Street and Cleveland Street, with Regent's Park and Great Portland Street Tubes virtually on your doorstep, and the hustle and bustle of Oxford Street close by.

Features

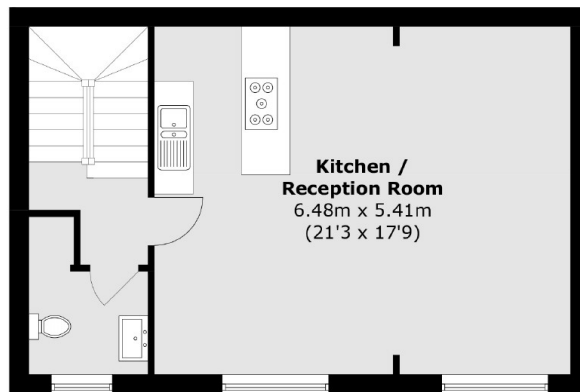
- Three Bedroom
- Three Bathroom
- Spacious
- Open Plan Kitchen
- Wooden Floors
- Central Location



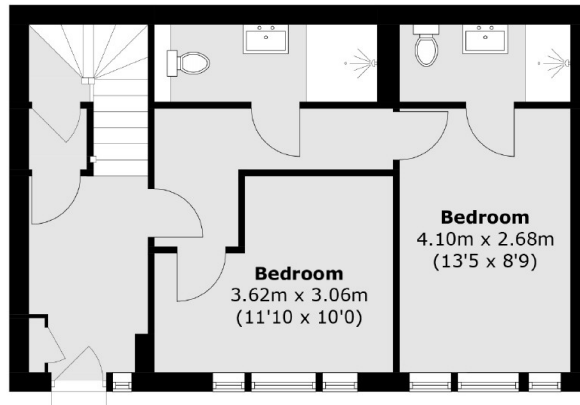
Warren Mews, London, W1T



Second Floor



First Floor



Ground Floor

Total area (approx.): 136.4 sq. m (1,467.6 sq. ft)