



Guide Price
£450,000

Freehold

3x  2x  2x 

**Bradstow Way,
Broadstairs, Kent, CT10**

Wards
Helping you move forwards



Main features

- Chain free
- Off road parking
- Patio and large sunny garden laid to lawn
- Spacious three bedroom property with a versatile layout
- Two family bathrooms

Accommodation

GROUND FLOOR

- Hallway
- Lounge: 13'3 x 11'6 (4.04m x 3.51m)
- Bedroom 3: 12'9 x 11'5 (3.89m x 3.48m)
- Kitchen: 11'5 x 10'4 (3.48m x 3.15m)
- Dining Area: 17'7 x 12'4 (5.36m x 3.76m)
- Bathroom

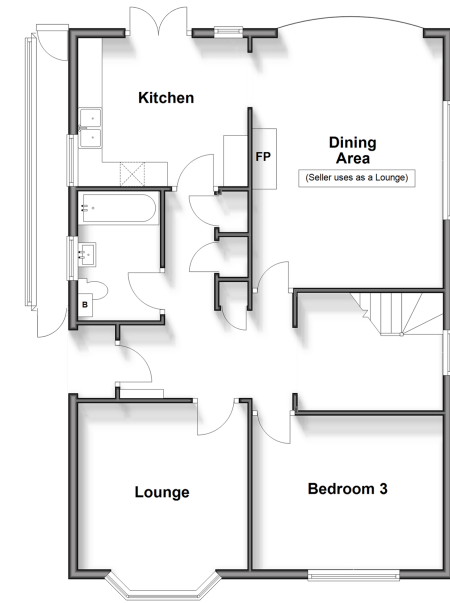
FIRST FLOOR

- Landing
- Bedroom 2: 15'1 x 10'7 (4.60m x 3.23m)
- En-suite Shower
- Bedroom 1: 16'1 x 14'8 (4.91m x 4.47m)

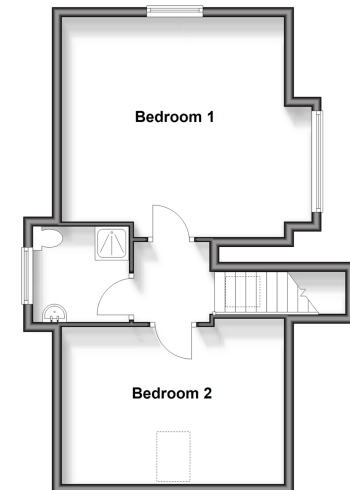
OUTSIDE

- Front garden
- Off road parking
- Rear garden

Ground Floor
Approx. 82.7 sq. metres (890.2 sq. feet)



First Floor
Approx. 47.3 sq. metres (509.7 sq. feet)



Call Broadstairs - 01843 602546 ■ wardsof Kent.co.uk

- Legal advice should be taken to verify fixtures/fittings, planning, alterations and/or lease details
- Appliances & services are untested, dimensions are approximate and floor plans are not to scale



10229455/20251027/TB/ATN