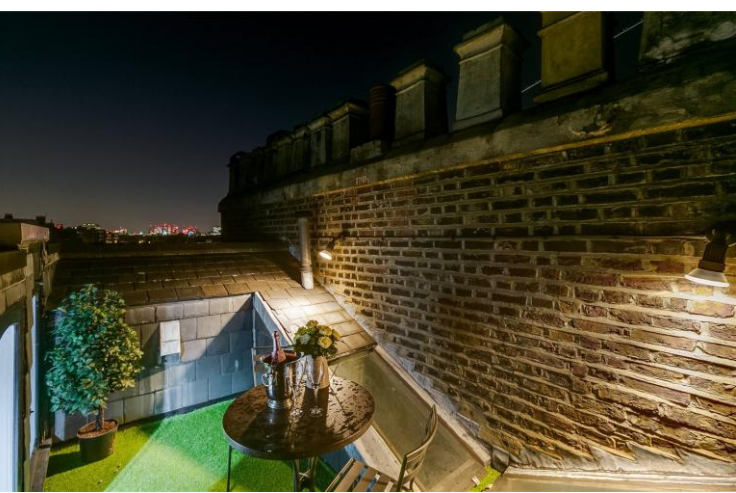




Onslow Gardens  
South Kensington, SW7

CHESTERTONS





(SHORT-LET) A unique newly refurbished one bedroom flat on the top floor of a well maintained Period conversion with views over communal gardens. The flat benefits from a stunning view and amazing roof terrace.

- A newly refurbished flat with a vaulted ceiling and exposed beams
- Bedroom, modern bathroom, contemporary open plan kitchen, reception room, study area
- Private roof terrace with far reaching views
- In close proximity to South Kensington

### £5,000 pcm

Additional tenant charges apply (fees apply to non-AST tenancies only)

Tenancy Agreement Fee: £300

References per Tenant/Guarantor: £60

Inventory check (approx. £100 – £250 inc. VAT)

[chestertons.co.uk/property-to-rent/applicable-fees](http://chestertons.co.uk/property-to-rent/applicable-fees)

Score	Energy rating	Current	Potential
92+	A		
81-91	B		
69-80	C		77 C
55-68	D	69 D	
39-54	E		
21-38	F		
1-20	G		

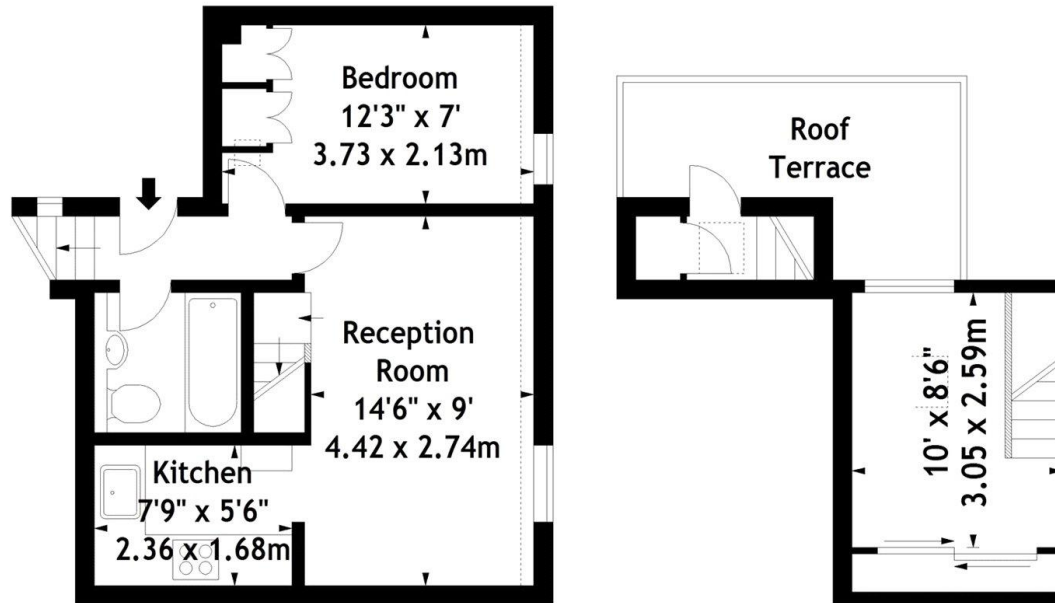
**Minimum Term:** 1 months  
**Deposit Required:** £5,769.23  
**Local Authority:**  
**Council Tax Band:** F  
**EPC Rating:** D  
**Furnished**

### Chestertons South Kensington Lettings

44-48 Old Brompton Road  
 South Kensington  
 London  
 SW7 3DY

[southkensingtonlettingsusers@chestertons.co.uk](mailto:southkensingtonlettingsusers@chestertons.co.uk)  
 02075891244

Onslow Gardens, SW7  
Approx. Gross Internal Area  
462 Sq Ft - 42.92 Sq M



Fourth Floor

Fifth Floor

Measured in accordance with RICS guidelines. Every attempt is made to ensure accuracy, however all measurements are approximate.

This floor plan is for illustrative purposes only and is not to scale.

© Datography Ltd 2015

Photographs \* Floorplans \* Virtual Tours

Tel: 0845 643 4401 [www.datography.com](http://www.datography.com)

