



Muswell Hill Road, N10

£2,475,000 Per calendar month

Set over three floors of living space is this charming Edwardian family home with standout period features and high ceilings. The house has five bedrooms, three bathrooms and two separate guest lavatories. With a large rear extension creating open plan living with direct access out onto a mature garden with a fully functional home office.

This exclusive location is on the door step of Muswell Hill Broadway where you will find a variety of eateries, boutique businesses and events located at Alexandra Palace whilst being situated close to Highgate Station and within catchment of local schools.

Features

- Five Bedrooms
- Three Bathrooms
- Edwardian Features
- Off Street Parking, EV Charging
- Home Office
- Exclusive Broadway Location



Muswell Hill Road, N10

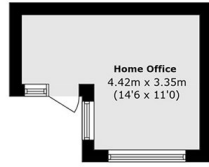
The property has been extended to create a bright and spacious layout, with the kitchen providing direct access to the rear garden, perfect for indoor-outdoor living. The house offers plenty of practical space, including a guest cloakroom, utility/laundry room, and a study.

Across the first and second floors, there are five well-sized bedrooms. The principal bedroom includes a dressing room and private en-suite bathroom, while the remaining bedrooms are served by two additional family bathrooms. Complementing the interior space is a separate garden studio/home office located at the end of the garden, ideal for working from home or creative use.

The property also comes with off street parking and an EV charging point.

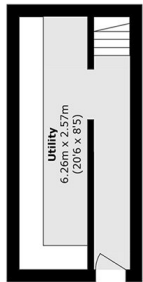
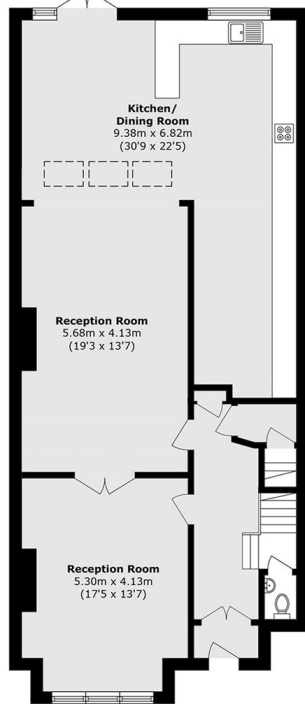


Muswell Hill Road, London, N10



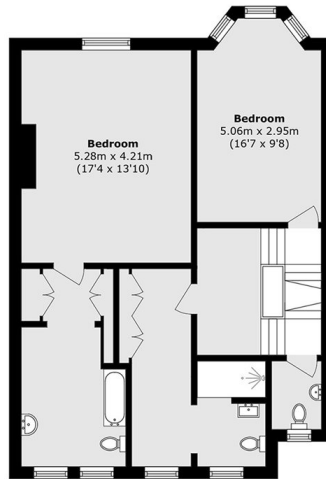
Ground Floor

To Garden

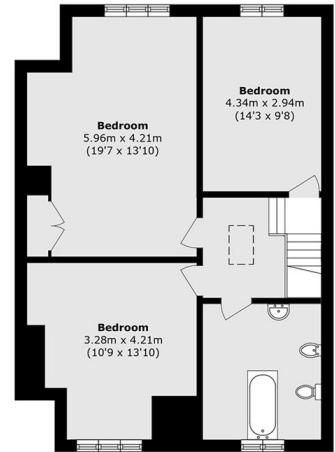


Lower Ground Floor

Ground Floor



First Floor



Second Floor

Total area (approx.): 278.1 sq. m (2993.4 sq. ft)

Outbuilding area (approx.): 12.1 sq. m (131.0 sq. ft)