



Kensington Gardens Square | Bayswater | London | W2

Asking Price - £3,727 Per month



- One double bedroom flat
- Second floor private block
- Generous reception room
- Overlooks Kensington Garden Square
- Access to communal garden
- On-site building manager
- 24-hour emergency helpline
- Close to transport links

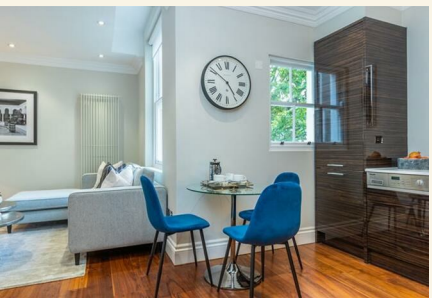
Set on the second floor of a well maintained private building, this attractive one bedroom apartment is ideally positioned overlooking the beautiful Kensington Garden Square.

The property offers a generous reception room, enhanced by large windows that frame charming views across the square and allow an abundance of natural light to flood the space. The separate kitchen is well designed and practical, providing excellent storage and preparation space.

The apartment further comprises a spacious double bedroom with a calm and comfortable atmosphere, along with a neatly presented bathroom conveniently located off the main hallway. Residents also benefit from access to the communal gardens, offering a peaceful green setting in the heart of the city.

Located within the highly desirable Kensington



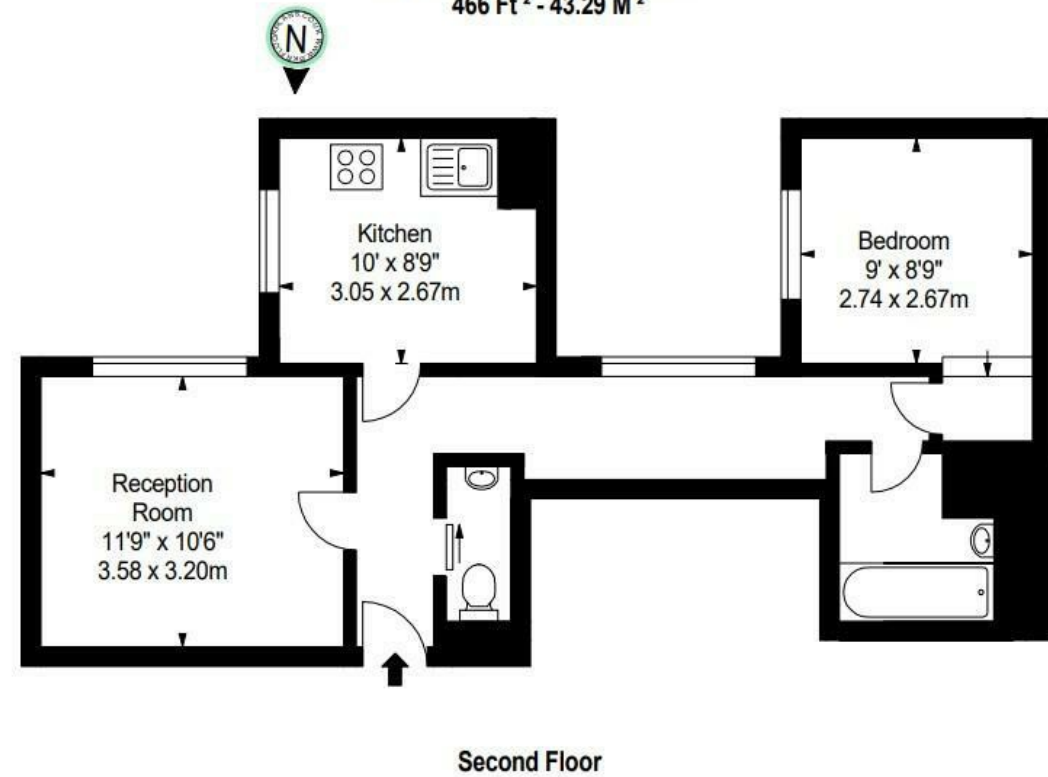


Gardens Square, the property enjoys close proximity to excellent local amenities, boutique shops, cafés and restaurants, while remaining moments from superb transport connections.

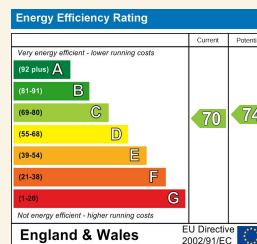
Bayswater Underground Station (Circle and District Lines) is just a short walk away, providing direct access to Victoria, Westminster and the City. Paddington Station is also within easy reach, giving access to National Rail services, the Elizabeth Line and the Heathrow Express, making travel to the West End, Canary Wharf and Heathrow Airport both quick and efficient.

**Flat 2.9,
86 - 92 Kensington Garden Square, W2**

Approx. Gross Internal Area *
466 Ft² - 43.29 M²



Council Tax Band **D** EPC Rating **C**



24 Bristol Gardens
London
W9 2JQ
hello@draperlondon.com
0203 143 1900