



Brand Street, SE10

£825,000

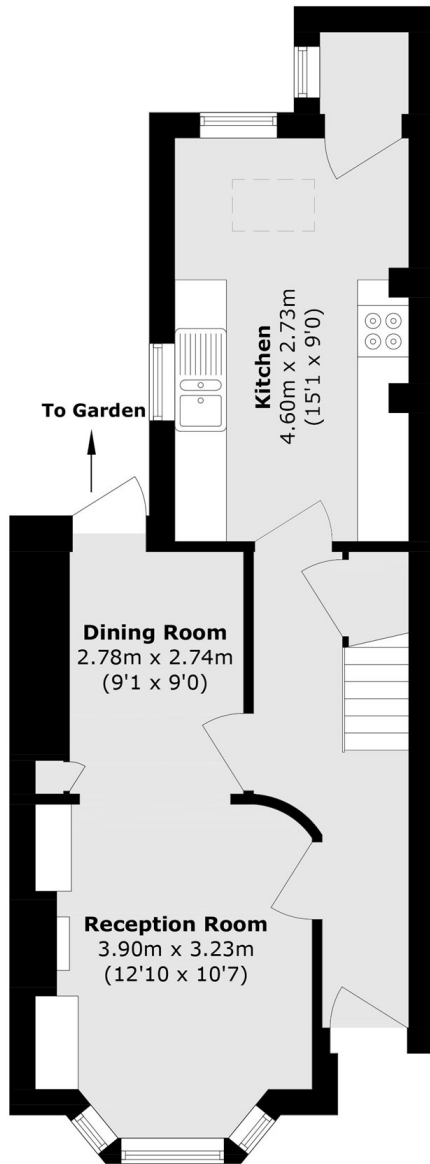
An beautifully presented two bedroom period family home that has been restored and renovated to a high standard boasting period features throughout. Situated in prime West Greenwich, a viewing is highly recommended.

Brand Street is one of West Greenwich's most sought after roads, within moments of Greenwich Royal Park and Greenwich mainline and DLR station providing easy access to Canary Wharf, the City and beyond. Royal Hill with its eclectic mix of independent shops, cafes, restaurants and pubs is a short stroll around the corner.

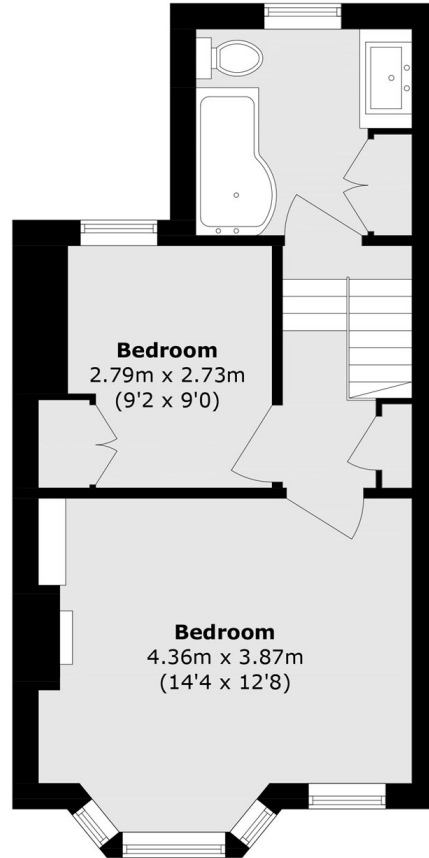
Features

- Period Features
- Two Bedrooms
- Sought After Location
- No Work Required
- Freehold House
- Upstairs Bathroom

Brand Street,
London, SE10



Ground Floor



First Floor

Total area (approx.): 76.9 sq. m (827.7 sq. ft)