



The Waterfront, SG14 1SD
Hertford





www.foxconnor.co.uk

The Waterfront, SG14 1SD

Rent includes Wifi & permit parking!

Available 1st July! Unlike any other apartment in The Waterfront! A stylish and well presented rental property set in a sought-after riverside development close to the town centre, offered furnished (without beds)

This modern property offers a bright and spacious living accommodation, featuring a contemporary open plan fitted kitchen, comfortable reception area which overlooks the river, generously sized bedrooms - both doubles and a sleek main bathroom and en suite.

Residents can enjoy the attractive waterfront setting while benefiting from excellent access to Hertford's shops, restaurants, green spaces and transport links, including nearby rail stations with connections into London.

Ideal for professionals, couples, or small families seeking a convenient and high-quality home in a desirable Hertford location.

Enquire today to book into our open day!

£1,575



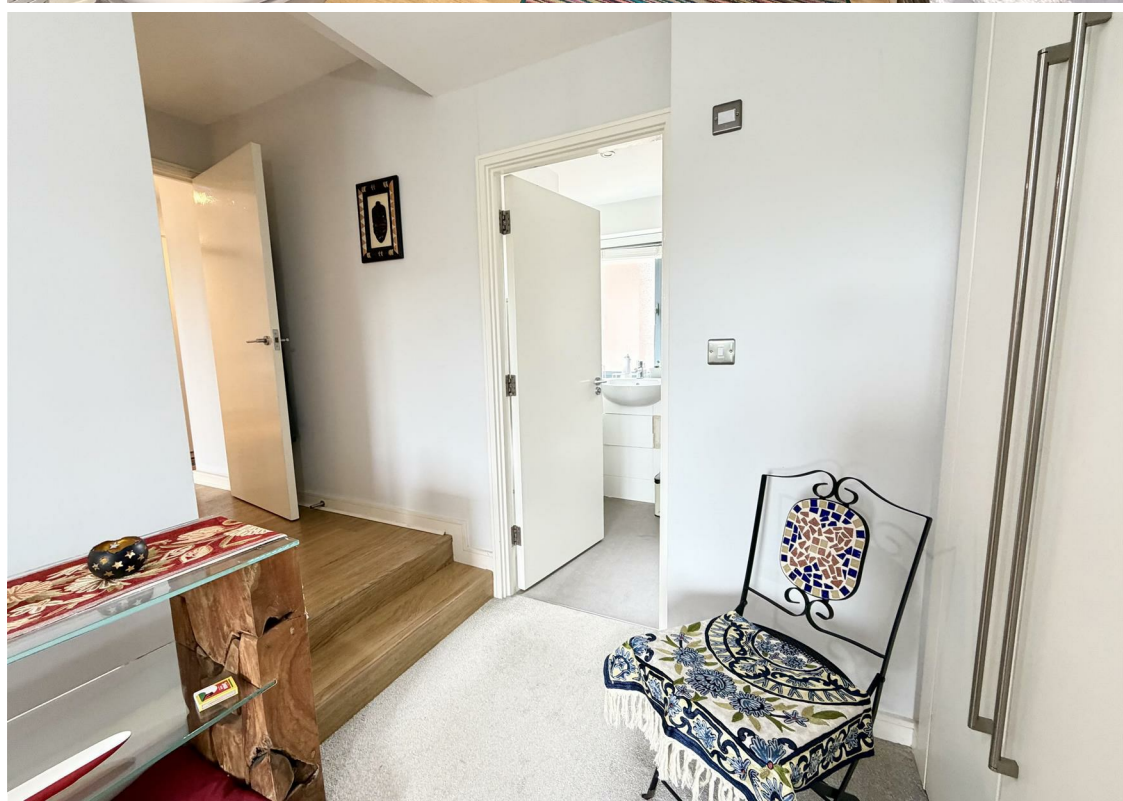
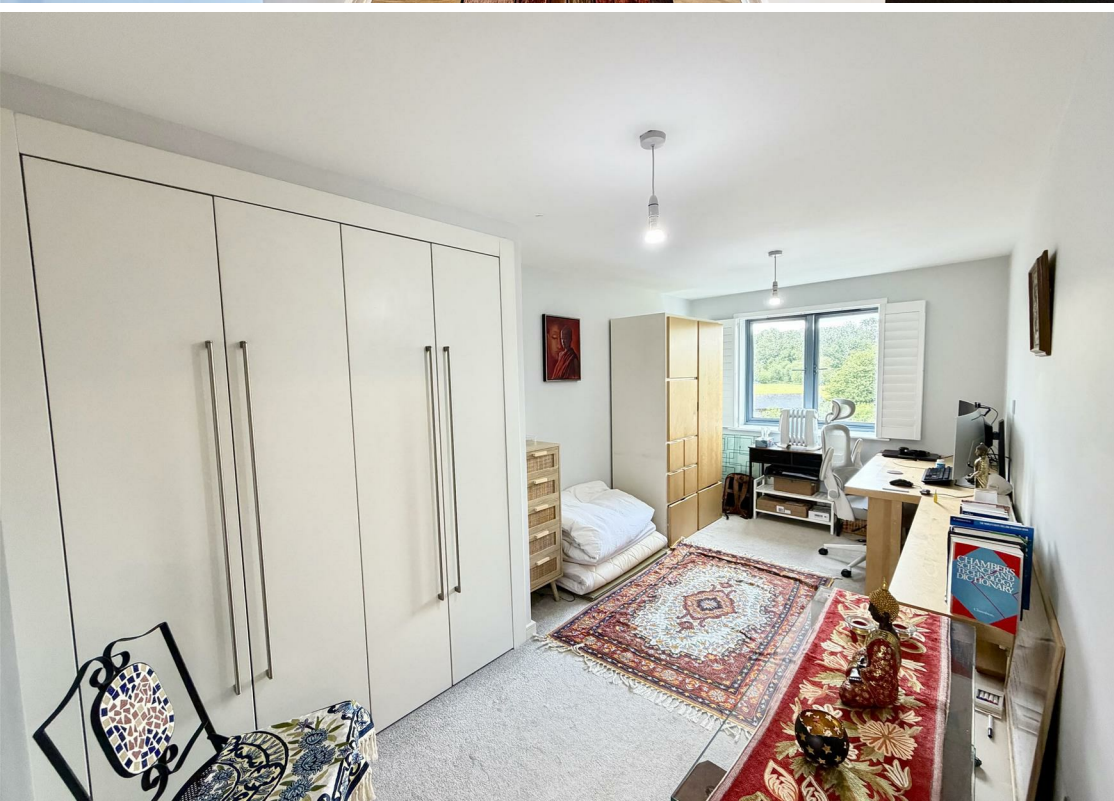
- Includes Wifi & parking permit
- Over looking the river
- Moments from Hertford East station & Town centre
- Unique layout

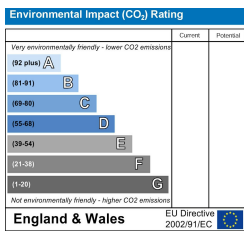
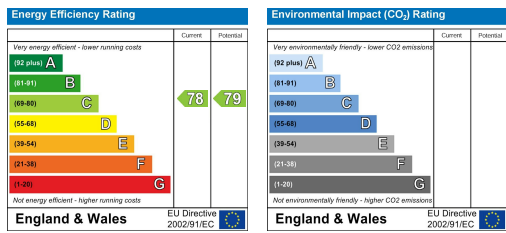
- Available 1st July
- En suite
- Furnished (without beds) - Status flexible











THE PROPERTY MISDESCRIPTIONS ACT 1991. The agent has not tested any apparatus, equipment, fixtures or services and so cannot verify that they are in working order, or fit for the purpose. References to the Tenure of a property are based on information supplied by the vendor. The agent has not had sight of the Title documents. A buyer is advised to obtain verification from their Solicitor or Surveyor. Note: These details are correct at time of going to press.



28 Maidenhead Street, Hertford,
Hertfordshire, SG14 1DR
T: 01992 586570
E:
www.kings-group.net

