



## Flat 2, 51 Lime Grove, Stapleford, Nottingham, NG9 7GF

**£750 PCM**

- Stapleford
- One bedroom
- One reception room
- Three-piece bathroom suite
- Council tax - A
- First floor flat
- One bathroom
- Fitted kitchen
- Street parking available
- EPC - D

# 51 Lime Grove, Nottingham NG9 7GF

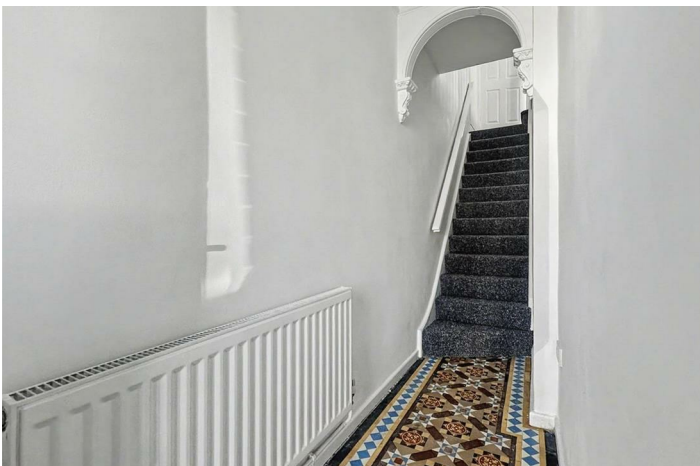
\*\*\* SPACIOUS ONE BEDROOM FIRST FLOOR FLAT ON LIME GROVE, STAPLEFORD \*\*\*

Robert Ellis are delighted to present to the market this well-presented and spacious one-bedroom first floor flat, situated in a popular residential location. Close to Stapleford town centre with excellent transport links, ideally located within easy reach of local shops, amenities, Beeston, Nottingham city centre, the A52 and M1 motorway.

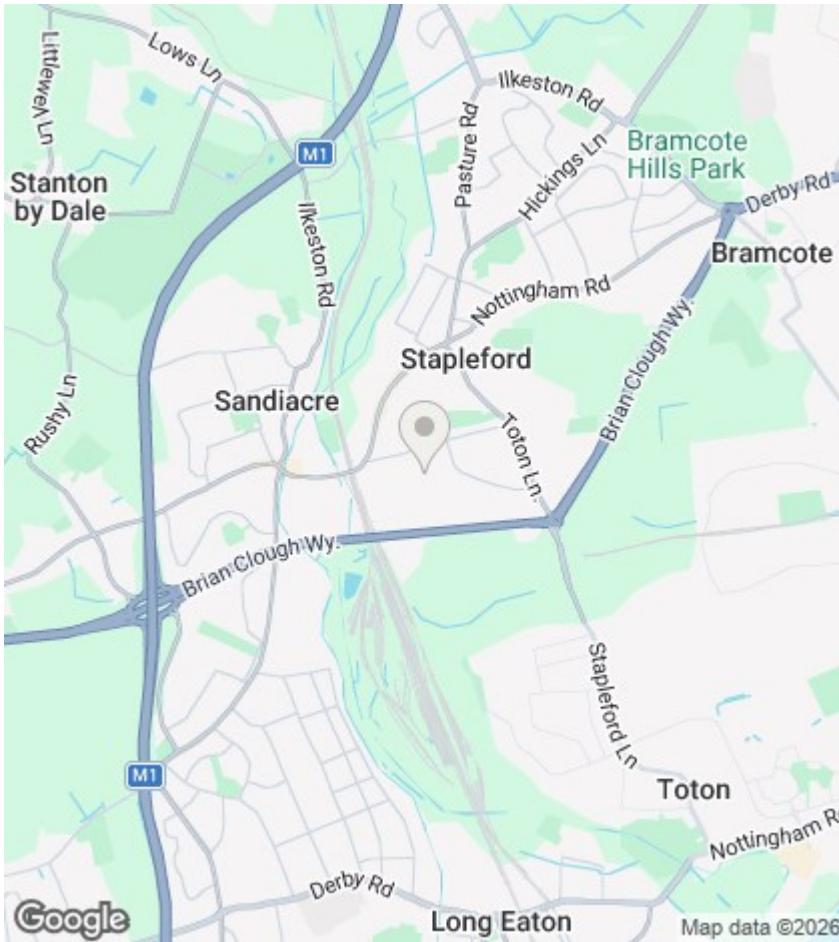
The accommodation is briefly comprised of: welcoming entrance hallway with staircase leading to the first-floor landing, generous double bedroom, modern fitted kitchen, large lounge / living room, and a three-piece bathroom suite. The property is carpeted throughout (with the exception of kitchen and bathroom), and features gas central heating and double-glazed windows.



Council Tax Band: A







## Directions

## Viewings

Viewings by arrangement only. Call 0115 9496740 to make an appointment.

## EPC Rating:

C

