



WETHERELL
MAYFAIR'S FINEST PROPERTIES



Upper Grosvenor Street, W1K

£4,117 PCM

A newly redecorated two bedroom apartment on the first floor with a large reception room located within a popular 24 hour portered building in the heart of Mayfair.

Situated moments from Hyde Park and retaining period features this two bedroom apartment has large windows offering natural light throughout and ideal for a single professional or couple.

The principal bedroom has floor to ceiling built-in storage and the large reception room is ideal for hosting with a separate kitchen space.

In addition, the apartment has access to a communal garden and a 24 hour portage service.

Upper Grosvenor Street is one of the area's most sought after addresses and is within short walking distance of the surrounding boutiques and restaurants of Mayfair. Nearby underground stations include Bond Street (Central, Elizabeth and Jubilee lines) and Marble Arch (Central Line).

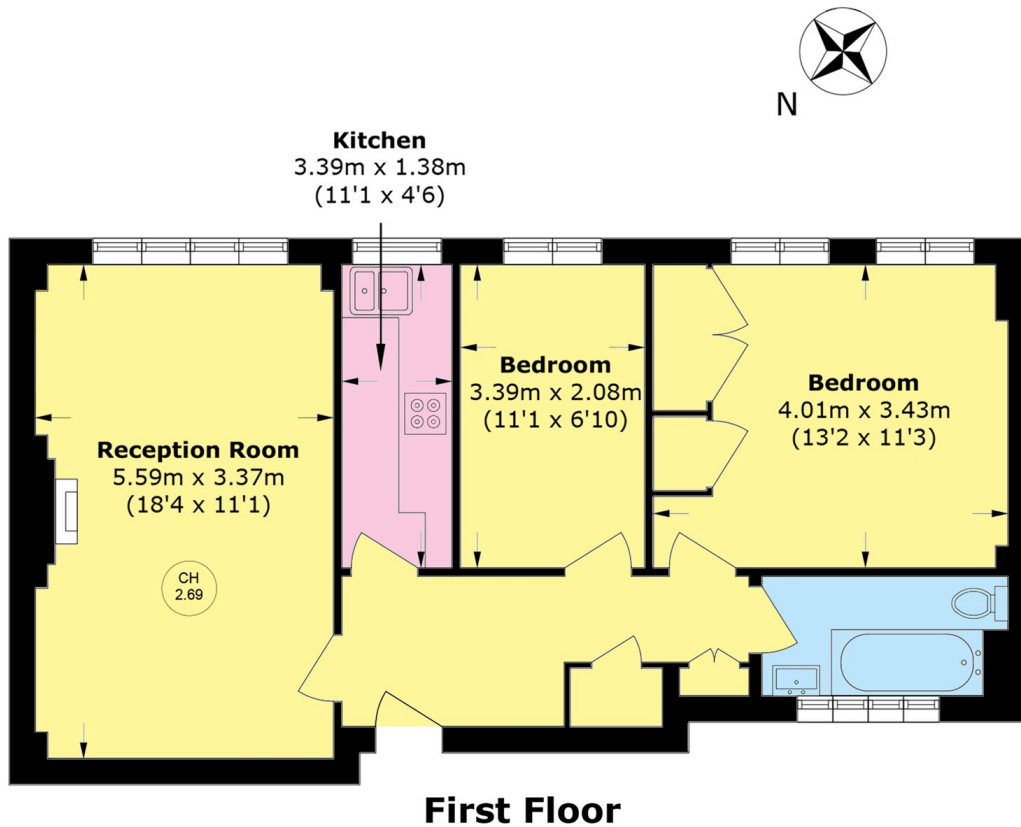


FEATURES

- Two Bedrooms • One Bathroom • 24 Hour Porter • Newly Redecorated • Lift Access • Communal Gardens •



Upper Grosvenor Street,
London, W1K



First Floor

Total Area (approx.): 57.3 sq. m (616.7 sq. ft)



WETHERELL
MAYFAIR'S FINEST PROPERTIES

102 Mount Street,
London, W1K 2TH

T: 020 7529 5588
E: rentals@wetherell.co.uk

We aim to make our particulars both accurate and reliable. However they are not guaranteed; nor do they form part of an offer or contract. If you require clarification on any points then please contact us, especially if you're traveling some distance to view. Please note that appliances and heating systems have not been tested and therefore no warranties can be given as to their working order.



wetherell.co.uk