

Homefield Road, Radlett

Asking Price £1,650,000 (Freehold)



An exceptional two/three-bedroom detached bungalow offering over 1,700 sq. ft. of versatile living space, perfectly positioned on one of Radlett's most prestigious and sought-after roads. Tucked away in a peaceful and highly desirable position on Homefield Road, this beautifully proportioned single-story home combines spacious interiors with an enviable location. The property offers an excellent opportunity for those looking to downsize without compromising on space.

Upon arrival, a practical entrance porch opens into a welcoming and spacious reception hallway. This central hub connects seamlessly to a formal dining area, which guides you into the main living zones of the home. At the heart of the house is a substantial open-plan living and dining room. This impressive room leads directly into a sunlit conservatory, framing beautiful views and offering direct access to the private, south-facing rear garden. Adjacent to the living areas is a well-equipped, fully fitted kitchen complete with integrated appliances, including a built-in oven, gas hob, and dishwasher.

The exterior of the property is equally impressive. The front features a sweeping carriage driveway with inset floor lighting, providing parking for multiple vehicles alongside access to a secure single garage. To the rear sits a stunning, newly landscaped secluded south-facing garden.

01923 852434
www.village-estates.co.uk

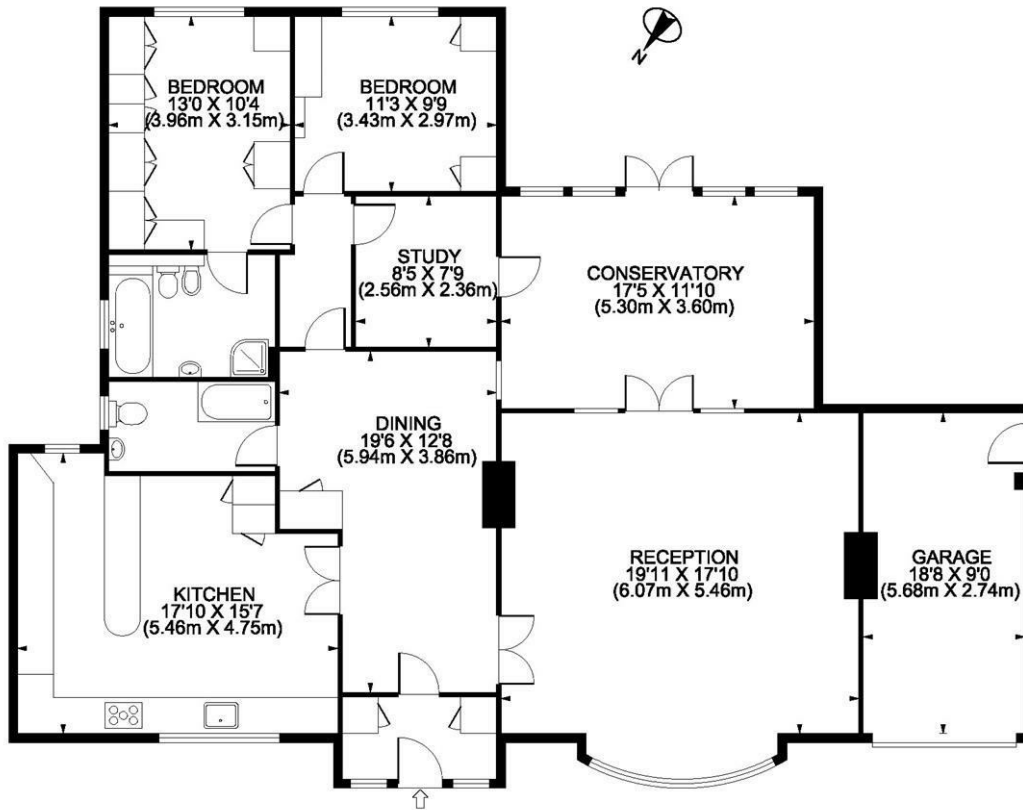


Village Estates
70d Watling Street, Radlett
Herts WD7 7NP

Important Note: These particulars do not form part of any contract. All measurements are approximate and should not be relied upon. All prices quoted are strictly subject to contract.







GROUND FLOOR

Homefield Road, WD7
 Gross Internal Area 1723 sq ft 160 sq meters
 Property360. co.uk 2009 REF : HIP003494



Energy Efficiency Rating		Current	Potential
Very energy efficient - lower running costs			
(92 plus)	A		
(81-91)	B		83
(69-80)	C		
(55-68)	D	67	
(39-54)	E		
(21-38)	F		
(1-20)	G		
Not energy efficient - higher running costs			
England & Wales		EU Directive 2002/91/EC	