



Beaufort Close, Norwich NR6 6GA

welcome to

Beaufort Close, Norwich

An extended 4-bedroom link detached house situated at the end of a cul de sac. The property consists of 4 bedrooms, master with ensuite, WC, kitchen, lounge, snug and family bathroom.



Accommodation

William H Brown are pleased to present this extended 4-bedroom link detached house situated at the end of a cul de sac. The property consists of 4 bedrooms, master with ensuite, WC, kitchen, lounge, snug and family bathroom. Outside the property benefits from a corner plot with off road parking.

Entrance Hall

Stairs rising to first floor, radiator and storage cupboard.

WC

Suite comprising low level WC, pedestal wash hand basin and radiator, UPVC double glazed obscure glass window to side

Kitchen

UPVC Double glazed window to front, range of wall and base units with an inset half bowl sink with mixer tap over, electric oven, hob with extractor over, space and plumbing for washing machine & dishwasher, space for fridge freezer, radiator and boiler for the heating system

Lounge

Under stairs cupboard and radiator, UPVC double glazed window to the front aspect

Snug

UPVC Double glazed window to rear, UPVC Double glazed French doors with UPVC side panel to rear garden, two double glazed velux windows and radiator.

First Floor Landing

Stairs from ground floor, radiator, loft access with drop down ladder and built in storage cupboard.

Bedroom 1

UPVC Double glazed window to front, radiator, built in wardrobes and door to:

Ensuite

Suite comprising shower cubicle, low level WC, heated towel rail and wash hand basin, UPVC double glazed obscure glass window to side

Bedroom 2

UPVC Double glazed window to front, velux double glazed window to rear, radiator and built in wardrobe

Bedroom 3

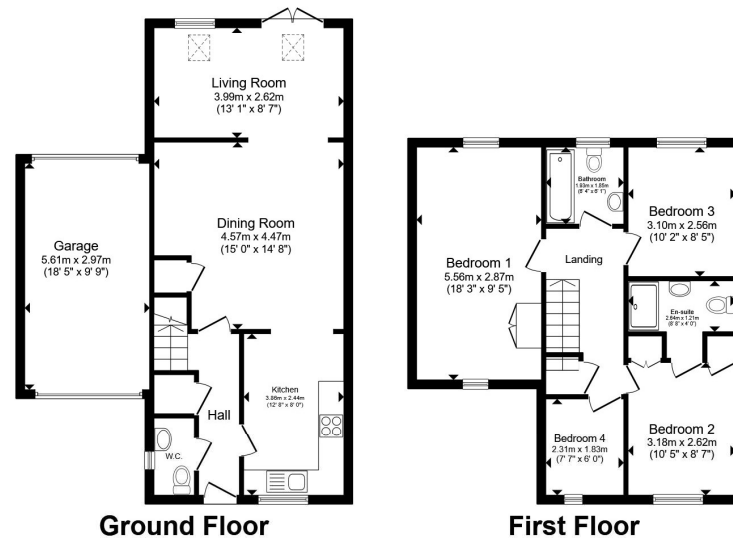
UPVC Double glazed window to front and radiator.

Family Bathroom

Suite comprising panelled bath with mains powered shower over, low level WC, pedestal wash hand basin and radiator, UPVC double glazed obscure glass window to rear.

Garage

Of brick-built construction with up and over door.



Total floor area 121.5 m² (1,308 sq.ft.) approx

This floor plan is for illustrative purposes only; it is not drawn to scale. Any measurements, floor areas (including any total floor area), openings and orientation are approximate. No details are guaranteed, they cannot be relied upon for any purpose and they do not form part of any agreement. No liability is taken for any error, omission or misstatement. A party must rely upon its own inspection(s). Powered by www.propertybox.io


william
h brown



view this property online williamhbrown.co.uk/Property/HEL103463



welcome to

Beaufort Close, Norwich

- Four bedroom link-detached family home
- Two reception rooms
- Gas fired radiator central heating
- Master bedroom with ensuite shower room
- Single garage with off road parking

Tenure: Freehold EPC Rating: Awaiting
Council Tax Band: D

guide price

£310,000



Please note the marker reflects the postcode not the actual property

view this property online williamhbrown.co.uk/Property/HEL103463



Property Ref:
HEL103463 - 0003

1. MONEY LAUNDERING REGULATIONS Intending purchasers will be asked to produce identification documentation at a later stage and we would ask for your co-operation in order that there is no delay in agreeing the sale. 2. These particulars do not constitute part or all of an offer or contract. 3. The measurements indicated are supplied for guidance only and as such must be considered incorrect. Potential buyers are advised to recheck measurements before committing to any expense. 4. We have not tested any apparatus, equipment, fixtures or services and it is in the buyers interest to check the working condition of any appliances. 5. Where an EPC, or a Home Report (Scotland only) is held for this property, it is available for inspection at the branch by appointment. If you require a printed version of a Home Report, you will need to pay a reasonable production charge reflecting printing and other costs. 6. We are not able to offer an opinion either written or verbal on the content of these reports and this must be obtained from your legal representative. 7. Whilst we take care in preparing these reports, a buyer should ensure that his/her legal representative confirms as soon as possible all matters relating to title including the extent and boundaries of the property and other important matters before exchange of contracts.

William H Brown is a trading name of Sequence (UK) Limited which is registered in England and Wales under company number 4268443, Registered Office is Cumbria House, 16-20 Hockliffe Street, Leighton Buzzard, Bedfordshire, LU7 1GN. VAT Registration Number is 500 2481 05.



william h brown



01603 487888



hellesdon@williamhbrown.co.uk



303 Reepham Road, Hellesdon, NORWICH,
Norfolk, NR6 5AD



williamhbrown.co.uk