



RESIDE

MANCHESTER



A507 South Tower Deansgate Square

9 Owen Street, Manchester, M15 4TN

£3,100 Per Month



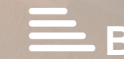
3



2



1



B

A507 South Tower Deansgate

9 Owen Street, Manchester, M15 4TN

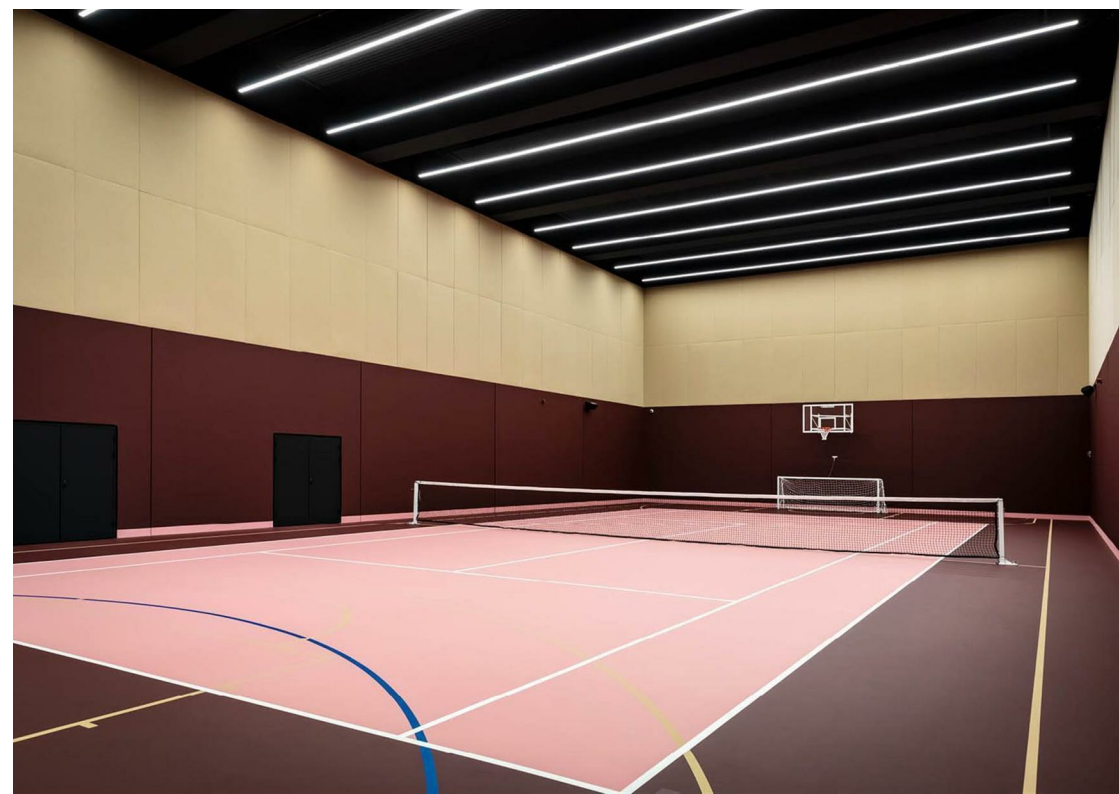
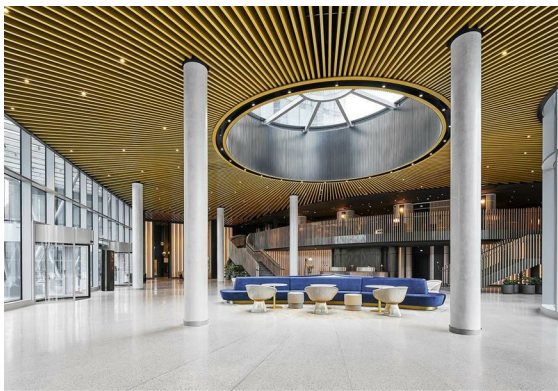
This bespoke 3 bedroom apartment spanning 1,131 sq.ft is located on the 5th floor of South Tower, part of the Deansgate Square development.

The development includes state of the art facilities which are second to none, including 24 hour concierge service, gymnasium, a 20m swimming pool; a vitality pool; a sports hall for 5-a-side football; a spin studio; and a residents' roof terrace, just to list a few! Access to these are all included in the rent.

Situated just a brief 5-minute stroll from the vibrant hubs of Deansgate and Spinningfield, this location offers not just a home but an experience, with a wide range of bars and entertainment services .

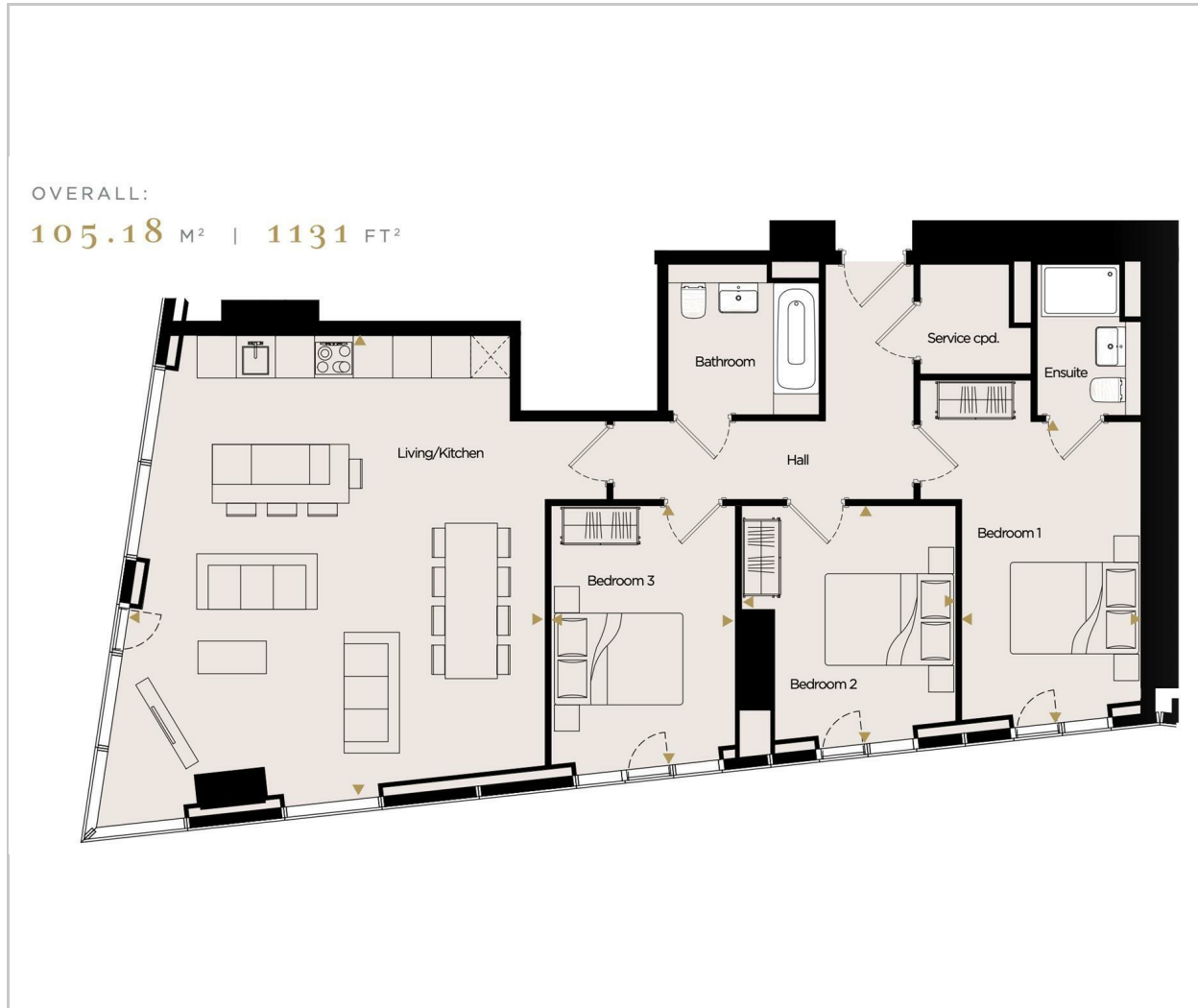
This exquisite apartment, offered furnished throughout and includes a secure parking space is available to rent from 1st July 2026.

- Three Double Bedrooms
- Two Bathrooms
- Secure Parking Included
- Furnished Throughout
- Available 1st July
- EPC Rating B
- 24 Hour Concierge
- Residents Pool, Gym, Yoga Studio & More
- Residents Rooftop Garden
- Co Working Spaces & Bookable Dinning Rooms





Floor Plan



Viewing

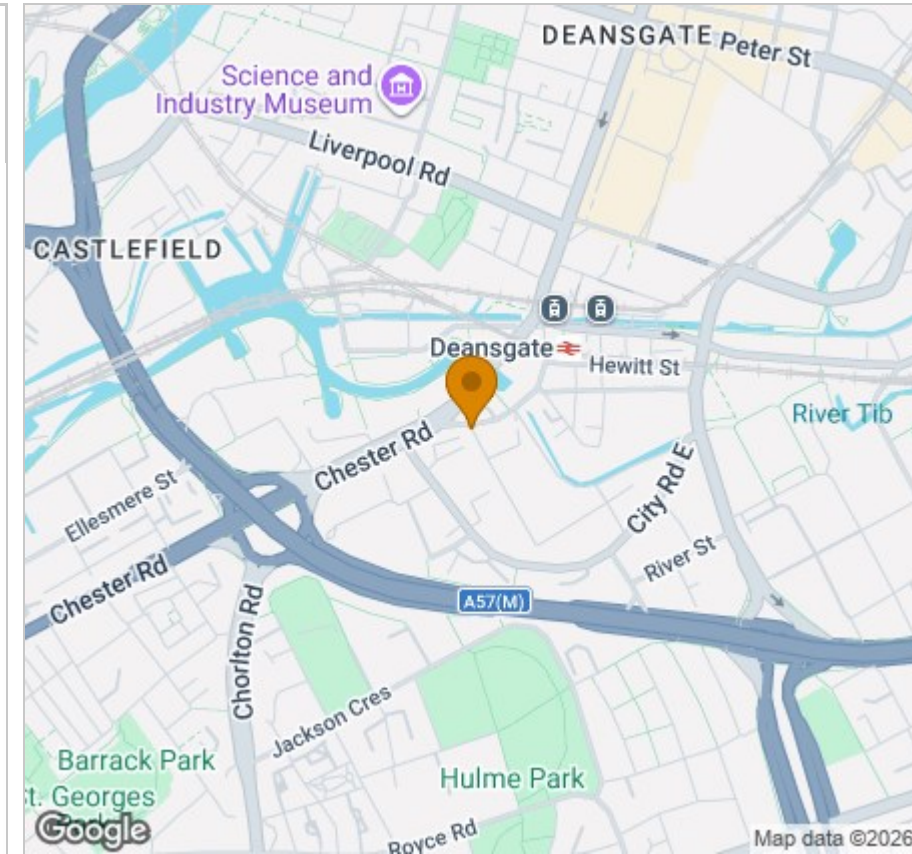
Please contact our Reside Manchester Office on 0161 837 2840 if you wish to arrange a viewing appointment for this property or require further information.

These particulars, whilst believed to be accurate are set out as a general outline only for guidance and do not constitute any part of an offer or contract. Intending purchasers should not rely on them as statements of representation of fact, but must satisfy themselves by inspection or otherwise as to their accuracy. No person in this firm's employment has the authority to make or give any representation or warranty in respect of the property.

4 Jordan Street, Manchester, Greater Manchester, M15 4PY

Tel: 0161 837 2840 Email: info@residemanchester.com www.reside-property.com

Area Map



Energy Efficiency Graph

