



Aboyne Road, SW17

£575,000

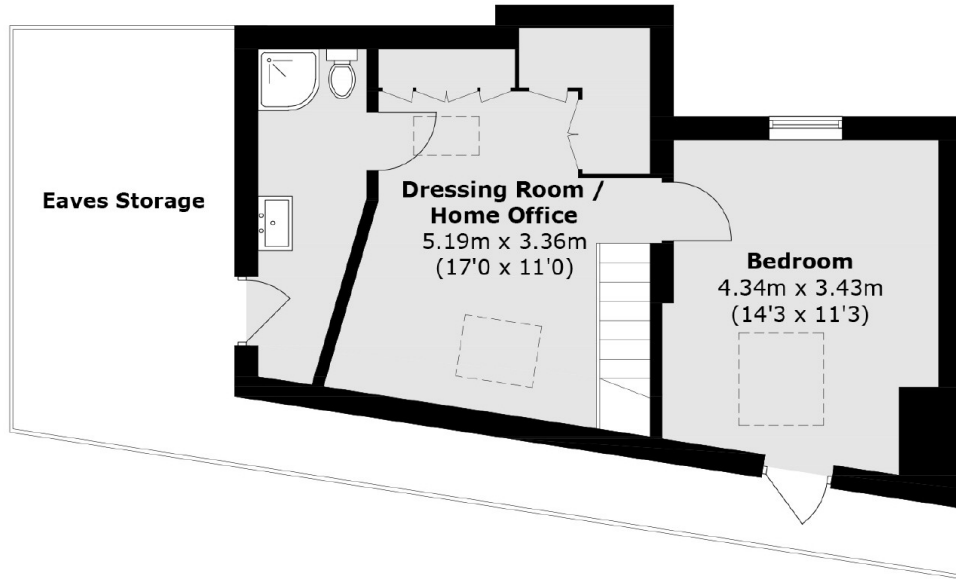
A superb example of a modern apartment that offers exceptional accommodation with a stunning open-plan kitchen/reception room wonderfully furnished with a comfortable seating and dining area, three double bedrooms, two bathrooms, and substantial storage space including eaves storage. The property is well located for the green spaces of Garratt Green.

Aboyne Road is conveniently located with excellent proximity to both Tooting and Earsfield town centres, with its vast array of shops, bars and amenities only a short stroll away. The green open spaces of Wimbledon Park, Garratt Green, the river Wandle and Wandsworth Common are all within easy reach.

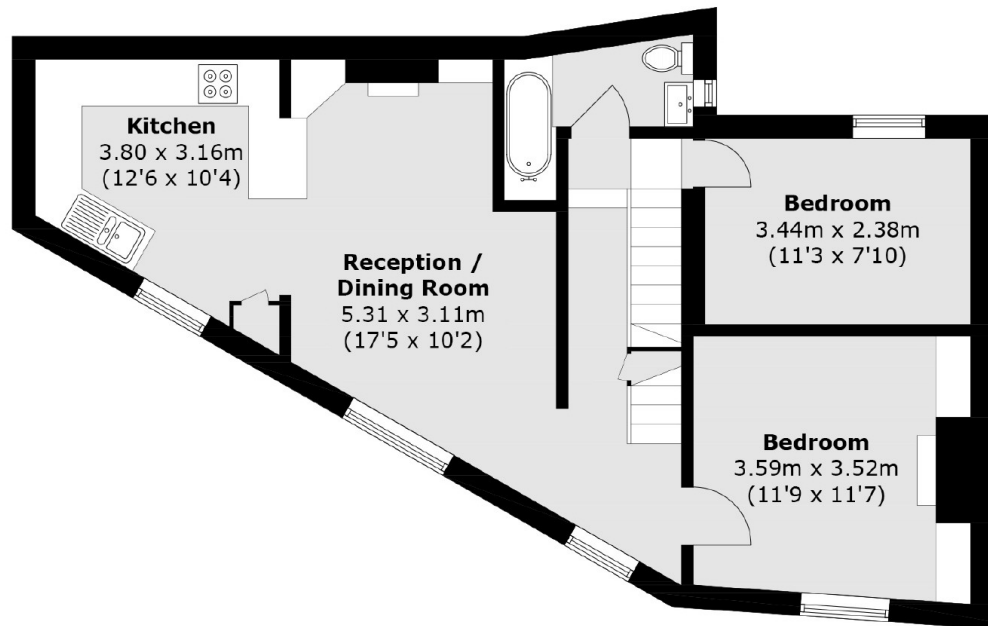
Features

- Three Double Bedrooms
- Two Bathrooms
- Modern Apartment
- Integrated Kitchen
- Open-Plan Kitchen/Reception Room
- Close Proximity of Garratt Green

Aboyne Road, London, SW17



Second Floor



Ground Floor

First Floor

Total area (approx.): 100.2 sq. m (1,078.4 sq. ft)
(Excluding Eaves Storage)