



Clabon Mews
Knightsbridge, SW1X

CHESTERTONS





Set within a peaceful and highly sought-after mews, this exceptional two-bedroom, two-bathroom residence offers an impressive 1,927 sq ft of beautifully appointed living accommodation arranged across three floors.

Finished to an exacting standard throughout, the property seamlessly combines contemporary design with practical living. The spacious layout provides an abundance of natural light and generous proportions, creating an inviting and versatile home ideally suited to modern lifestyles.

The accommodation comprises two well-proportioned bedrooms, two stylish bathrooms, and expansive living and entertaining spaces, all presented in immaculate condition with high-quality finishes throughout. The thoughtfully designed interiors offer a sophisticated yet comfortable environment, ready for immediate occupation.

Further benefits include a private garage, providing valuable secure parking and additional storage, while the quiet mews setting offers a rare sense of tranquillity and privacy, all within easy reach of local amenities and transport connections.

A superb opportunity to acquire a substantial and impeccably presented home in an exclusive and peaceful location.

£9,316.67 pcm

Additional tenant charges apply (fees apply to non-AST tenancies only)

Tenancy Agreement Fee: £300

References per Tenant/Guarantor: £60

Inventory check (approx. £100 – £250 inc. VAT)

chestertons.co.uk/property-to-rent/applicable-fees

Score	Energy rating	Current	Potential
92+	A		
81-91	B		
69-80	C		
55-68	D		
39-54	E		
21-38	F		
1-20	G		
		81 B	87 B

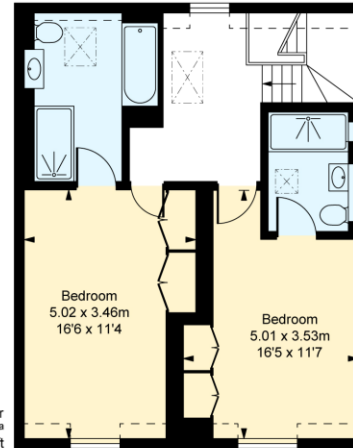
Minimum Term: 12 months
Deposit Required: 6 weeks
Local Authority: Kensington and Chelsea
Council Tax Band: G
EPC Rating: B
Unfurnished

Chestertons Knightsbridge & Belgravia Lettings

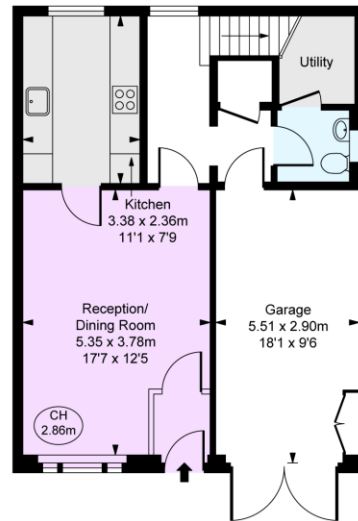
31 Lowndes Street
 London
 SW1X 9HX

knightsbridgelettingsusers@chestertons.co.uk
 02072353530
chestertons.co.uk

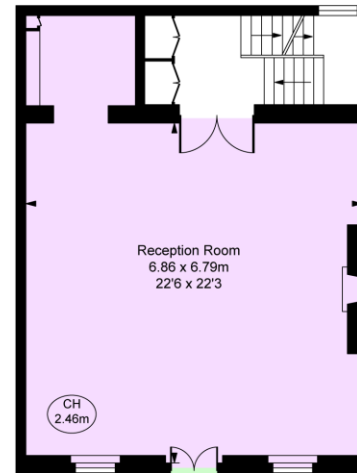
Clabon Mews, SW1X
 Approximate Gross Internal Area
179.06 sq m / 1,927 sq ft
 (Including restricted height
 under 1.5m (- - - - -))
 (CH = Ceiling Heights)



Second Floor
 Approximate Gross Internal Area
 57.90 sq m / 623 sq ft



Ground Floor
 Approximate Gross Internal Area
 60.69 sq m / 653 sq ft



First Floor
 Approximate Gross Internal Area
 60.47 sq m / 651 sq ft

This plan is not to scale. It is for guidance and not for valuation purposes.
 All measurements and areas are approximate only, and have been prepared in accordance with the current edition of the RICS Code of Measuring Practice.
 © Fulham Performance

Chesterton UK Services Limited trading as Chestertons for themselves and for the vendor of this property whose agents they are, give notice that (i) these particulars do not constitute any part of an offer or contract, (ii) all statements contained within these particulars are made without responsibility on the part of Chestertons or the vendor, (iii) whilst made in good faith, none of the statements contained within these particulars are to be relied upon as a statement or representation of fact, (iv) any intending purchasers must satisfy themselves by inspection or otherwise as to the correctness of each of the statements contained within these particulars, (v) the vendor does not make or give either Chestertons or any person in their employment any authority to make or give representation or warranty whatsoever in relation to this property. Wide angle lenses may be used. ©Copyright Chestertons | Chesterton Global Ltd | Registered Office 5th Floor, The Lantern, 75 Hampstead Road, London, NW1 2PL Registered Company Number 05334580.



This paper is
 100% recyclable