



gibsonhoney

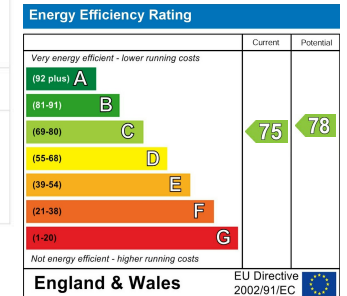
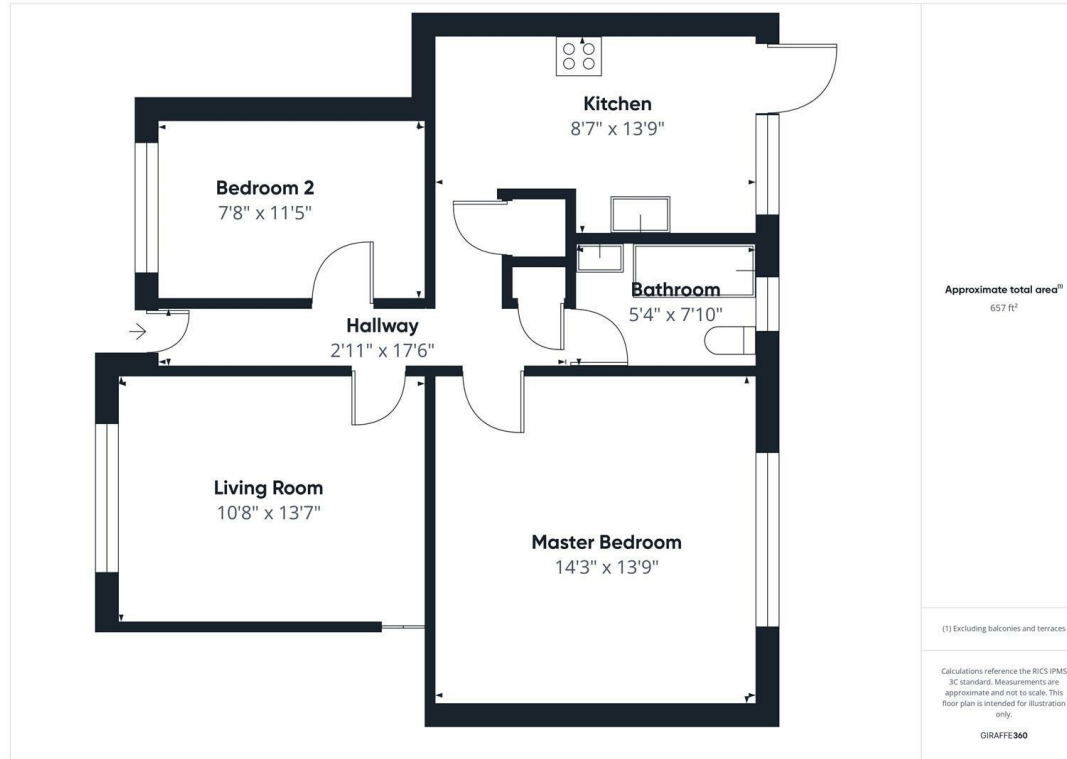


Rydal Way, Middlesex, HA4 0RU
£1,775 PCM



gibsonhoney

This modern two-bedroom ground floor flat offers modern, comfortable living in a quiet residential setting, just moments from Ruislip's excellent transport links and local amenities. The property features a bright and spacious living room, a modern fitted kitchen, two well-sized bedrooms, and a family bathroom. With neutral décor throughout, it's ready for you to move straight in and make your own. A real highlight is the private rear garden. Located within easy reach of South Ruislip and Ruislip Manor Underground stations, local shops, cafes, and green spaces, this home offers both convenience and comfort.



You may download, store and use the material for your own personal use and research. You may not republish, retransmit, redistribute or otherwise make the material available to any party or make the same available on any website. These particulars, whilst believed to be accurate are set out as a general outline only for guidance and do not constitute any part of an offer or contract. Intending purchasers should not rely on them as statements or representation of fact, but must satisfy themselves by inspection or otherwise as to their accuracy. No person in this firm's employment has the authority to make or give any representation or warranty in respect of the property.

92 High Street, Ruislip, Middlesex, HA4 8LS

T: 01895 625999

lettings@gibsonhoney.co.uk

www.gibsonhoney.co.uk

