



## Streatham High Road, SW16

£295,000

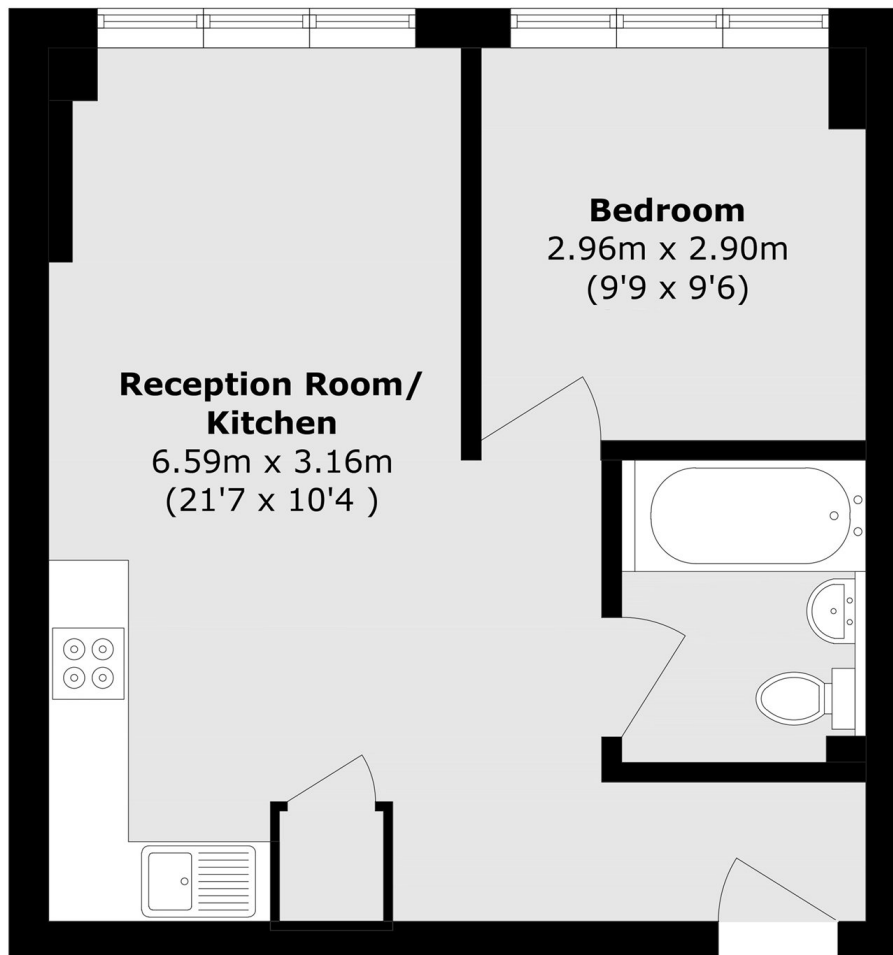
This well presented one double bedroom home is offered with no onward chain, making it an ideal first time purchase or investment opportunity. Featuring a modern fitted kitchen and stylish open plan living accommodation, the property offers a bright and practical living space throughout. The spacious double bedroom provides comfortable accommodation, while the convenient location places you within easy reach of local shops, amenities, and the train station, making it perfect for commuters.

This property is conveniently located near Streatham Mainline Train Station, offering excellent access into the City. All essential amenities are within easy reach, including several large supermarkets, a gym, and a leisure centre. Streatham High Road is just a short walk away and features a wide variety of restaurants, shops, and other local conveniences.

### Features

- No Onward Chain
- Modern Kitchen
- One Double Bedroom
- Convenient Location
- Open Plan Living/Kitchen
- Near Shops/Train Station

# Streatham High Road, London, SW16



Total area (approx.): 40.5 sq. m (435.9 sq. ft)