



5 Norfolk Gardens, Huthwaite, NG17 2SU

Guide Price £230,000



5 Norfolk Gardens

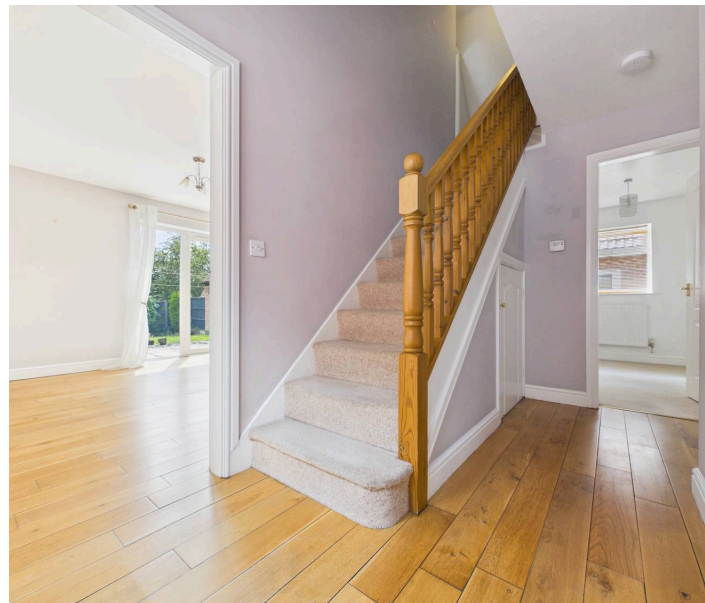
Huthwaite, Sutton-In-Ashfield

Council Tax band: C

Tenure: Freehold

EPC Energy Efficiency Rating: C

- Spacious dormer bungalow sold with no upward chain
- Three bedrooms, two first floor double bedrooms and ground floor third bedroom
- Entrance hall with engineered Oak flooring
- Spacious lounge with engineered Oak flooring and French doors to the rear garden
- Spacious dining kitchen with tiled flooring, kitchen area with Oak finish panelled units and integrated double oven, hob and extractor
- Ground floor shower room/Wc with tiled flooring and corner shower cubicle with mains-fed shower
- First floor bathroom/Wc with white suite and mixer shower
- Combination gas central heating, UPVC double glazing
- Tandem driveway provides off road parking, garage with pedestrian access door
- Enclosed lawned rear garden with patio area, situated along a private driveway with no through road





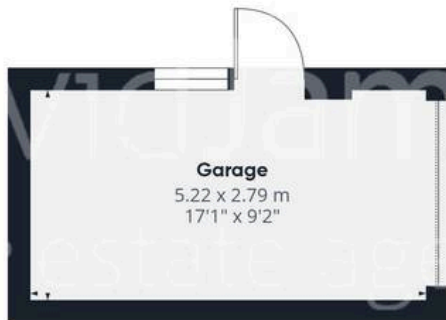




Floor 0 Building 1



Floor 1 Building 1



Floor 0 Building 2

Approximate total area⁽¹⁾

116.3 m²
1251 ft²

Reduced headroom

5.7 m²
61 ft²

(1) Excluding balconies and terraces

Reduced headroom

----- Below 1.5 m/5 ft

Calculations reference the RICS IPMS 3C standard. Measurements are approximate and not to scale. This floor plan is intended for illustration only.

GIRAFFE360



David James Estate Agents

43 Forest Street, Sutton-in-Ashfield - NG17 1DA

01623 554084 • sutton@david-james.com • www.david-james.com

These particulars are produced in good faith and are set out as a general guide only. Measurements are approximate and floor plans are for illustrative purposes only. Services have not been tested. We have established professional relationships with third-party suppliers for the provision of services to Clients, details of which can be found on the property listing page on our website.