



MARCO HARRIS
THE PROPERTY PROFESSIONALS

Downscroft Gardens, Hedge End, Southampton, SO30

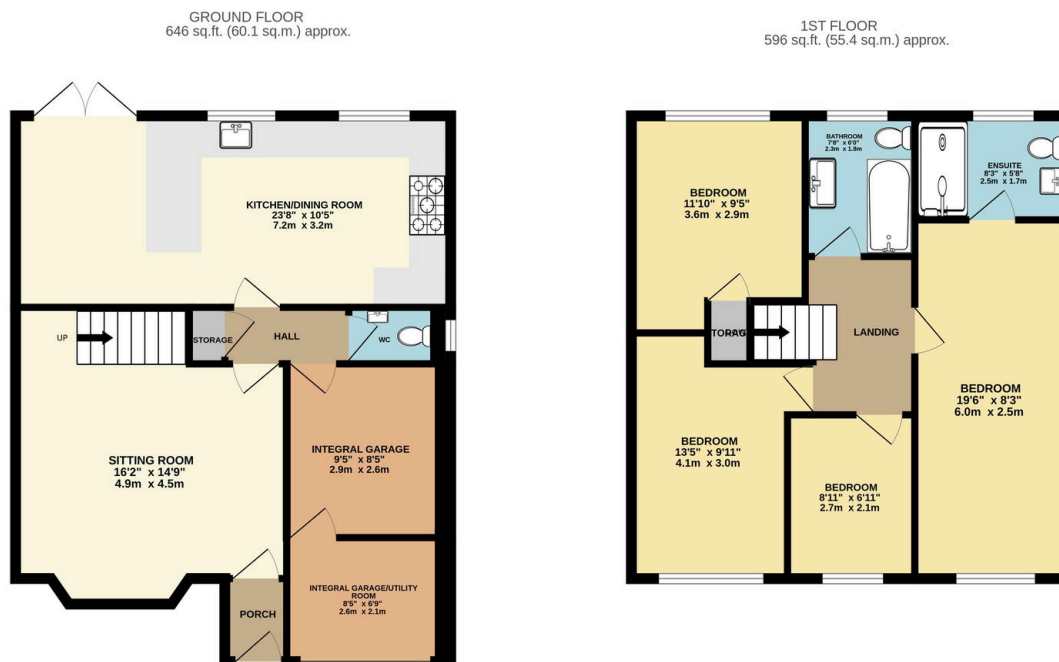
Guide Price £490,000

4 2 1





- Extended Detached Family Home
- Spacious Layout Offering Versatile Living Accommodation
- Bright & Airy Sitting Room With Characterful Bay Window
- Partially Converted Integral Garage Providing Utility Space Or Home Office Potential
- Easy Access To Motorway Links, Bus Stops & Hedge End Train Station
- Four Well Proportioned Bedrooms
- Open Plan Kitchen/Dining Area Ideal For Modern Family Living & Entertaining
- Principal Bedroom With Stylish En-suite Shower Room
- South Facing, Landscaped Rear Garden Offering Privacy & Multiple Seating Areas
- Walking Distance To Hedge End Retail Park, Hedge End Village & Multiple Primary & Secondary Schools



TOTAL FLOOR AREA: 1243 sq.ft. (115.5 sq.m.) approx.
Whilst every attempt has been made to ensure the accuracy of the floorplan contained here, measurements of doors, windows, rooms and any other items are approximate and no responsibility is taken for any error, omission or mis-statement. This plan is for illustrative purposes only and should be used as such by any prospective purchaser. The services, systems and appliances shown have not been tested and no guarantee as to their operability or efficiency can be given.
Made with Metropix ©2025

Set on the highly desirable Downscroft Gardens in Hedge End, this spacious four-bedroom detached home combines modern living with family-friendly space. Featuring a bright open-plan kitchen and dining area, a welcoming sitting room, and a south-facing landscaped garden, it's perfect for relaxing and entertaining. The principal suite with ensuite, flexible garage/office space, and versatile bedrooms make this an ideal family home.