



## STAFFORD CRIPPS HOUSE, E2

£2,750 PER MONTH

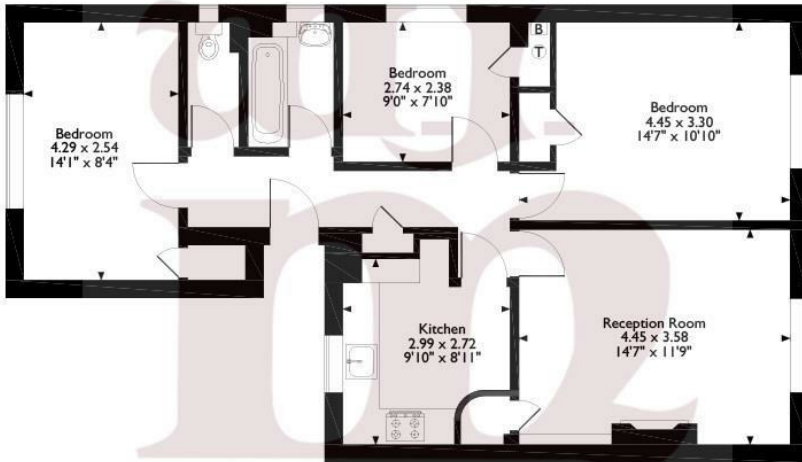
- Three Double Bedrooms
- 782sq Ft
- Close To Bethnal Green Tube
- Top Floor
- Built In 1953
- Fully Furnished

wj.  
meade



Approximate Gross Internal Area  
73 Sq M/782 Sq Ft

est. 1953



Please note that the location of doors, windows and other items are approximate and this floorplan is to be used for illustrative purposes only. Unauthorized reproduction is prohibited.



WJ Meade are delighted to offer this well presented top floor flat in a three storey block containing just nine properties. Comprising three good size bedrooms, west facing reception room, separate large fitted kitchen dining area, modern bathroom suite with modern decor throughout. The property enjoys good natural light and is situated close to Bethnal Green underground station with Victoria Park and the amenities of Roman Road nearby. Ideal for professional sharers, available mid April.

Service charge £n/a  
Ground rent £n/a  
Reserve fund £n/a  
n/a years lease  
Council tax band C  
Current EPC Rating 62  
Tenure:



All sizes are approximate. The Agent has not tested any apparatus, equipment, fixtures and fittings, or services and so cannot verify that they are in working order or fit for the purpose. A buyer is advised to obtain verification from their Solicitors or Surveyor. Photographs are for illustration purposes only and may depict items, which are not for sale or included in the sale price. References to tenure of a property are based upon information supplied by the vendor. The agent has not had sight of the title documents, a buyer is advised to obtain verification from their solicitor. Money Laundering Regulations 2003: Intending purchasers will be asked to produce identification, documentation at a later stage and we would ask for your co-operation in order that there will be no delay in agreeing the sale.

These particulars are intended to give a fair description of the property only and are in no way guaranteed, nor do of any contract. They are issued on the express condition that all negotiations are conducted through W.J. Meade Estate Agents. All subject to contract and to being unsold.