

Visit Alternative Available



## Price

£1,000 PCM

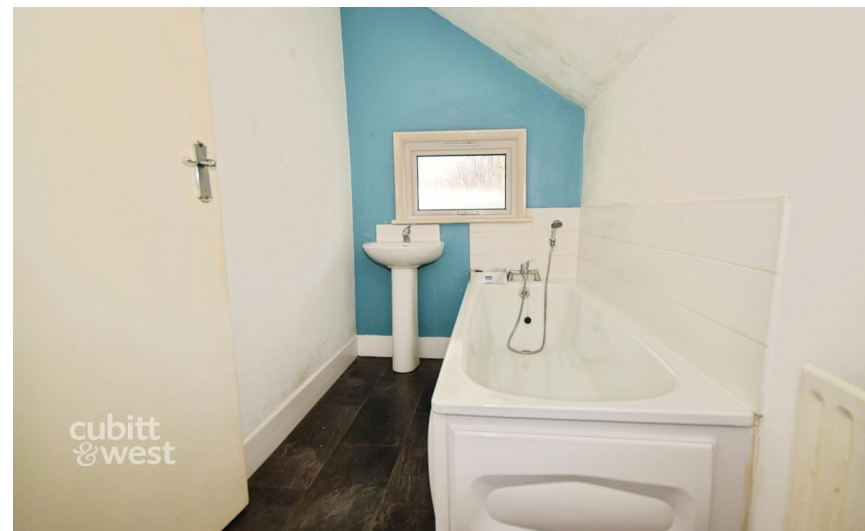
Fees Apply



Available 30/06/26

Aldwick Road Bognor  
Regis PO21

**cubitt & west**  
Helping you move forwards



## Main Features

- Open House Event
- Alternative Deposit Option
- Large Reception Room
- Modern Kitchen
- Shared Garden
- Ideal for working professionals

## Accommodation

- Reception Room 12'2 x 12'0
- Kitchen 8'7 x 5'2
- Bedroom 12'2 x 10'8
- Bathroom 9'8 x 4'7
- Shared Garden



**Deposit required is £1,153.85**  
**Arun District - Council Tax Band Tax Band A**

Renting a property is a big commitment and we recommend that you visit the local authority website and these websites which offer helpful information and advice about letting

[www.gov.uk/government/publications/how-to-rent](http://www.gov.uk/government/publications/how-to-rent)

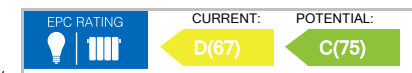
[www.gov.uk/private-renting](http://www.gov.uk/private-renting)

[www.cubittandwest.co.uk/renting/tenancy-fees-individuals/](http://www.cubittandwest.co.uk/renting/tenancy-fees-individuals/)

[www.gov.uk/green-deal-energy-saving-measures](http://www.gov.uk/green-deal-energy-saving-measures)

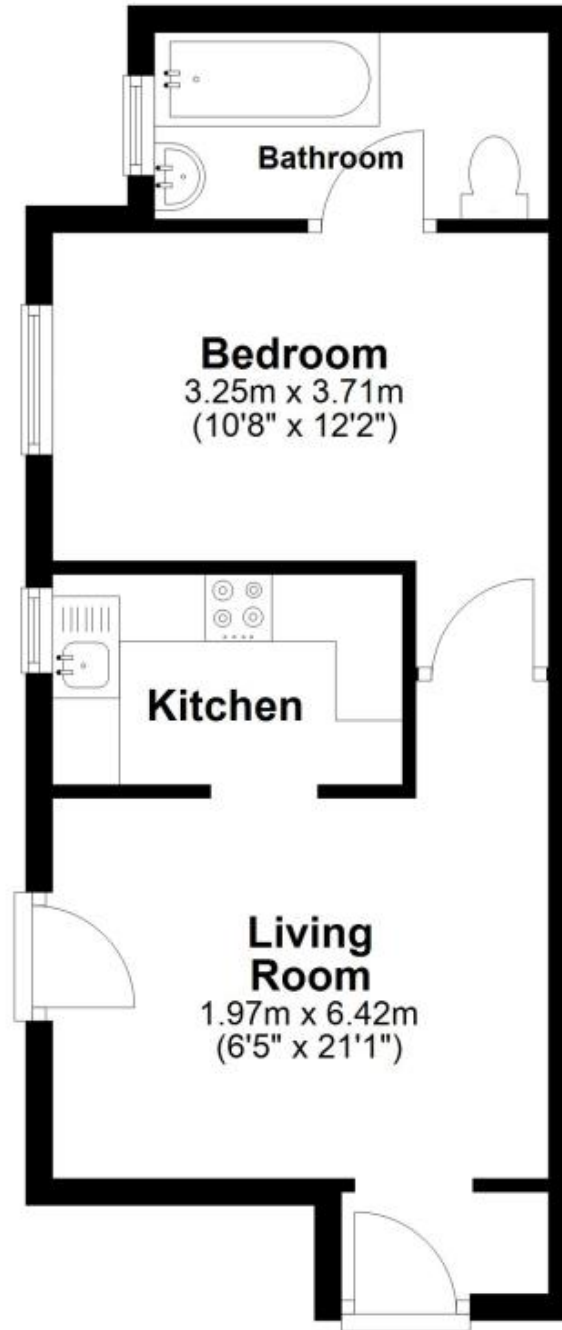
**Call Bognor Regis 01243 860290 ■ [cubittandwest.co.uk](http://cubittandwest.co.uk)**

IMPORTANT INFORMATION: Please contact our Lettings Team who will confirm the total costs involved in renting this property. For clarification, we wish to inform the prospective tenant that we have prepared these details as a general guide. The agent has not carried out a detailed survey nor tested the services, appliances, or specific fittings (unless otherwise stated), and no warranty can be given as to their condition. All room measurements are taken at floor level. We strongly recommend that all the information which we provide about the property is verified by yourself and your advisers. The contents of this publication are © Cubitt & West, 2015. Cubitt & West is a trading name of Arun Estates Limited Registered in England No. 2597969



# Ground Floor

Approx. 37.0 sq. metres (398.5 sq. feet)



Total area: approx. 37.0 sq. metres (398.5 sq. feet)