



41 Stirling Close, Windsor, SL4 4PW  
Offers in excess of £450,000

 **HORLER**



## 41 Stirling Close, Windsor, SL4 4PW

Welcome to this charming three-bedroom semi-detached family home located in the desirable Stirling Close, Windsor. This property is ideally situated close to local amenities, schools, and excellent transport links, making it perfect for families and commuters alike.



### Property Summary

As you enter the home, you are greeted by a welcoming entrance porch that leads into a spacious open-plan living and dining room, providing a wonderful space for family gatherings and entertaining guests. The fitted kitchen boasts a range of eye and base level units, complemented by integral appliances, ensuring that cooking and meal preparation are both convenient and enjoyable. Additionally, the ground floor features a versatile playroom, perfect for children or as a home office, along with a handy downstairs washroom. The integral garage adds further practicality to the home.

Moving to the first floor, you will find two generously sized double bedrooms, both equipped with fitted storage, providing ample space for your belongings. A single bedroom is also present, making this home suitable for families of various sizes. The family bathroom is well-appointed, catering to the needs of the household.

Outside, the property boasts a fully enclosed paved rear garden, offering a private outdoor space for relaxation and play. A large outbuilding provides even more storage options, ensuring that your home remains clutter-free. The front of the property features a lawn and a driveway with off-road parking for two cars, leading directly to the integral garage.

This delightful home in Windsor is a perfect blend of comfort, convenience, and practicality, making it an excellent choice for those seeking a family-friendly environment. Do not miss the opportunity to make this lovely property your own.

### General Information

Council Tax Band 'D'

### Legal Note

\*\*\*Although these particulars are thought to be materially correct their accuracy cannot be guaranteed and they do not form part of any contract\*\*\*

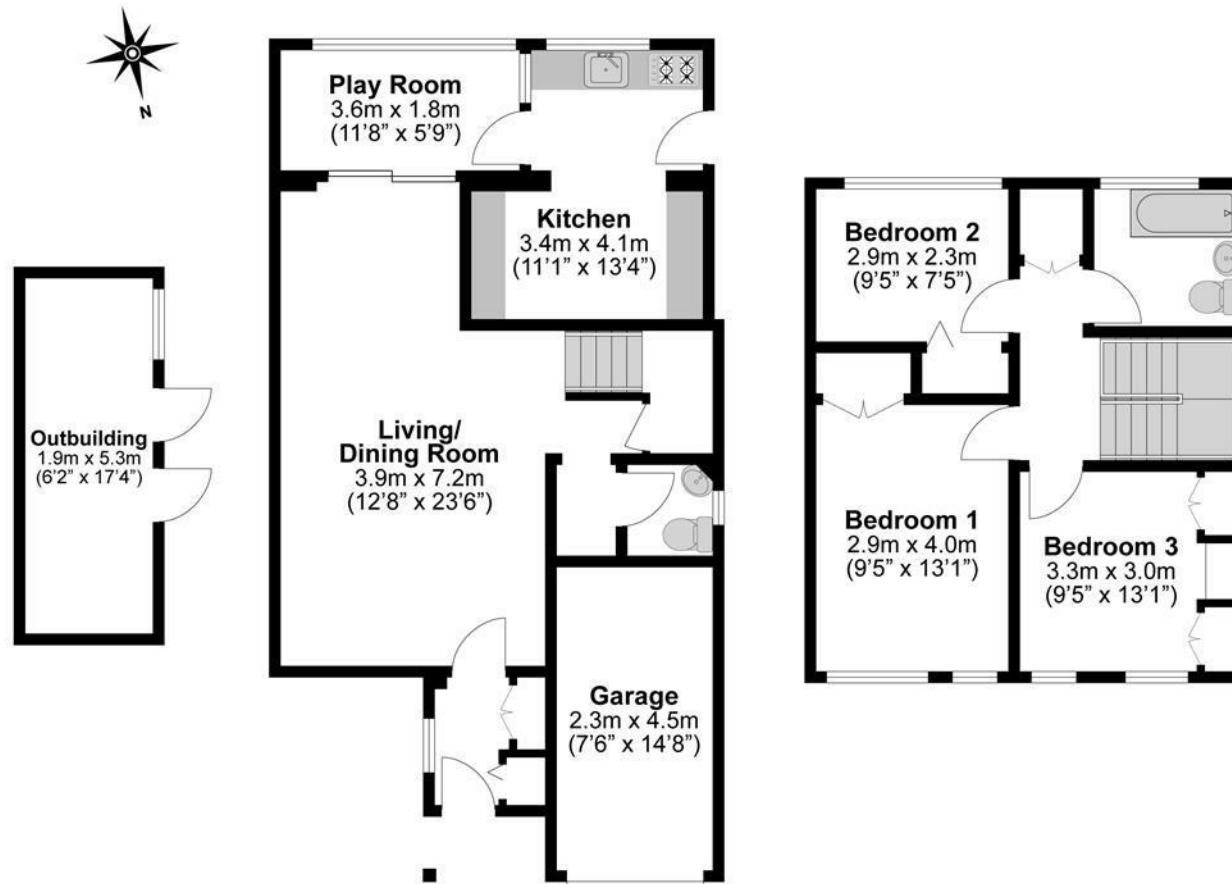












**Illustrations are for identification purposes only,  
measurements are approximate, not to scale.**