



24 Mill Stream Court, Abingdon OX14 5XA

 **Hodsons**
...your move, our passion
Sales | Lettings

24 Mill Stream Court

Wonderful elevated views feature with this larger design of modern one bedroom top floor retirement apartment, forming part of one of the areas most popular retirement developments, suitable for the over 55s, situated within easy walking distance of the thriving town centre's many amenities.

One of the areas most popular retirement developments for the over 55s, Mill Stream Court is situated in a quiet no-through location close to nearby delightful Thames-side walks and Abingdon town centre with its wide range of facilities. Features include large communal living room, washing and drying facilities allocated/visitors parking and attractive communal gardens.

Bedrooms: 1

Bathrooms: 1

Reception Rooms: 1

Council Tax band: C

Tenure: Leasehold

EPC Energy Efficiency Rating: C

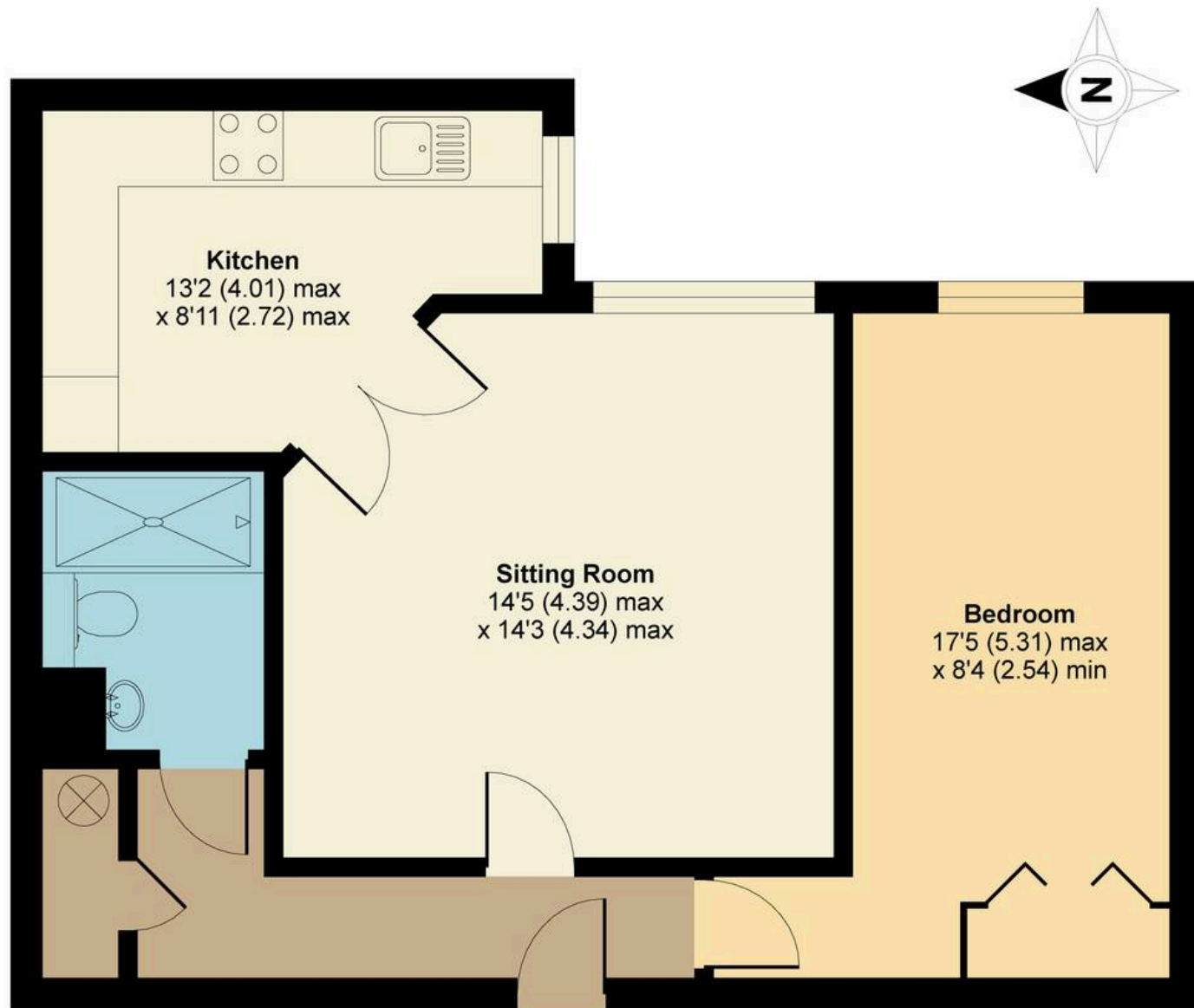




Key Features

- Secure ground floor entrance combined with video door entry system (linked to owners TV) with lift or stairs rising to top floor
- Entrance hall leading to impressive sitting room boasting attractive elevated views over the communal gardens and beyond
- Well-equipped kitchen with integrated appliances
- Large double bedroom complemented by fitted wardrobe cupboards
- Electric storage heating, double-glazed windows and the property is sold with no on-going chain
- Residents lounge, communal laundry, allocated/visitors parking facilities, and large, attractive communal gardens
- Onsite Manager who can be contacted in case of emergency. For periods when the Manager is off duty, there is a 24 hour emergency Appello
- The property is leasehold, the ground rent is approx. (To be confirmed) annually and the service charges are approx. (To be confirmed) annually





SECOND FLOOR

Mill Stream Court, Abingdon, OX14

APPROX. GROSS INTERNAL FLOOR AREA 589 SQ FT 54.7 SQ METRES



Hodsons
...your move, our passion
Sales | Lettings

5 Ock Street, Abingdon,
Oxfordshire, OX14 5AL
T: 01235 553686
E: abingdon@hodsons.co.uk
www.hodsons.co.uk

Whilst every attempt has been made to ensure the accuracy of the floor plan contained here, measurements of doors, windows and rooms are approximate and no responsibility is taken for any error, omission or misstatement. These plans are for representation purposes only as defined by RICS Code of Measuring Practice and should be used as such by any prospective purchaser. Specifically no guarantee is given on the total square footage of the property if quoted on this plan. Any figure given is for initial guidance only and should not be relied on as a basis of valuation.