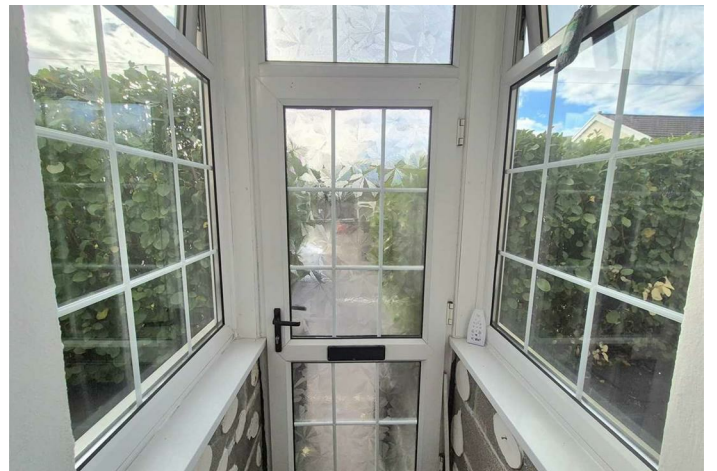


FREEHOLD



House - End Terrace (EPC Rating: D)

19 GELLIARAEL ROAD, PORTH, CF39 8SY

£124,995



# 3 Bedroom House - End Terrace located in Porth

\*\*\*END OF TERRACE\*\*\*THREE BEDROOMS\*\*\*TWO RECEPTION ROOMS\*\*\*OPEN VIEWS\*\*\*

Nestled in the picturesque village of Gilfach Goch, this beautifully presented end-of-terrace traditional stone-built cottage offers the perfect blend of rustic charm and modern living. Situated in the heart of the Rhondda Valleys, the property enjoys unspoiled views to both the front and rear, offering a true sense of peace and countryside tranquillity. Boasting three generous bedrooms, this spacious home is ideal for families or those seeking extra space for guests or a home office. The heart of the home features a modern fitted kitchen with ample storage and workspace, perfect for keen cooks and entertainers alike. Downstairs, you'll find a contemporary shower room for added convenience, while the first floor hosts a stylish family bathroom. The property also benefits from a cozy lounge and an additional sitting room, providing flexible living space to suit your needs. With its characterful stone façade, generous interior, and enviable location, this cottage is a rare find — offering countryside living with easy access to local amenities and transport links.

## Exterior

### Porch

Entrance via a PVCu double glazed front door into a welcoming porch, featuring PVCu windows to both sides. Internal door leads through to the lounge and sitting room

### Lounge

14'0" x 8'9"

Double glazed PVCu window to the front. Walls finished in plain plaster with emulsion paint, complemented by a textured ceiling and central light fitting. Attractive feature fireplace with coordinating hearth and back panel, housing an inset electric fire. Laminate flooring throughout. Includes radiator, multiple power sockets, and a TV point.

### Lounge

Image 2

### Lounge.

Image 3

### Sitting Room

10'2" x 14'1"

PVCu double glazed window to the front. Decorated with plain plastered walls and emulsion finish, complemented by a textured ceiling and central light fitting. Features an open staircase and laminate flooring. Radiator and multiple power points included.

### Sitting Room

Image 2

### Sitting Room.

Image 3

### Kitchen

10'10" x 9'9"

Step into a bright and functional kitchen space with a PVCu double glazed door and window opening out to the rear, inviting natural light and garden views. The room blends style and practicality with a mix of ceramic tile and emulsion-finished plaster décor, topped with a textured ceiling and central lighting. Sleek laminate flooring flows throughout, complementing a fully fitted kitchen equipped with matching wall and base units, durable heat-resistant worktops, and an inset sink with modern mixer taps. Cooking is made easy with a built-in oven, hob, and extractor fan, while a radiator keeps the space warm and comfortable. Convenient access to a shower room and W/C is provided via an internal door, adding to the home's functionality. Power points are thoughtfully positioned for all your kitchen appliances and essentials.

### Kitchen

Image 2

### Kitchen.

Image 3

### Kitchen..

Image 4

## Shower Room

Enjoy a bright and practical shower room featuring a PVCu double glazed window to the side, bringing in natural light while maintaining privacy. The clean, modern décor includes smooth plastered walls with a fresh emulsion finish, complemented by a textured ceiling and sleek inset central lighting. A spacious walk-in shower offers comfort and ease of access, while a radiator ensures warmth year-round. A convenient internal door leads directly to the separate W/C, adding to the room's functionality.

### W/C

A bright and airy space, featuring a PVCu double glazed window to the rear that allows for natural light and ventilation. The room is finished in a clean, neutral style with smooth plastered walls, soft emulsion tones, and a textured ceiling with a central light fitting. Practical and thoughtfully designed, it includes a classic pedestal wash basin and a low-level W/C — ideal for everyday comfort and convenience.

### Bedroom 1

14'4" x 6'10"

A welcoming and comfortable space, filled with natural light from the PVCu double glazed window to the front. The room features a smooth, neutral décor with plain plastered walls, a flat ceiling, and a central light fitting for a bright, airy feel. Soft fitted carpet underfoot adds warmth and comfort, while a radiator keeps the room cosy year-round. Multiple power points provide flexibility for everyday living.

### Bedroom 1

Image 2

### Bedroom 2

14'3" x 11'7"

A light-filled room with a PVCu double glazed window to the front, offering a pleasant outlook and plenty of natural light. Finished in neutral tones with smooth plastered walls and a flat ceiling with a central light fitting, the space feels calm and inviting. Soft fitted carpet adds comfort underfoot, while a radiator ensures warmth. Conveniently placed power points make it ideal for everyday use.

### Bedroom 2

Image 2

### Bedroom 3

9'10" x 9'3"

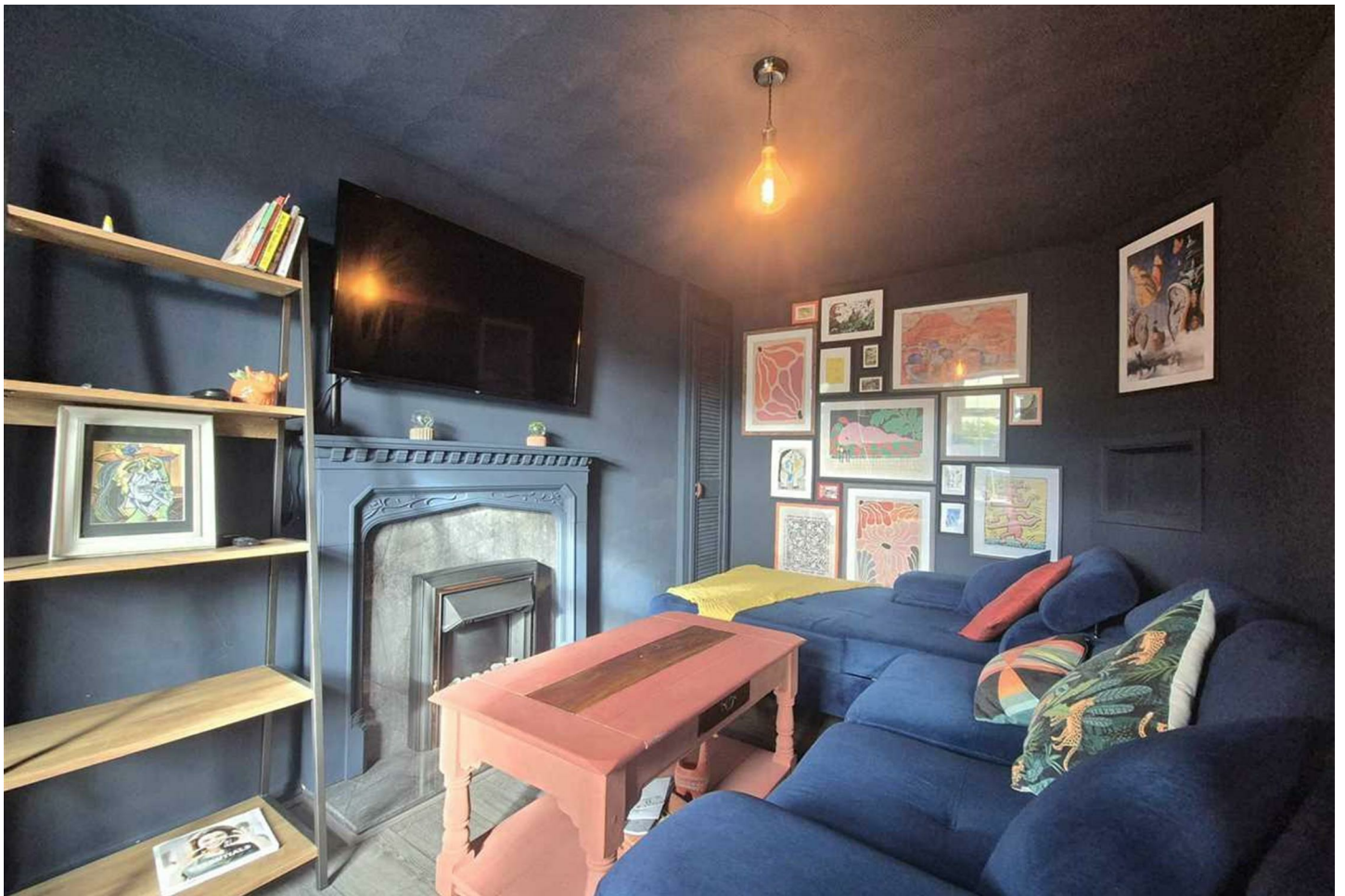
A peaceful and inviting room enjoying beautiful views across the countryside through the rear-facing PVCu double glazed window. Decorated in soft, neutral tones with smooth plastered walls and a flat ceiling featuring a central light fitting, the space feels bright and relaxing. Comfortable fitted carpet underfoot and a radiator provide warmth and cosiness, while conveniently placed power points support modern day-to-day living.

### Bedroom 3

Image 2

### Landing Area

Plain plaster and emulsion decor finished to a textured ceiling with a central light fitting. Fitted carpet. Doors allowing access to three bedrooms and family bathroom.m



**Bathroom**

A bright and fresh bathroom with a rear-facing PVCu double glazed window that fills the space with natural light. The room combines practical ceramic tiling with smooth plaster and emulsion finishes, all set beneath a clean, flat ceiling with central lighting. Relax and unwind in the full suite featuring a bath, pedestal wash hand basin, and low-level W/C. Durable laminate flooring adds a modern touch, while a handy storage cupboard keeps essentials neatly tucked away. A radiator ensures warmth and comfort throughout.

**Bathroom.**

Image 2

**Rear Garden**

Enjoy a fully enclosed rear garden beautifully laid to lawn, perfect for relaxing or entertaining outdoors. A handy garden shed offers extra storage, while side access adds convenience. Take in stunning open views across the countryside, creating a peaceful and private retreat right at home.

**Rear Garden.**

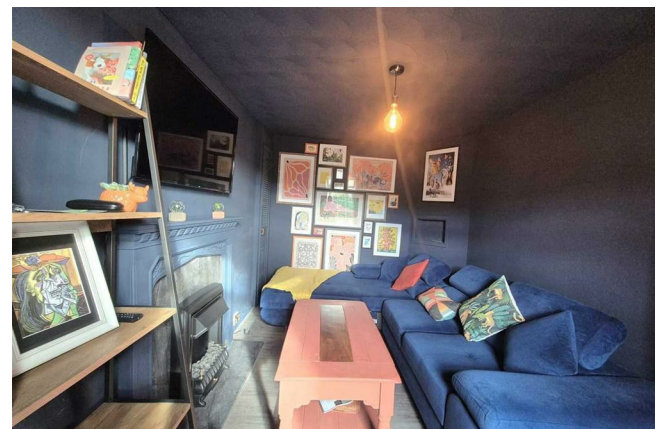
Image 2

**Rear Garden..**

Image 3

**Rear Garden...**

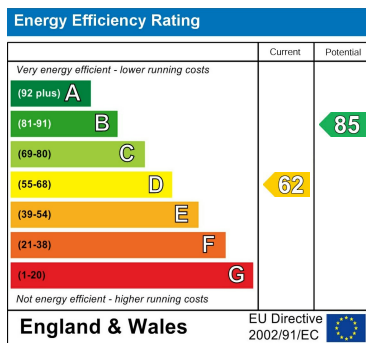
Image 4



Council Tax Band

A

Energy Performance Graph



Call us on

01443 435599

[sales@osborneestates.co.uk](mailto:sales@osborneestates.co.uk)

[osborneestates.co.uk](http://osborneestates.co.uk)

Agents Note: Whilst every care has been taken to prepare these particulars, they are for guidance purposes only. All measurements are approximate and are for general guidance purposes only and whilst every care has been taken to ensure their accuracy, they should not be relied upon and potential buyers are advised to recheck the measurements.

