



6 Burley Close, Streatham, London, SW16 4QQ

Offers in excess of £550,000



**Cromwells**  
ESTATE AGENTS



## 6 Burley Close, Streatham, SW16 4QQ

Nestled away in a sought after no through road is this very well presented, and extended three bedroom house. The property benefits from an 18ft kitchen, a downstairs shower room, three good size bedrooms, a modern bathroom, a detached garage and no onward chain.

The property is ideally located near to both Streatham Vale and Norbury and is a walk or short bus journey from Streatham Common or Norbury Stations with direct access to central London via Clapham junction, London Bridge and London Victoria. Woodmansterne school and sixth form is a short walk away as are the shops, bars and restaurants local to Streatham Vale and Norbury.

### Accommodation

Obscure UPVC double glazed door to

### Spacious entrance hall

Double panel radiator, wall mounted thermostat, under stairs storage cupboard.

### Dining room

UPVC double glazed leaded light bay window to front aspect, double panel radiator.

### Lounge

Double glazed sliding doors to rear aspect, oak flooring, single panel radiator.

### Kitchen

Range of fitted wooden wall units with matching cupboards and drawers below, granite effect roll top work surfaces with inlaid stainless steel sink and chrome mixer tap, space for cooker with extractor fan above, space and plumbing for washing machine and dishwasher, space for tall standing fridge freezer, breakfast bar, tiled splash back, double panel radiator, extractor fan, UPVC double glazed door to rear aspect.

### Downstairs wet room

Consisting of tiled cubicle with thermostatic power shower and floor drainer, wash hand basin with chrome mixer tap, low level pushbutton flush WC, double panel radiator, part tiled walls, obscure UPVC double glazed windows to side and rear aspects, extractor fan.

### Stairs to 1st floor landing

Loft access with pulldown loft ladder.

### Bedroom one

UPVC double glazed leaded light window to front aspect, double panel radiator, oak flooring.

### Bedroom two

UPVC double glazed window to rear aspect, single panel radiator, cupboard housing “Worcester” boiler

### Bedroom three

UPVC double glazed leaded light window to front aspect, single panel radiator, oak flooring, fitted shelving and wardrobe space

### Bathroom

Luxury modern suite comprising panel enclosed bathroom with chrome mixer tap and thermostatic shower with hand attachment, wash hand basin with chrome mixer tap and storage cupboards below, low level pushbutton and flush WC, heated chrome towel, two obscure UPVC double glazed windows to rear aspect, extractor fan, tiled flooring, tiled walls.

### Rear garden— approximately 75ft (West facing)

Large paved patio area leading to lawn section with flowerbeds side, fence enclosed, outside tap, gated rear access with hardstanding for off street parking.

### Detached garage

Up/over door at front

### BUYER'S INFORMATION

Under UK law, estate agents are legally required to conduct Anti-Money Laundering (AML) checks on buyers and sellers to comply with regulations. These checks are mandatory, and estate agents can face penalties if they fail to perform them. We use the services of a third party to help conduct these checks thoroughly. As such there is a charge of £36 including vat, per person. Please note, we are unable to issue a memorandum of sale until these checks are complete.



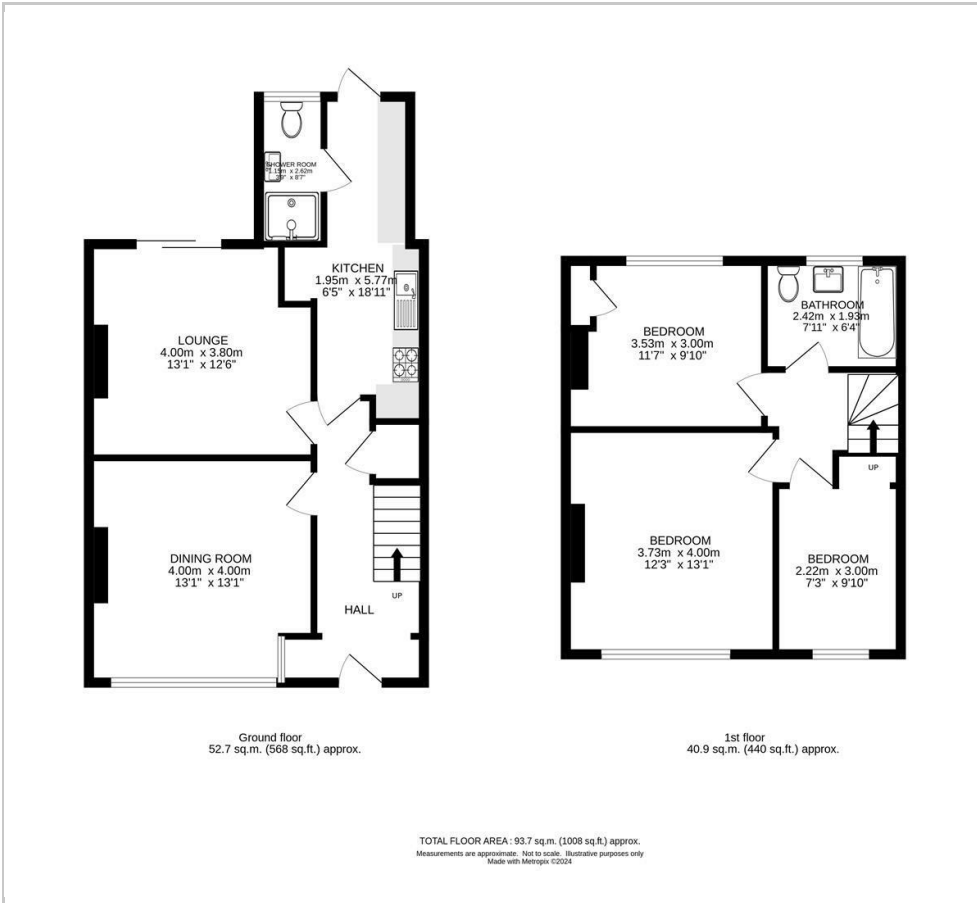




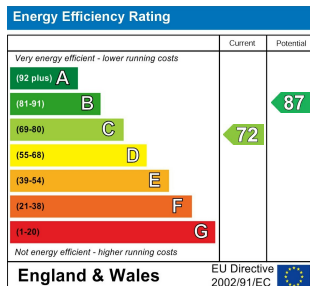




## Floor Plan



## Additional Information



### Viewing

Please contact our Cromwells Office on 0208 647 4422 if you wish to arrange a viewing appointment for this property or require further information.

The information provided within these property details has been supplied by the vendor and is intended as a general guide only. Whilst we make every effort to ensure accuracy, we cannot guarantee the completeness or correctness of the information, including but not limited to boundaries, services, installations, or dates of works such as boiler installation. All prospective purchasers should satisfy themselves by inspection, survey, and/or independent enquiries. This information does not form part of any offer or contract, and no reliance should be placed upon it as statements of fact.

These particulars, whilst believed to be accurate are set out as a general outline only for guidance and do not constitute any part of an offer or contract. Intending purchasers should not rely on them as statements of representation of fact, but must satisfy themselves by inspection or otherwise as to their accuracy. No person in this firm's employment has the authority to make or give any representation or warranty in respect of the property.