

JOSE BAILAO



Hythe End Road

Wraysbury

Berkshire, TW19

4 Bedrooms | 2 Bathrooms | 3 Reception Rooms

Guide Price

£850,000



At a Glance

Riverside waterway properties rarely come to market in Wraysbury, and when they do, the combination of a private mooring, electric gates, and room for the whole extended family at once is rarer still. Thames Creek is one of those properties.

Set on Hythe End Road, one of the area's most established residential addresses, this four-bedroom detached home spans approximately 2,329 sq ft across two well-planned floors. From the moment the gates open, the scale of the plot is evident: a broad driveway in block paving and gravel, a double integral garage with workshop, and a south-westerly garden that runs all the way to the water's edge.

Spacious, flexible, and genuinely peaceful, this home suits those ready for a slower pace without sacrificing any of the practical convenience that comes with two decades of thoughtful family living.

Key Features

- 45 ft of Thames-connected waterway frontage with private mooring
- Four-bedroom detached home, approx 2,329 sq ft
- Three reception rooms
- Principal bedroom with en-suite facilities
- South-westerly garden with raised timber deck
- Secure electric remote-controlled gates
- Extensive driveway parking for numerous vehicles
- Double integral garage with workshop
- South Western Railway to London Waterloo
- Easy access to M25 (J13) and Heathrow



Ground Floor Living

The entrance hall opens onto a well-proportioned layout suited to both everyday flow and larger gatherings. The dining room connects naturally between the kitchen and the main living space.

The kitchen is fitted with classic cabinetry and dark granite worktops, with tiled flooring, a Bosch double oven, gas hob, and leaded-light windows to the front. The living room is the standout interior space. Generously proportioned and flooded with afternoon light, it opens onto the riverside deck through full-width sliding patio doors. A decorative arched alcove with pillar detailing adds a period character note to an otherwise calm, neutral room.

The study offers real flexibility as a dedicated home office, a third reception room, or a quiet space entirely separate from the main living areas.





First Floor

Four well-proportioned bedrooms are arranged across the first floor. The principal owner's suite is the largest room in the house and benefits from en-suite facilities.

Three further double bedrooms and a family bathroom complete the accommodation. The layout suits multi-generational living with ease, offering the flexibility to accommodate extended family, or an elderly relative without any sense of compromise.

The property also presents the potential for and extension or annexe facilities, subject to the relevant local authority approvals and planning permissions, making it even more versatile for the next owners.





The Waterway, Garden & Setting

Step out from the living room and the full appeal of Thames Creek comes into focus.

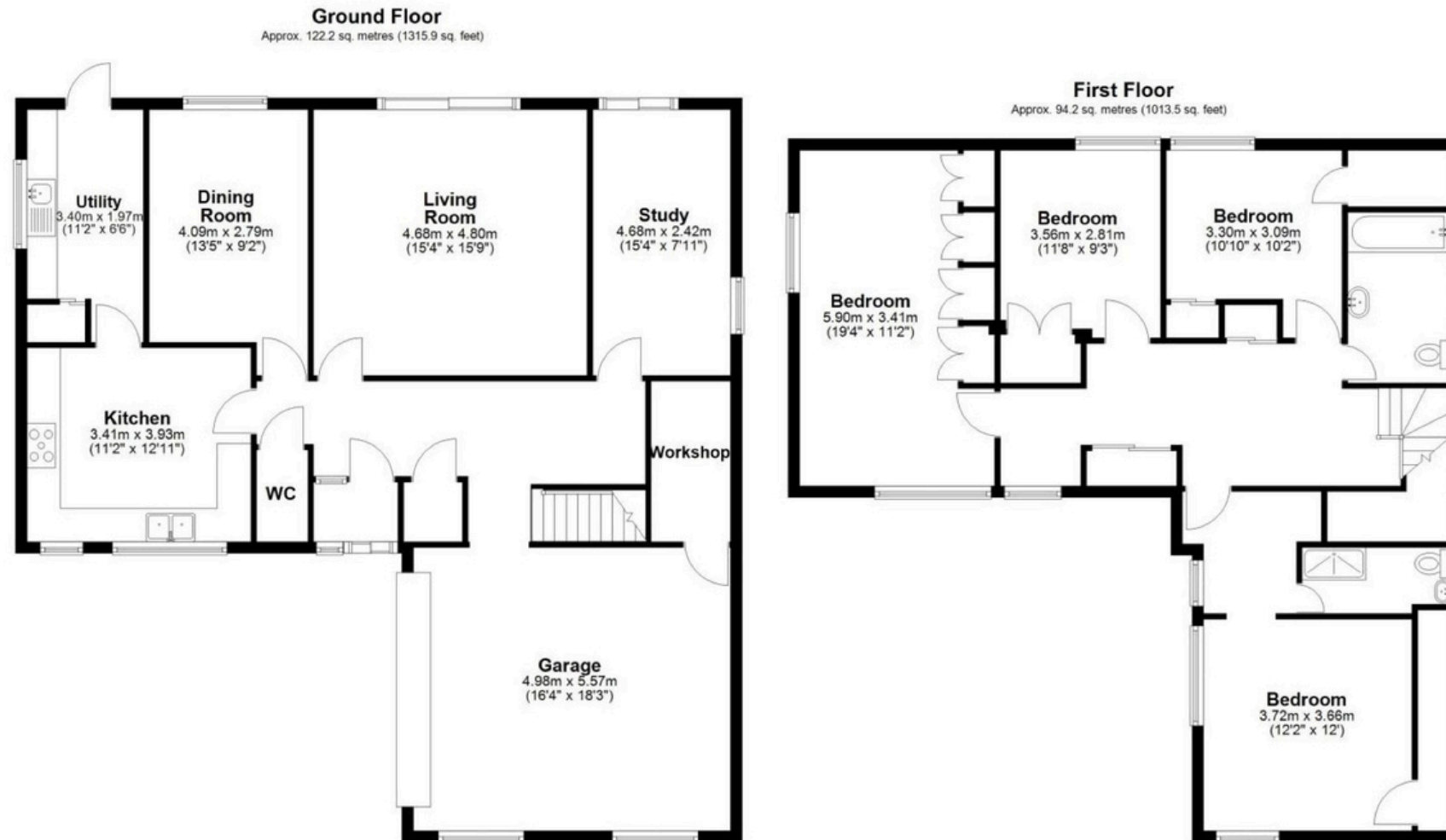
A raised timber deck, furnished for outdoor dining, overlooks the south-westerly garden and the waterway beyond. Below the deck, a well-maintained lawn runs to the private mooring, where kayaks, dinghies, and long summer evenings all have a place. Wildlife varies by season. Swans nest nearby. The quiet does not change.

At the end of Hythe End Road, Ankerwycke National Trust land opens onto riverside meadows and ancient woodland with almost no foot traffic. It is the kind of amenity that, once you have it on your doorstep, becomes part of the rhythm of the week.





Floorplans



Total area: approx. 216.4 sq. metres (2329.3 sq. feet)

Specifications

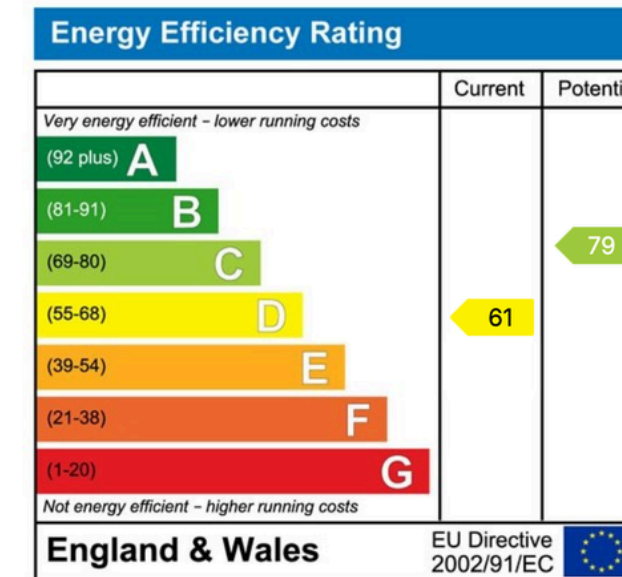
Approximate internal area: 2,329 sq ft

Tenure: Freehold

Council Tax: Band G

Local Authority: Royal Borough of Windsor and Maidenhead

EPC: Rating D



Setting & Location

Hythe End Road has a character that does not appear on property portals. It is a close-knit address with an active residents' community, regular neighbourhood events, and the kind of familiarity that comes from people choosing to stay. New owners are welcomed into something that already exists.

Wraysbury station provides direct South Western Railway services to London Waterloo, making the property a practical choice for those who still want easy access to the city. The M25 (junction 13) is within a few minutes by car, placing Heathrow Airport and the wider motorway network within straightforward reach. Windsor, Staines, and Egham are all within a short drive.



Viewings and Contact Information

Thames Creek doesn't ask you to imagine what life here might look like. The swans on the water, the deck in late afternoon sun, the walk to Ankerwycke on a quiet morning — it shows you. Properties like this change hands rarely, and for good reason. When you find a home that fits both who you are now and who you intend to become, you hold onto it. I hope Thames Creek might be that home for you.

Quote reference **JD0696** for all enquiries



Jose Bailao

M: [+44 \(0\) 7737 059 052](tel:+44207737059052)

E: Jose.Bailao@expuk.com

W: josebailao.exp.uk.com

